



FOUR SEASONS  
RESORT AND RESIDENCES  
WHISTLER

# SPRING

## *RESORT GUIDE*





# SPRING IS IN *FULL* *BLOOM*

Discover the best of alpine living, where an idyllic scenery and a revitalizing atmosphere await your exploration. From hiking trails to poolside bliss, allow us to plan every detail, ensuring your stay feels as refreshing as the first day of spring.

This season offers the perfect opportunity to recharge, reconnect, and rejuvenate with crafted experiences amidst the Coast Mountains.



# DINING *AT THE RESORT*

## BRAIDWOOD TAVERN

***Breakfast-Lunch-Après-Dinner***  
***Open daily from 7:00am to 11:00pm***

Braidwood Tavern is a vibrant yet inviting retreat, inspired by the warmth of a mountain lodge and the spirit of a modern tavern. Celebrating the finest seafood and seasonal ingredients of the Pacific Northwest, the menu offers expertly prepared dishes for breakfast, lunch and dinner, complemented by a curated selection of wine and signature cocktails.

Spring Prix Fixe menu available daily from 5:30pm to 9:30pm starting April 6th.



## SIDECUT STEAKHOUSE

*Please note SIDECUT will be closed for enhancements from April 20th to May 5th.*

***Open daily from 6:00pm to 9:30pm***  
***Reservations highly recommended.***

SIDECUT presents an evening of refined steakhouse classics, from the Signature Seafood Tower drawn from crisp Pacific waters to Canadian prime, hand-cut steaks led by the Long Bone Dry-Aged Beef Ribeye, complemented by classic sides and inspired culinary creations.

Spring Prix Fixe menu available daily starting May 6th, with the exception of holidays and long weekends.



BRAIDWOOD  
TAVERN

\$59 *PRIX*  
*FIXE* MENU

Available daily from 5:30pm - 9:30pm  
at Braidwood Tavern



# *THE MEMOIR* COCKTAIL COLLECTION

The Memoir is an immersive, story-driven cocktail experience inspired by the emotions and milestones of a life well lived. Each chapter is brought to life through thoughtfully crafted cocktails and zero-proof cocktails, guiding guests through a multi-sensory journey from childhood wonder and youthful freedom to reflection and renewal.

*Available at Braidwood Tavern*

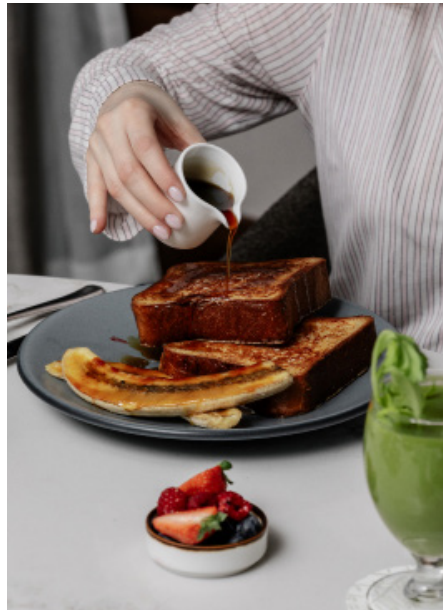


# IN-ROOM *INDULGENCE*

Blending the warmth of home with familial favourites from around the world, our new in-room dining menu delivers a dining experience unique to Whistler. Designed for relaxed dining in the privacy of your room, the menu offers comforting classics thoughtfully prepared by our culinary team. From vibrant breakfasts to late-night indulgences, each dish has been carefully selected to bring you the best.

## IN-ROOM DINING

*All Day Dining | Available 24 hours*



## COURTYARD NOTICE

Our beloved vintage camper and s'mores experience will be taking a seasonal pause during spring due to increased bear activity. As stewards of nature, we prioritize the safety of our guests and the well-being of local wildlife. We appreciate your understanding.

# INCLUDED

# RESORT ACTIVITIES

## DAILY ACTIVITIES

---

### COFFEE STATION

*Lobby level | Daily from 5:00am to 9:00am*

Enjoy a complimentary coffee from our coffee station located next to Front Desk.

### E-BIKES

*Available as of May 1st | Weather-dependent*

*Daily at 10:00am; 11:30am; 1:00pm, 2:30pm; and 4:00pm*

E-bikes are available complimentary for a one-hour rental.

Please register with our Concierge Team as this activity has limited availability.

Kindly note passengers and riders must be at least 16 years of age for this activity.

### SEASONAL ICED TEA/LEMONADE

*Lobby Level | Daily from 3:00pm to 5:00pm*

Unwind after an adventurous day with a refreshing beverage.

### WINE RECEPTION

*Lower Lobby | Daily from 4:00pm to 5:00pm*

Join us for our complimentary wine reception, featuring British Columbia's varietals of red and white wines.

### MAPLE TAFFY

*Lower Lobby | Available Wednesday to Sunday from 4:00pm to 5:00pm*

Experience a quintessential Canadian experience as we bring this timeless tradition to life right before your eyes.

### FITNESS CLASSES

*Fitness Centre - Movement Studio*

Yoga, Pilates, Spin and Bootcamp - please refer to weekly class schedule at Concierge or The Spa for dates and times.

### SQUAMISH LILWAT CULTURAL CENTRE GUIDED TOURS

*Daily at 10:00am and 3:00pm*

Learn more about the two First Nations communities that lived in the Whistler area. Please collect your tickets at the Concierge desk for this activity.

# WEEKLY ACTIVITIES

---

## SEA-TO-SKY CRAFT BEER TASTING

**Braidwood Bar | Available Monday, Tuesday, and Saturday at 3:00pm | Ages 19+**

Experience our local craft beers, featuring a rotating selection of breweries from the Sea to Sky Corridor.

*Please register with our Concierge Team as there is limited availability.*

## CANDLE MAKING CLASS

**Chef's Table | Available Wednesday and Friday from 2:00pm to 3:00pm | Ages 12+**

Discover the art of candle making in this hands-on class, where you will design and pour your own custom candle, perfect as a keepsake or gift.

*Please register with our Concierge Team as there is limited availability*

## MAKE YOUR OWN SPA SCRUB

**Chef's Table | Available Thursday and Sunday at 2:00pm | Ages 12 +**

Craft your own spa scrub using locally sourced botanicals and ingredients, guided by our spa experts. This hands-on wellness experience is rooted in nature and tradition, designed to leave your skin glowing and your senses grounded.

*Please register with our Concierge Team as there is limited availability*

## PAINT & SIP

**Chef's Table | Available Sunday from 4:00pm to 6:00pm | Ages 19+**

Unleash your inner artist with our paint and sip experience. Enjoy a glass of wine as you bring a Whistler landscape to life on canvas, guided step by step by one of our talented local instructors. Kindly note guests under 19 are welcome to participate when accompanied by a parent or guardian.

*Please register with our Concierge Team as there is limited availability*

## WHISTLER CUBS

**Available Friday, Saturday, and Sunday from 10:00am to 11:00am and 12:00pm to 1:00pm**

Designed for curious young guests, Whistler Cubs features guided games and hands-on crafts for children ages 5–12. Kindly note children under 5 are welcome when accompanied by a parent or guardian.

*Please register with our Concierge Team as there is limited availability and reservations are highly recommended.*

# RESTORE YOUR *RHYTHM*

## THE SPA

***Open daily from 8:00am to 9:00pm***

Unwind and reconnect in a space shaped by the calming rhythm of the mountains. Inspired by the land and the rich stories that define this region, The Spa offers an experience rooted in balance and renewal.

## THE ULTIMATE RETURN

Thoughtfully paced and deeply personalized, The Ultimate Return invites you to slow down and realign your body. Begin with a tailored massage using intentional techniques and aromatic oils, followed by a customized facial, relaxing manicure and pedicure, then a quiet finish in the Ursa Lounge with guided meditation and warm botanical tea.

## MAGIC OF THE MOUNTAINS

Designed with Skwálwen Botanicals, this experience blends wildcrafted ingredients with expert technique. A rose scrub, usnea wrap, facial massage, botanical massage and grounding pedicure lead to a calming finish in the Ursa Lounge with wild tea and delicate bites.

## RESTORE THE RHYTHM

Designed to restore balance after travel or adventure, this treatment begins with an extended massage to ease tension and boost circulation. A soothing scalp massage, hydrating mask and peppermint foot massage follow. Finish in the Ursa Lounge with guided meditation and warm botanical tea.

## FOUR SEASONS POOL AND WHIRPOOLS

***Open daily from 7:30am to 10:00pm***

Take in pine views from the free-form outdoor pool or soak in one of three hot spring-style whirlpools.

## FITNESS CENTRE

***Open daily | 24 hours***

Featuring new state-of-the-art equipment, including the Onyx Collection by Matrix Fitness, offering premium cardio, strength training, and functional fitness tools for a balanced workout experience. Fitness classes available daily.

Following your treatment, settle into the tranquility of the Ursa Lounge, a sanctuary created for reflection and quiet renewal. Gentle lighting, natural textures and the soothing glow of the Ursa Major constellation invite you to settle in as your body integrates the benefits of your journey.



# TRANSPORTATION



## SHUTTLE SERVICE

A complimentary shuttle service between the Resort, Private Residences and Whistler Village provides easy access to restaurants and shopping around Whistler.

### FRIDAY

**Available 3:30pm to 10:45pm**

Shuttle Route: Resort > Residences > Sundial Hotel > Delta Hotel > Summit Lodge

### SATURDAY

**Available 7:00am to 5:00pm**

Shuttle Route: Resort > Residences > Blackcomb Day Lodge > Sundial Hotel

**Available 5:00pm to 10:45pm**

Shuttle Route: Resort > Residences > Sundial Hotel > Delta Hotel > Summit Lodge

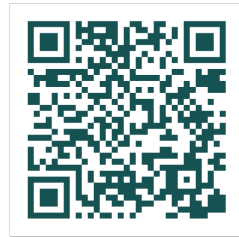
### SUNDAY

**Available 8:00AM to 4:00PM**

Shuttle Route: Resort > Residences > Blackcomb Day Lodge > Sundial Hotel

## LIVE SHUTTLE INFORMATION

Scan the QR code to view shuttle route and track shuttle location.



## HOUSE CAR SERVICE

SCAN FOR SHUTTLE INFO

***Available daily from 10:00am to 10:00pm***

The Resort offers a fleet of spacious luxurious SUV for individual transportation. Service is on a first come first serve basis, cannot be reserved in advanced and is subject to boundaries.

Please see our team on the driveway for transport assistance to destinations outside of the main village.

## EV CHARGING

Charge your electric vehicle with connectors offering up to 16kW. Please note a one-time fee of \$10 applies. Available upon request.

# RECOMMENDED *SPRING ADVENTURES*



## BEAR VIEWING

Experience pristine views surrounding you as you are guided through old growth forest to visit active bear dens, day beds and feeding sites. You may also experience the Olympic Park in the Callaghan Valley known to be home to most of Whistlers black bears.

*Tentative start date May 5th | Weather-dependent*

## WHISTLER BIKING

Stretching 40 km through Whistler's valley, the Valley Trail connects all neighbourhoods with a paved, accessible and scenic path that is perfect for biking and sightseeing. With five alpine lakes and numerous parks all within pedalling distance of the Village, the Valley Trail provides days of entertainment and allows you to pedal, paddle and picnic all spring long.

## HIKING

Hike through giant Douglas firs and enjoy the calm of ancient cedar groves. Visit a land of glaciers, lakes, and snow-capped mountains with an experienced mountain guide or just go for a casual stroll starting here at the Resort.

*Consult our Concierge team for suggestions on self-guided or guided hiking tours. There are opportunities for people of every age and activity level (subject to weather conditions).*

## SPRING SKIING AND SNOWBOARDING

Whistler Mountain will be open until April 19th this year and Blackcomb Mountain will be open until May 18th. Enjoy the warm weather while exploring Whistler and Blackcomb.

*Dates are subject to change pending weather and conditions.*

## CANADIAN WILDERNESS ADVENTURES

From ATV, off road buggy, Jeep 4X4, canoe and e-bike tours, Canadian Wilderness has just the Whistler adventure for you. Please reach out to our Concierge Team for a tailored adventure itinerary.

## MORE ACTIVITIES

Ziplining | Fishing | Vallea Lumina

Please see our Concierge Team for more details and to reserve your tour.

*\*Activities are weather dependant and may only be available throughout certain periods. Please contact our Concierge Team to verify availability.*

# ART & CULTURE

## SQUAMISH LIL'WAT CULTURAL CENTRE

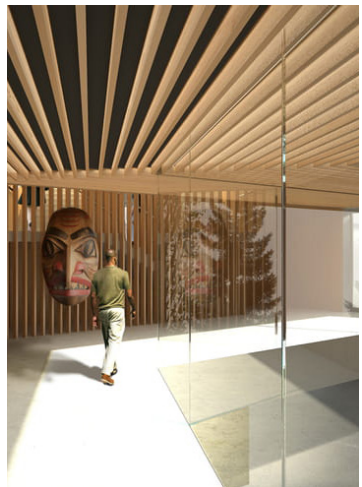
Dedicated to the history and culture of local First Nations, the Squamish Lil'wat Cultural Centre celebrates the joint history of the Squamish and Lil'wat First Nations, past and present, by showcasing their histories, creative works and cultures in an interactive format.

## AUDAIN ART MUSEUM

Created by Vancouver philanthropist, developer and art collector, Michael Audain, the museum showcases an incredible collection of British Columbian art as well as rotating international exhibits.

## WHISTLER CONTEMPORARY ART GALLERY

A refined selection of original paintings, multi-media work, glass and sculpture.





## MEET MARSHMALLOW

The bear whose heartwarming tale of adventure and sweet dreams has captured the imagination of many. From his home in the forest near the Four Seasons Resort Whistler, Marshmallow embarked on a journey filled with wonder. Now, you can bring home Marshmallow and keep the spirit alive! A portion of each purchase supports B.C. Children's Hospital.



---

## CHAT WITH US THROUGH *THE FOUR SEASONS APP*

- Make and manage reservations.
- Wait-free check-in and check-out.
- In-Room Dining
- Easily book restaurant and spa reservations.
- Extra pillows, forgot-to-pack toiletries, and turndown services when you want them.



---

## DOWNLOAD *PRESSREADER*

1. Connect to our Wi-Fi network.
2. Download the PressReader app from your app store or scan the QR code.
3. Launch PressReader, pick your title and enjoy reading!

