

THE SUITE COLLECTION

ELEVATE YOUR LAS VEGAS EXPERIENCE ▶



FOUR SEASONS
HOTEL
LAS VEGAS



EXPERIENCE

LAS VEGAS

WITH FOUR SEASONS COMFORT AND STYLE

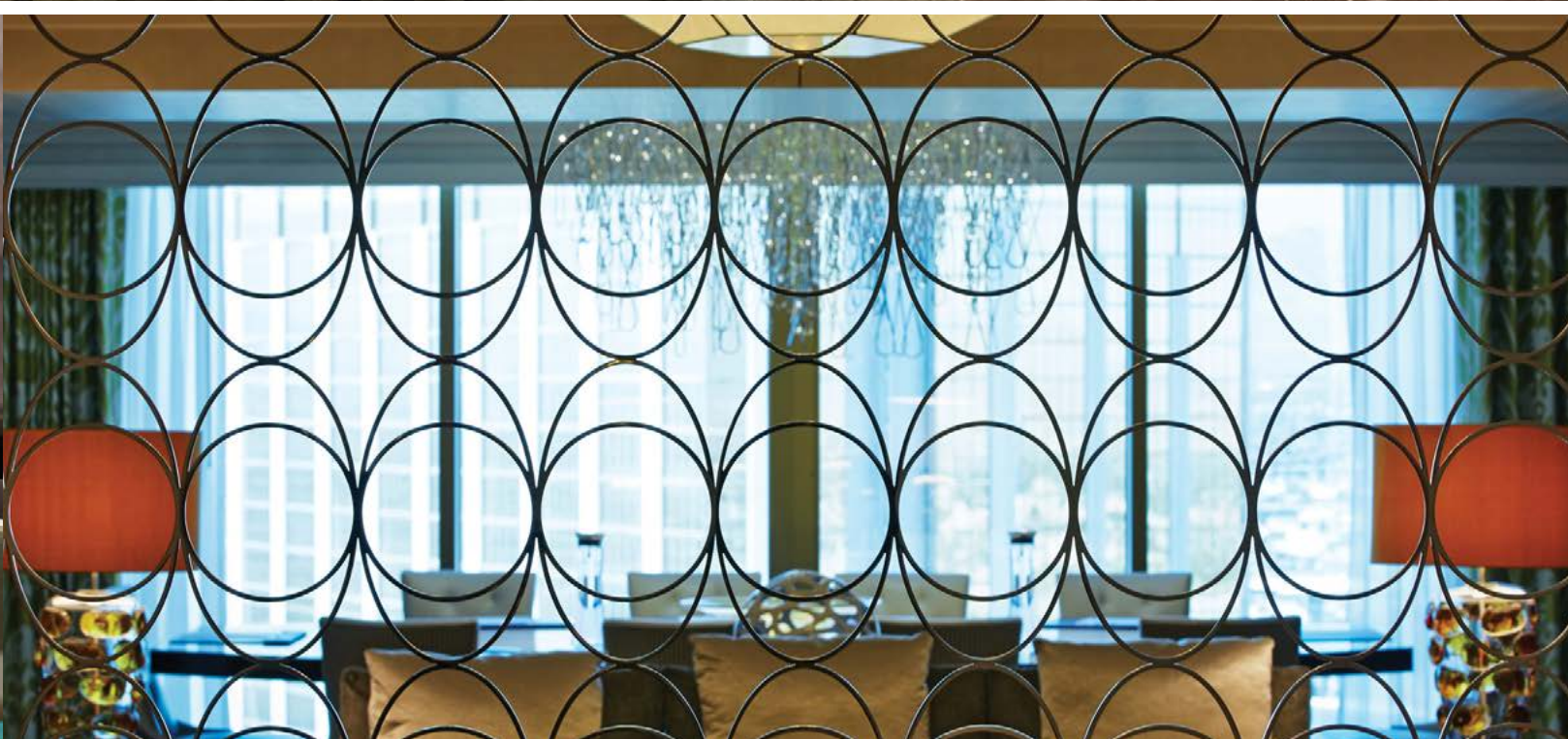
Elevate your stay at Four Seasons Hotel Las Vegas with our collection of 81 sophisticated suites – many with postcard views of the world-famous Las Vegas Strip. Positioned on the 35th to 39th floors of the Mandalay Bay Resort, these stylish one- to three-bedroom accommodations provide added space and privacy for luxurious relaxation, entertaining or business meetings. Legendary Four Seasons service places them in a category all their own.

DISCOVER OUR ACCOMMODATIONS ▶



THE GLAMOROUS
PENTHOUSE SUITES

DISCOVER MORE ▶



PENTHOUSE SUITES

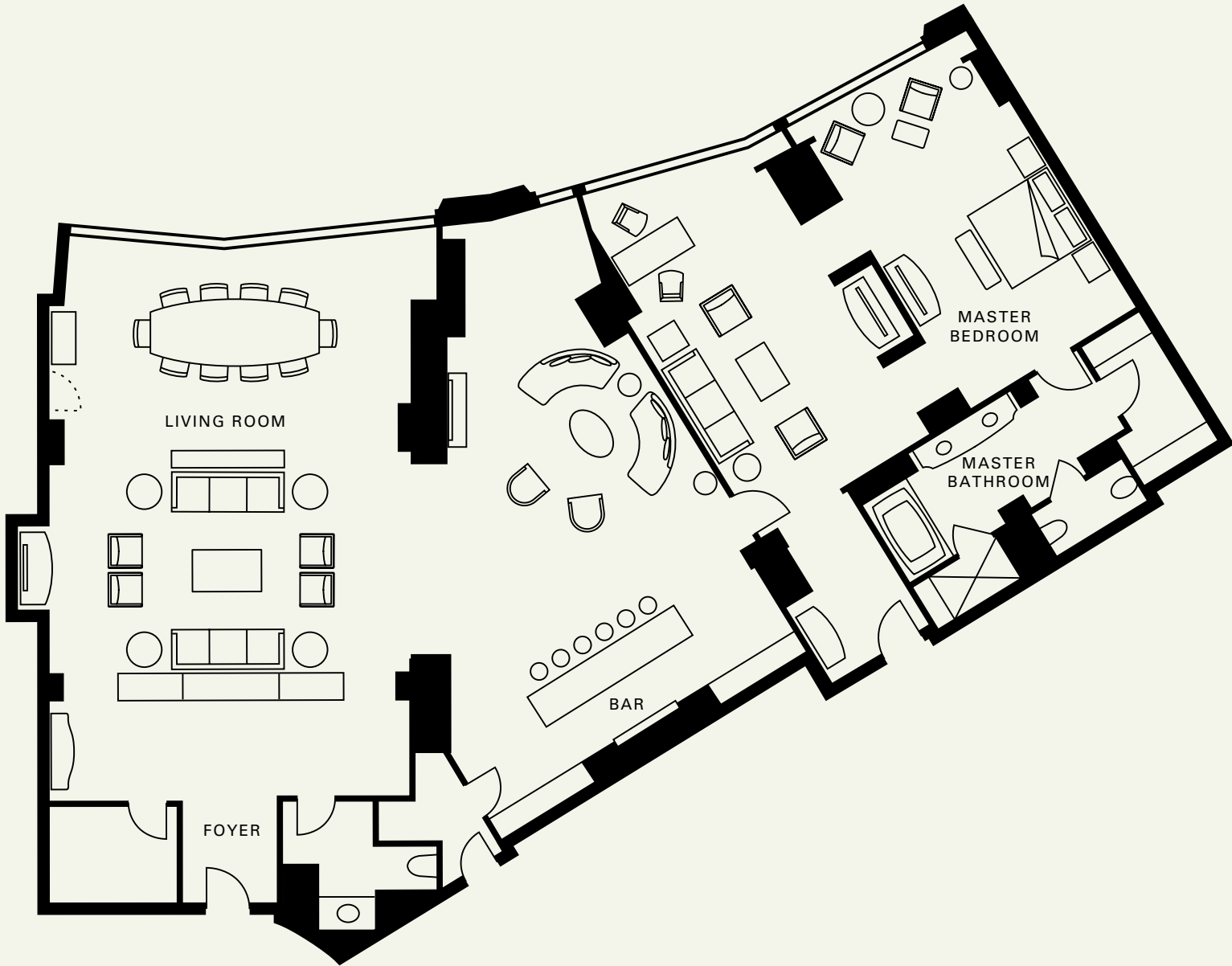
Perched on the 38th and 39th floors, the sprawling Penthouse Suites offer 3,400 sq. ft. (1,036 m²) of sophisticated accommodations. The suites feature sleek interior design accented by natural light from the floor-to-ceiling windows and views of the iconic Las Vegas Strip, Allegiant Stadium and Las Vegas Valley.

The suite’s foyer draws you in to the sprawling living room space complete with inviting vignette seating, while the living room features a boardroom table for up to 8 guests. Adjacent this gathering space is the guest facing bar all accented by the suite’s unparalleled views of the glittering lights below. The master bedroom which features a large sitting area and marble bath are a blissful private escape perfect for work and relaxation.

- [VIEW FLOOR PLAN ▶](#)
- [COMPARISON CHART ▶](#)
- [SUITE AMENITIES ▶](#)
- [MORE INFORMATION ON FOURSEASONS.COM](#)
- [RATES AND AVAILABILITY ▶](#)

PENTHOUSE SUITES

SIZE	<ul style="list-style-type: none">• One-bedroom: 3,400 sq. ft. (316 m²)• Two-bedroom: 3,900 sq. ft. (362 m²)• Three-bedroom: 4,400 sq. ft. (409 m²)
NUMBER OF SUITES	2
LOCATION	38th and 39th floors
VIEW	Allegiant Stadium, mountain and sunset views
OCCUPANCY	<ul style="list-style-type: none">• One-bedroom: 4 adults or 2 adults and 2 children• Two-bedroom: 6 adults or 4 adults and 2 children• Three-bedroom: 10 adults or 6 adults and 4 children
BEDS	<ul style="list-style-type: none">• One-bedroom: One king bed, one sofa bed• Two-bedroom: Two king beds, one sofa bed• Three-bedroom: Three king beds, one sofa bed
BATHROOMS	<ul style="list-style-type: none">• Up to three full marble bathrooms with deep soaking tub, separate glass-enclosed shower, and a mirror with integrated television (master bathroom only)• Guest powder room
LIVING/DINING AREA	<ul style="list-style-type: none">• Expanded living room, including a 55-inch (140-centimetre) flat-screen LED television with 60 high-definition channels, a media hub and an upgraded electronics package• Separate dining room, seating eight• Generously proportioned desk and ergonomic task chair
MASTER BEDROOM	<ul style="list-style-type: none">• Floor-to-ceiling windows with stunning panoramic views• Walk-in closet with bench for seating• 75-inch (191-centimetre) flat-screen LED television• Deluxe coffee and tea making machines



◀ BACK TO SUITE DESCRIPTION



THE ICONIC

STRIP VIEW PRESIDENTIAL SUITES

DISCOVER MORE ▶



STRIP VIEW PRESIDENTIAL SUITES

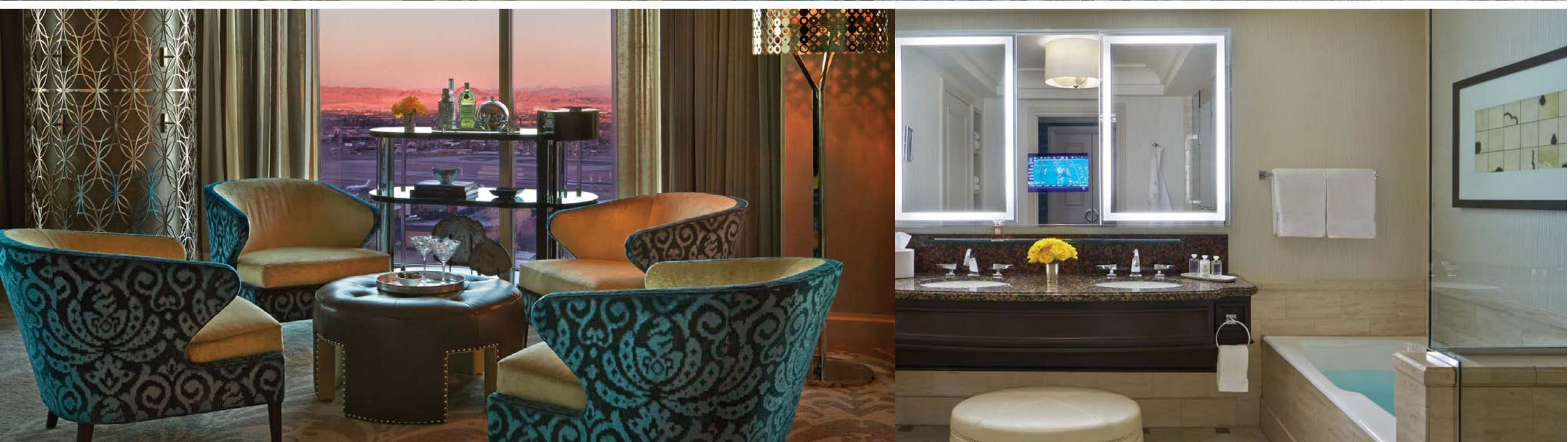
The ultimate in Las Vegas prestige – ideal for business entertaining or personal indulgence – our one-bedroom Presidential Strip View Suites offer 2,225 sq. ft. (207 m²) of sleek, contemporary design.

From the entry foyer with powder room, step into a sprawling living room with a choice of seating areas and an executive desk – all backed by wraparound, floor-to-ceiling panoramas of the Las Vegas Strip. The separate dining room for eight guests connects to a convenient kitchen pantry. With sunrise views, the secluded master bedroom features an en suite bath and oversized walk-in closet. These suites are also available with two or three bedrooms.

- [VIEW FLOOR PLAN ▶](#)
- [COMPARISON CHART ▶](#)
- [SUITE AMENITIES ▶](#)

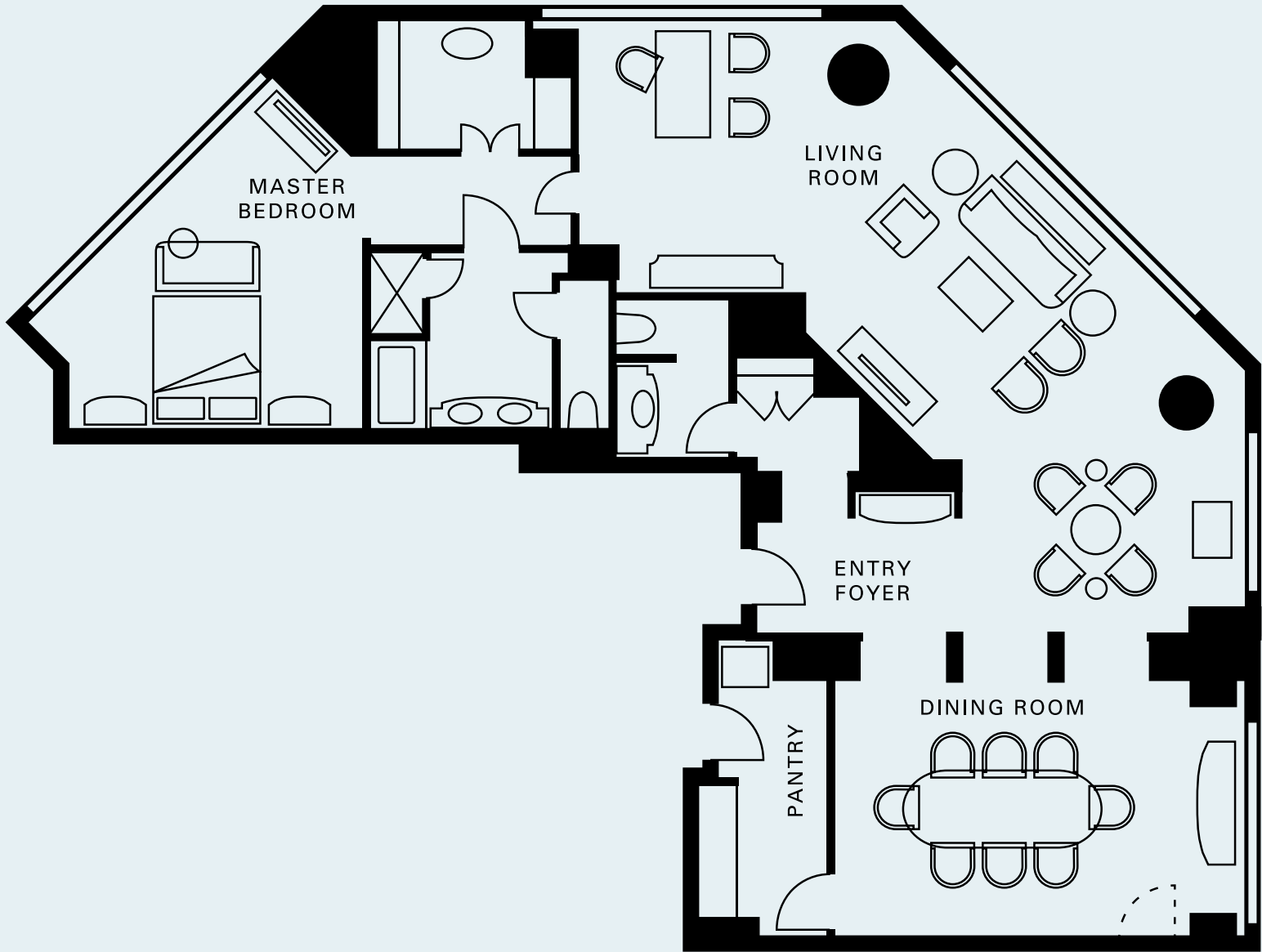
[MORE INFORMATION ON FOURSEASONS.COM](#)

[RATES AND AVAILABILITY ▶](#)



STRIP VIEW PRESIDENTIAL SUITES

SIZE	<ul style="list-style-type: none">• One-bedroom: 2,225 sq. ft. (207 m²)• Two-bedroom: 2,725 sq. ft. (253 m²)• Three-bedroom: 3,225 sq. ft. (300 m²)
NUMBER OF SUITES	5
LOCATION	35th to 39th floors
VIEW	Entire Las Vegas Strip, including sunrise over the city
OCCUPANCY	<ul style="list-style-type: none">• One-bedroom: 4 adults or 2 adults and 2 children• Two-bedroom: 6 adults or 4 adults and 2 children• Three-bedroom: 8 adults or 4 adults and 4 children
BEDS	<ul style="list-style-type: none">• One-bedroom: One king bed, one sofa bed, two rollaways and one crib (additional fee applies for rollaway)• Two-bedroom: Two king beds, one sofa bed, two rollaways and two cribs (additional fee applies for rollaway)• Three-bedroom: Three king beds, one sofa bed, two rollaways and three cribs (additional fee applies to rollaway)
BATHROOMS	<ul style="list-style-type: none">• Up to three full marble bathrooms with deep soaking tub, separate glass-enclosed shower, and a mirror with integrated television (master bathroom only)• Guest powder room
LIVING/DINING AREA	<ul style="list-style-type: none">• Expanded living room, including a 75-inch (191-centimetre) flat-screen LED television with 60 high-definition channels, a media hub and an upgraded electronics package• Separate dining room, seating eight• Large kitchen pantry with a full-size refrigerator, deluxe coffee and tea machines, and various appliances• Generously proportioned desk and ergonomic task chair
MASTER BEDROOM	<ul style="list-style-type: none">• Floor-to-ceiling windows with stunning panoramic views• Walk-in closet with bench for seating• 55-inch (140-centimetre) flat-screen LED television



◀ BACK TO SUITE DESCRIPTION



THE STRIKING

PANORAMIC SUITES

DISCOVER MORE ▶



PANORAMIC SUITES

With floor-to-ceiling windows facing in two directions, these dazzling 1,500-sq.-ft. (139-m²) one-bedroom suites provide dramatic sunrise views of the majestic desert and valley or panoramas of the Spring Mountain range and Allegiant Stadium.

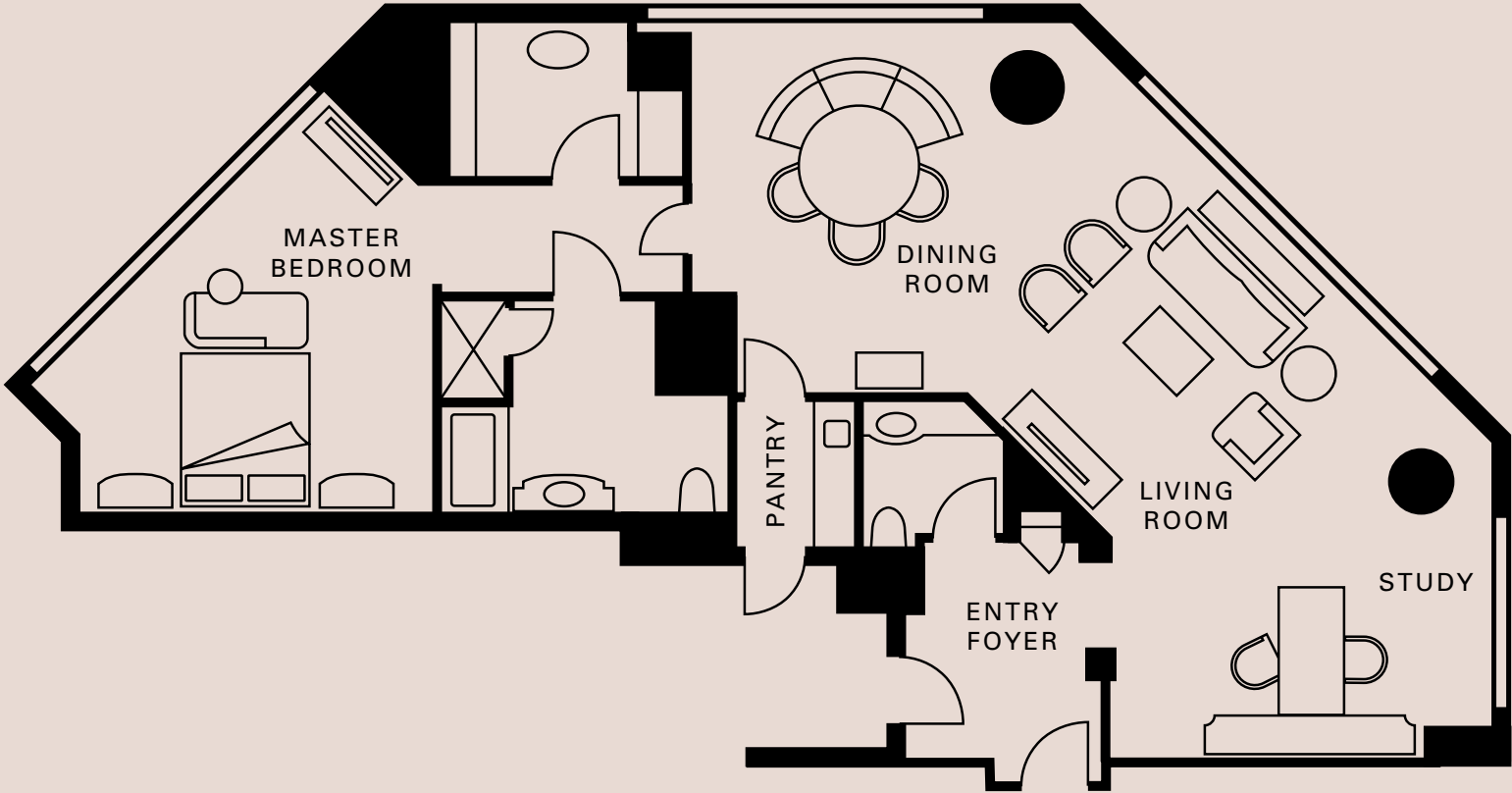
A formal entry foyer with powder room leads to an expansive living area, including a study, living room, and dining room served from a kitchen pantry. The master bedroom features a walk-in closet and marble bath. These suites are also available with two or three bedrooms.

[VIEW FLOOR PLAN ▶](#)
[COMPARISON CHART ▶](#)
[SUITE AMENITIES ▶](#)

[MORE INFORMATION
ON \[FOURSEASONS.COM\]\(#\)](#)
[RATES AND AVAILABILITY ▶](#)

PANORAMIC SUITES

SIZE	<ul style="list-style-type: none">• One-bedroom: 1,500 sq. ft. (139 m²)• Two-bedroom: 2,000 sq. ft. (186 m²)• Three-bedroom: 2,500 sq. ft. (232 m²)
NUMBER OF SUITES	10
LOCATION	35th to 39th floors
VIEW	Stadium view or sunrise view
OCCUPANCY	<ul style="list-style-type: none">• One-bedroom: 4 adults or 2 adults and 2 children• Two-bedroom: 6 adults or 4 adults and 2 children• Three-bedroom: 10 adults or 6 adults and 4 children
BEDS	<ul style="list-style-type: none">• One-bedroom: One king bed, one sofa bed, two rollaways and one crib (additional fee applies for rollaway)• Two-bedroom: Two king beds, one sofa bed, two rollaways and two cribs (additional fee applies for rollaway)• Three-bedroom: Two king beds, one sofa bed and two double beds, three rollaways and three cribs (additional fee applies to rollaway)
BATHROOMS	<ul style="list-style-type: none">• Up to three full marble bathrooms with deep soaking tub, separate glass-enclosed shower, and a mirror with integrated television (master bathroom only)• Guest powder room
LIVING/DINING AREA	<ul style="list-style-type: none">• Expansive living room flowing to an open dining room• Generously proportioned desk and an ergonomic task chair in the separate work area• Kitchen pantry with deluxe coffee and tea making machines• 75-inch (191-centimetre) flat-screen LED television
MASTER BEDROOM	<ul style="list-style-type: none">• Stunning views of the sunrise or sunset through floor-to-ceiling windows• Walk-in closet• 55-inch (140-centimetre) flat-screen LED television
HIGHLIGHTS	<ul style="list-style-type: none">• Private bar• High-speed wireless Internet



◀ BACK TO SUITE DESCRIPTION



THE EXPANSIVE

VALLEY VIEW SUITES

DISCOVER MORE ▶



VALLEY VIEW SUITES

With a panorama of the valley, mountains and desert, our 1,700-sq.-ft. (158-m²), one-bedroom Valley View Suites promise a deluxe Las Vegas experience.

The entrance features a formal foyer with a guest powder room and walk-in closet. Continue through to the private study and the formal dining area, served by a large kitchen pantry. The focalpoint is the living room – designed for entertaining with a focus on the floor-to-ceiling desert-valley view. Perfect for late sleepers, the window-free master bedroom includes a walk-in closet and en suite marble bathroom. These suites are also available with two bedrooms.



- [VIEW FLOOR PLAN ▶](#)
- [COMPARISON CHART ▶](#)
- [SUITE AMENITIES ▶](#)

[MORE INFORMATION ON FOURSEASONS.COM](#)

[RATES AND AVAILABILITY ▶](#)

VALLEY VIEW SUITES

SIZE	<ul style="list-style-type: none">• One-bedroom: 1,700 sq. ft. (158 m²)• Two-bedroom: 2,200 sq. ft. (204 m²)
NUMBER OF SUITES	5
LOCATION	35th to 39th floors
VIEW	Mountain ranges, valley and desert views
OCCUPANCY	<ul style="list-style-type: none">• One-bedroom: 4 adults or 2 adults and 2 children• Two-bedroom: 6 adults or 4 adults and 2 children
BEDS	<ul style="list-style-type: none">• One-bedroom: One king bed, one sofa bed, two rollaways and one crib (additional fee applies for rollaway)• Two-bedroom: Two king beds, one sofa bed, two rollaways and two cribs (additional fee applies for rollaway)
BATHROOMS	<ul style="list-style-type: none">• Up to two full marble bathrooms with deep soaking tub, separate glass-enclosed shower, and a mirror with integrated television (master bathroom only)• Guest powder room
LIVING/DINING AREA	<ul style="list-style-type: none">• Pullout sofa bed – making the suite flexible for families• Dining table for six• Large kitchen pantry with full-size refrigerator, deluxe coffee and tea machines, and various appliances• Generously proportioned desk and ergonomic task chair• 75-inch (191-centimetre) flat-screen LED television
MASTER BEDROOM	<ul style="list-style-type: none">• Stunning views through floor-to-ceiling windows• 75-inch (191-centimetre) flat-screen LED television
HIGHLIGHTS	<ul style="list-style-type: none">• Two walk-in closets (in foyer and master bedroom)• High-speed wireless Internet





THE DELUXE
ONE-BEDROOM
SUITES

Floor-to-ceiling windows in our One-Bedroom Suites provide a postcard perspective of the iconic marquees of the Las Vegas Strip, majestic desert landscapes or panoramas of the Spring Mountain range and Allegiant Stadium. With a large living room for relaxing and entertaining, these 1,100-sq.-ft. (102-m²) suites feature bold colors and chic, sophisticated design. The bedroom includes a sitting area, abundant closet space and an en suite bathroom. An additional powder room for guests is located at the entrance.

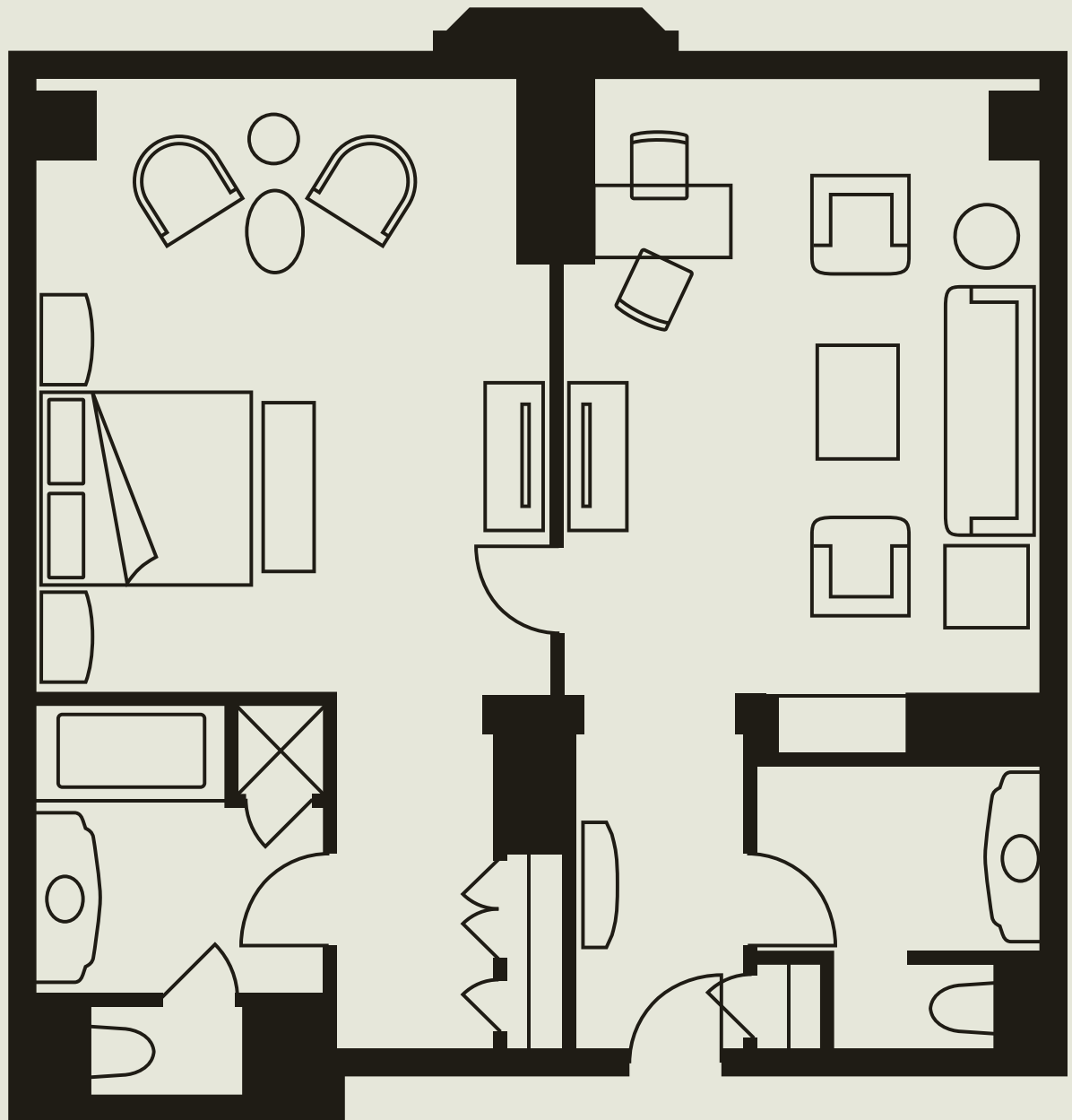


[VIEW FLOOR PLAN ▶](#)
[COMPARISON CHART ▶](#)
[SUITE AMENITIES ▶](#)

[MORE INFORMATION
ON \[FOURSEASONS.COM\]\(#\)](#)
[RATES AND AVAILABILITY ▶](#)

ONE-BEDROOM SUITES

SIZE	<ul style="list-style-type: none">• One-bedroom: 1,100 sq. ft. (102 m²)• Two-bedroom: 1,650 sq. ft (153 m²)• Three-bedroom: 2,200 sq. ft. (204 m²)
NUMBER OF SUITES	35
LOCATION	35th to 39th floors
VIEWS	Mountains and desert, strip view or stadium view
OCCUPANCY	<ul style="list-style-type: none">• One-bedroom: 4 adults or 2 adults and 2 children• Two-bedroom: 8 adults or 4 adults and 4 children• Three-bedroom: 10 adults or 6 adults and 4 children
BEDS	<ul style="list-style-type: none">• One-bedroom: One king bed or two double beds, one sofa bed, one rollaway and one crib (additional fee applies for rollaway)• Two-bedroom: One king bed and two double beds or two king beds, one sofa bed two rollaway beds and two cribs (additional fee applies for rollaway)• Three-bedroom: Two king beds and two double beds, one sofa bed, three rollaway beds and three cribs (additional fee applies for rollaway)
BATHROOMS	<ul style="list-style-type: none">• Up to three full marble bathrooms with deep soaking tub, separate glass-enclosed shower, and a mirror with integrated television (master bathroom only)• Guest powder room
LIVING/DINING AREA	<ul style="list-style-type: none">• Spacious seating area with a double sofa bed and two chairs• 75-inch (191-centimetre) flat-screen LED television• Generously proportioned desk and ergonomic task chair
MASTER BEDROOM	<ul style="list-style-type: none">• Sweeping views through floor-to-ceiling windows• Sitting area• Abundant closet space• 75-inch (191-centimetre) flat-screen LED television
HIGHLIGHTS	<ul style="list-style-type: none">• Private bar• High-speed wireless Internet



◀ BACK TO SUITE DESCRIPTION



THE LUXURIOUS
FOUR SEASONS EXECUTIVE SUITES

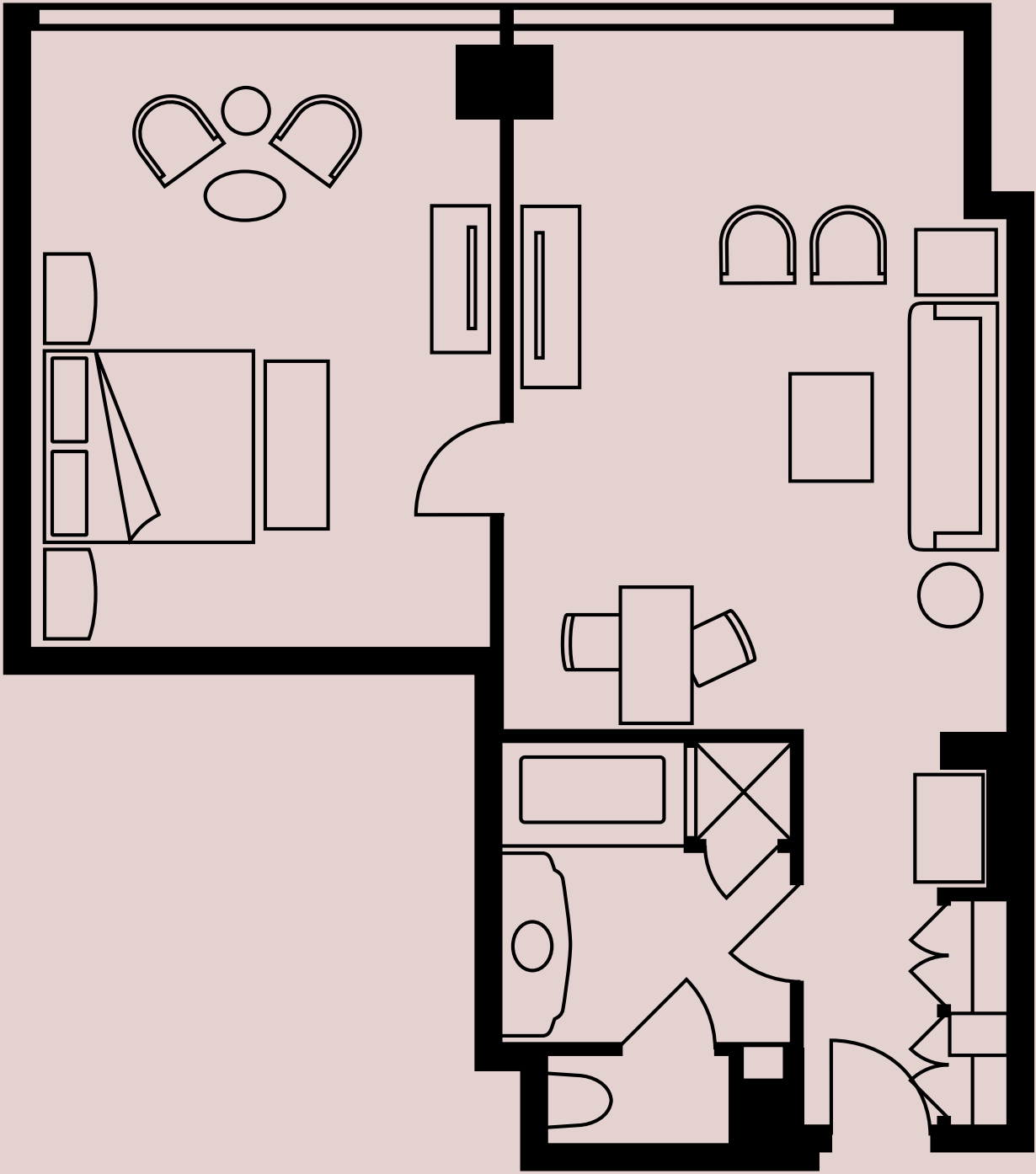
Ideal for business trips, casual meetings or relaxing in spacious comfort, our Four Seasons Executive Suites measure 810 sq. ft. (75 m²) and offer sleek, modern design. The smartly efficient layout includes a separate living room and bedroom, both with TV and sitting areas. Floor-to-ceiling windows inspire with views of the desert horizon and valley or panoramas of the Spring Mountain range and Allegiant Stadium.

[VIEW FLOOR PLAN ▶](#)
[COMPARISON CHART ▶](#)
[SUITE AMENITIES ▶](#)

[MORE INFORMATION
ON \[FOURSEASONS.COM\]\(#\)](#)
[RATES AND AVAILABILITY ▶](#)

FOUR SEASONS EXECUTIVE SUITES

SIZE	810 sq. ft. (75 m²)
NUMBER OF SUITES	11
LOCATION	35th to 39th floors
VIEW	Mountains, valley view or desert view
OCCUPANCY	3 adults or 2 adults and 1 children
BEDS	One king bed, one sofa bed, one rollaway bed and one crib (additional fee applies for rollaway)
BATHROOMS	One full marble bathroom with integrated television
LIVING/DINING AREA	<ul style="list-style-type: none">• Living area separated by doors from the bedroom, adding privacy• 75-inch (191-centimetre) LED television in the living room• Multimedia hub on the television credenza, which allows you to charge your personal electronic devices and enjoy your favorite media• Generously proportioned desk and ergonomic task chair
MASTER BEDROOM	<ul style="list-style-type: none">• Stunning views of the horizon and majestic mountain ranges through floor-to-ceiling windows• Sitting area• 75-inch (191-centimetre) flat-screen LED television
HIGHLIGHTS	<ul style="list-style-type: none">• Private bar• High-speed wireless Internet



◀ BACK TO SUITE DESCRIPTION

COMPARISON CHART

SUITES	NUMBER	SIZE	LOCATION	OCCUPANCY	VIEW	BEDS	BATHROOMS
Penthouse Suites	2	One-bedroom: 3,400 sq. ft. (316 m²) Two-bedroom: 3,900 sq. ft. (362 m²) Three-bedroom: 4,400 sq. ft. (409 m²)	38 and 39th floors	One-bedroom: 4 adults or 2 adults and 2 children Two-bedroom: 6 adults or 4 adults and 2 children Three-bedroom: 10 adults or 6 adults and 4 children	Allegiant Stadium, mountain and sunset views	One-bedroom: One king bed, one sofa bed Two-bedroom: Two king beds, one sofa bed Three-bedroom: Three king beds, one sofa bed	One full marble bathroom plus a guest powder room
Strip View Presidential Suites	5	One-bedroom: 2,225 sq. ft. (207 m²) Two-bedroom: 2,725 sq. ft. (253 m²) Three-bedroom: 3,225 sq. ft. (300 m²)	35 to 39th floors	One-bedroom: 4 adults or 2 adults and 2 children Two-bedroom: 6 adults or 4 adults and 2 children Three-bedroom: 8 adults or 4 adults and 4 children	Entire Las Vegas strip, including the sunrise over the city	One-bedroom: One king bed, one sofa bed Two-bedroom: Two king beds, one sofa bed Three-bedroom: Three king beds, one sofa bed	One full marble bathroom, plus guest powder room
Panoramic Suites	10	One-bedroom: 1,500 sq. ft. (139 m²) Two-bedroom: 2,000 sq. ft. (186 m²) Three-bedroom: 2,500 sq. ft. (232 m²)	35 to 39th floors	One-bedroom: 4 adults or 2 adults and 2 children Two-bedroom: 6 adults or 4 adults and 2 children Three-bedroom: 10 adults or 6 adults and 4 children	Stadium view or sunrise view	One-bedroom: One king bed, one sofa bed Two-bedroom: Two king beds, one sofa bed Three-bedroom: Two king beds, one sofa bed and two double beds	One full marble bathroom, plus guest powder room
Valley View Suites	5	One-bedroom: 1,700 sq. ft. (158 m²) Two-bedroom: 2,200 sq. ft. (204 m²)	35 to 39th floors	One-bedroom: 4 adults or 2 adults and 2 children Two-bedroom: 6 adults or 4 adults and 2 children	Mountain ranges, valley and desert views	One-bedroom: One king bed, one sofa bed Two-bedroom: Two king beds, one sofa bed	One full marble bathroom, plus guest powder room
One-Bedroom Suites	50	One-bedroom: 1,100 sq. ft. (102 m²) Two-bedroom: 1,650 sq. ft (153 m²) Three-bedroom: 2,200 sq. ft. (204 m²)	35 to 39th floors	One-bedroom: 4 adults or 2 adults and 2 children Two-bedroom: 8 adults or 4 adults and 4 children Three-bedroom: 10 adults or 6 adults and 4 children	Mountains and desert, or strip view or stadium view	One-bedroom: One king bed or two double beds, one sofa bed Two-bedroom: One king bed and two double beds or two king beds, one sofa bed Three-bedroom: Two king beds and two double beds, one sofa bed	One full marble bathroom, plus guest powder room
Four Seasons Executive Suites	9	810 sq. ft. (75 m²)	35 to 39th floors	3 adults, or 2 adults and 1 child	Mountains, valley view or desert view	One king bed, one sofa bed	One full marble bathroom



SUITE AMENITIES

BED & BATH

- Down duvets
- Down pillows
- Hair dryer
- Hypoallergenic pillows on request
- Thick terry bathrobes
- Marble bathrooms with backlit mirrors and an integrated television system

INTERNET ACCESS

- High-speed wireless Internet access

SERVICES & AMENITIES

- Twice-daily housekeeping service
- Multi-line telephone(s) with voicemail and conference call capability

ENTERTAINMENT

- LED television with multimedia hub in the living room
- All-news cable network
- Bose Bluetooth speakers
- Daily newspaper delivery

ROOM FEATURES

- In-room safe
- Refrigerated private bar
- Coffee and tea making machines



HOTEL OVERVIEW

LOCATION

- On the south end of the Las Vegas Strip, within the Mandalay Bay complex
- Separate Four Seasons driveway, lobby and amenities; direct indoor access to the Mandalay Bay casino
- Easily accessible from Interstate 15; ample on-site parking
- 15 minutes (3 miles/4.8 kilometres) from McCarran International Airport (LAS)

ACCOMMODATIONS

- 424 stylish guest rooms, including 81 suites, elevated on floors 35 to 39 of the Mandalay Bay tower
- Floor-to ceiling windows with views of the glittering Las Vegas Strip, the desert and mountains
- The new Four Seasons Bed, customizable for individual comfort
- Spacious marble bathroom with oversized tub, glass-enclosed shower and backlit mirror with an integrated television (master bathrooms only)

DINING

- Veranda for modern American cuisine, indoor or al fresco dining
- Pool Bar, serving an informal poolside lunch menu
- PRESS, a lobby bar, featuring a lushly landscaped outdoor patio with sofa seating overlooking the pool
- Additional dining options within Mandalay Bay
- 24-hour In-Room Dining

SPA & RECREATION

- Exclusive Four Seasons outdoor pool and whirlpool
- Access to Mandalay Bay pools for families and adults
- Expansive spa, including 12 treatment rooms, specializing in results-oriented treatments
- 10,700 sq. ft. (995 m²) fitness center, featuring state-of-the-art cardio- and strength-training equipment
- Luxurious men’s and women’s locker rooms, relaxation lounges and steam rooms

MEETINGS & EVENTS

- 38,200 sq. ft. (3,548 m²) of recently refreshed function space, ideal for gala banquets, private receptions and meetings for 9 to 900 guests
- Meet & Feed events for 300; banquets for 600
- Two ballrooms and eight function rooms – many with natural light – plus three outdoor event spaces



BOOK YOUR
SUITE STAY

RESERVATIONS.VGS@FOURSEASONS.COM

IF YOU HAVE ANY QUESTIONS, CONTACT US:

FOUR SEASONS HOTEL LAS VEGAS
3960 Las Vegas Boulevard South
Las Vegas, Nevada 89119
Tel. 1 (702) 632-5000 / Fax. 1 (702) 632-5195

Connect with us
[fourseasons.com/lasvegas](https://www.fourseasons.com/lasvegas)

