



FOUR SEASONS
HOTEL
MADRID

STAY
WITH US IN
MADRID

[EXPLORE OUR SUITES PORTFOLIO >](#)





WELCOME

With a location in the city's vibrant heart, Four Seasons Hotel Madrid combines seven historical buildings in one dynamic destination, the innovative Centro Canalejas.

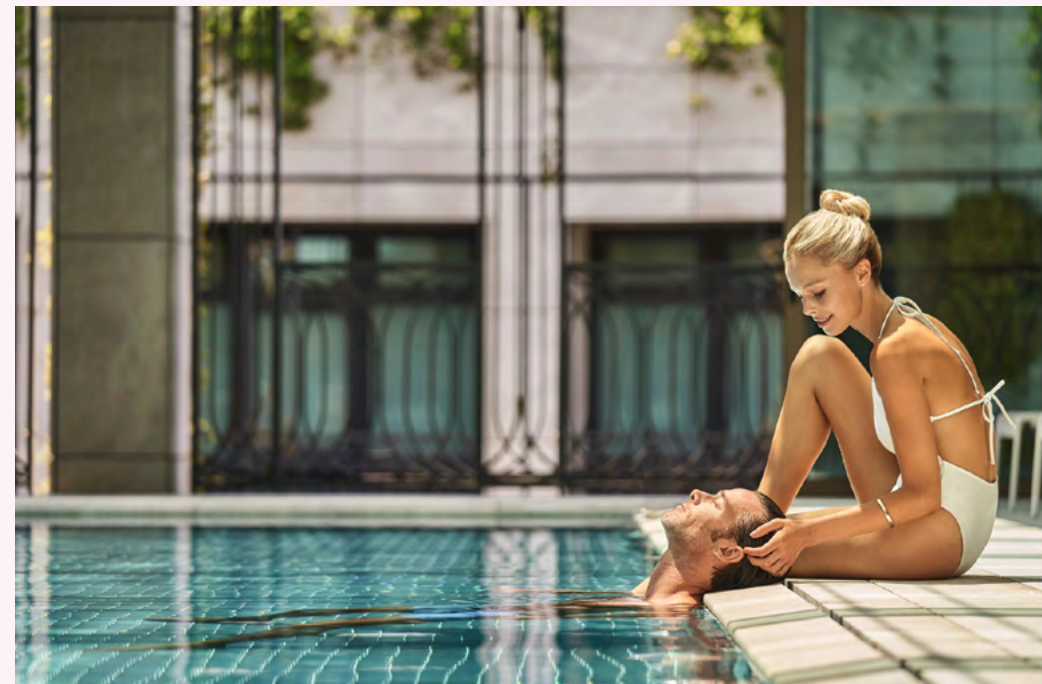
[DISCOVER OUR HOTEL >](#)



STAY

Our collection of 200 accommodations includes spacious guest rooms, along with Suites, Specialty Suites, and Family and Friends Suites with one to five bedrooms.

[SELECT YOUR SUITE >](#)



INDULGE

Discover a rooftop brasserie by celebrity Chef Dani García, Asian street food at Isa Restaurant & Cocktail Bar, and our comfortable lobby lounge, El Patio.

[EXPLORE OUR RESTAURANTS >](#)

IMMERSE

In the city's largest urban wellness centre, unwind with luxurious spa treatments, dip into our rooftop pool and look your very best at the Rossano Ferretti Hair Spa.

[RELAX IN OUR WELLNESS CENTRE >](#)



GUEST ROOMS

Discover a quiet hideaway in the heart of Madrid. We invite you to choose from six different options for guest rooms – all bright, spacious and decorated in a style that is comfortably classical with modern detailing. Some open outdoors to a Juliet balcony or a furnished terrace. Choose from views of city streetscapes or the charming open-air courtyard hidden at the centre of the building.

AT A GLANCE

🛏 ONE KING BED OR TWO DOUBLE BEDS

📏 45–65 m² (484–700 SQ. FT.)

👤 2–3 GUESTS

[LEARN MORE ON
FOURSEASONS.COM >](#)



COURTYARD SUITE

Ideal for a business trip or holiday getaway, this spacious suite provides extra living space for entertaining friends or relaxing on your own. A sliding door provides a sense of separation from the sleeping area. With a location facing our open-air courtyard – away from the street – this suite promises blissful peace and quiet.

AT A GLANCE

🛏 ONE KING BED

📏 77–87 m² (823–936 SQ. FT.)

👤 3 GUESTS, INCLUDING
UP TO 2 CHILDREN

[VIRTUAL TOUR >](#)

[FLOOR PLAN
AND DETAILS >](#)



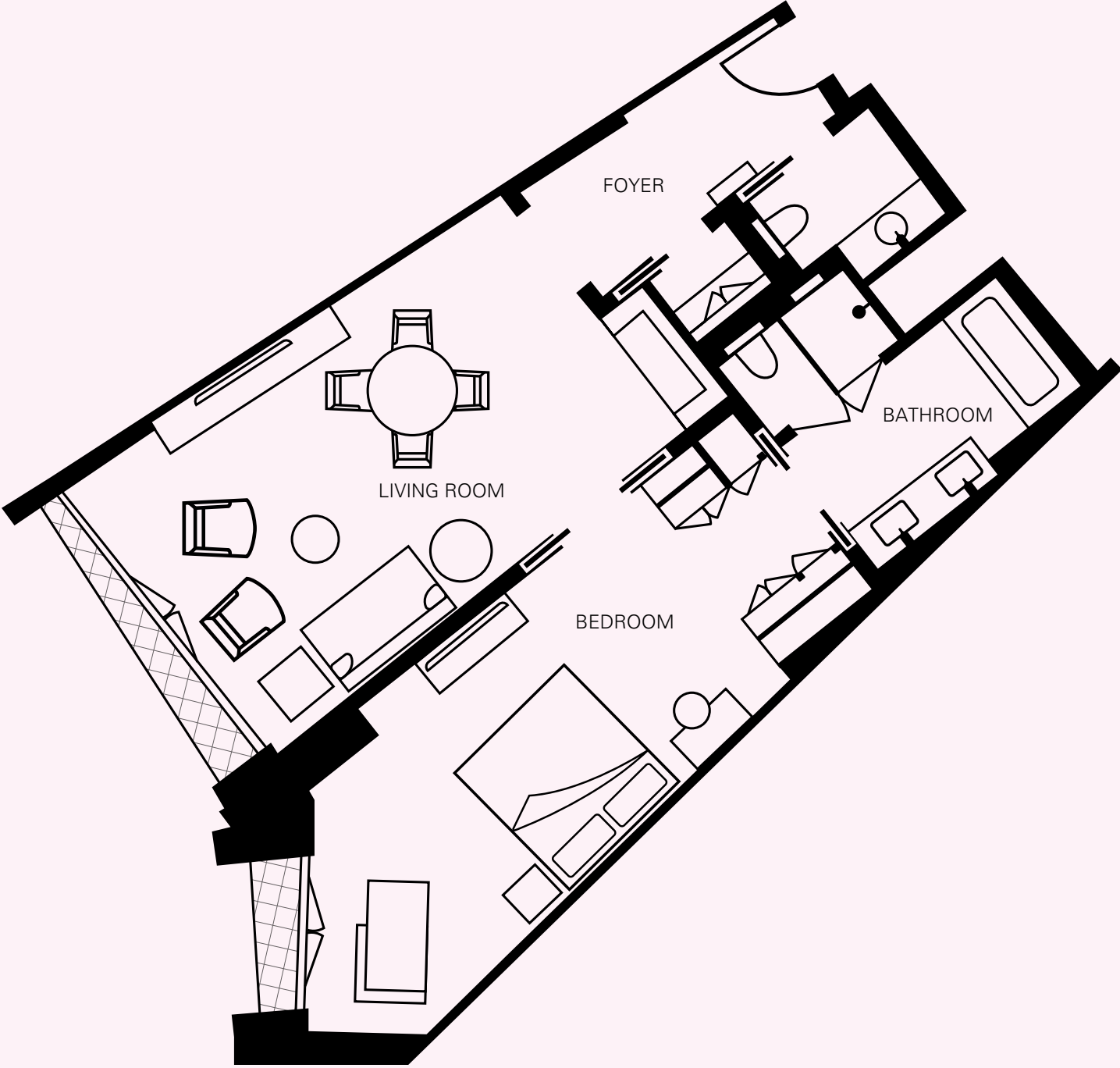
COURTYARD SUITE

EXECUTIVE SUITE

FOUR SEASONS SUITE

LOFT SUITE

FOUR SEASONS SUITE WITH TERRACE



COURTYARD SUITE

FLOOR PLAN AND DETAILS

LOCATION

5th and 6th floors

VIEWS

Courtyard

Room layouts in our Courtyard Suites may differ. Each suite presents its own distinctive view.

SIZE

77–87 m² (823–936 sq. ft.)

BEDS

One king bed, with one sofabed or rollaway on request

BATHROOM

- One full marble bathroom with separate tub and shower
- Guest powder room

UNIQUE FEATURES

- Separate living area
- Desk
- Dining table

[< BACK TO COURTYARD SUITE OVERVIEW](#)

[LEARN MORE ON
FOURSEASONS.COM >](#)



EXECUTIVE SUITE

You'll fall in love with this smartly designed suite, balancing classical and modern style. The living area gives you a comfortable spot to unwind at day's end. A sliding door or a few stairs provide a sense of separation from the sleeping area and deluxe bathroom.

AT A GLANCE

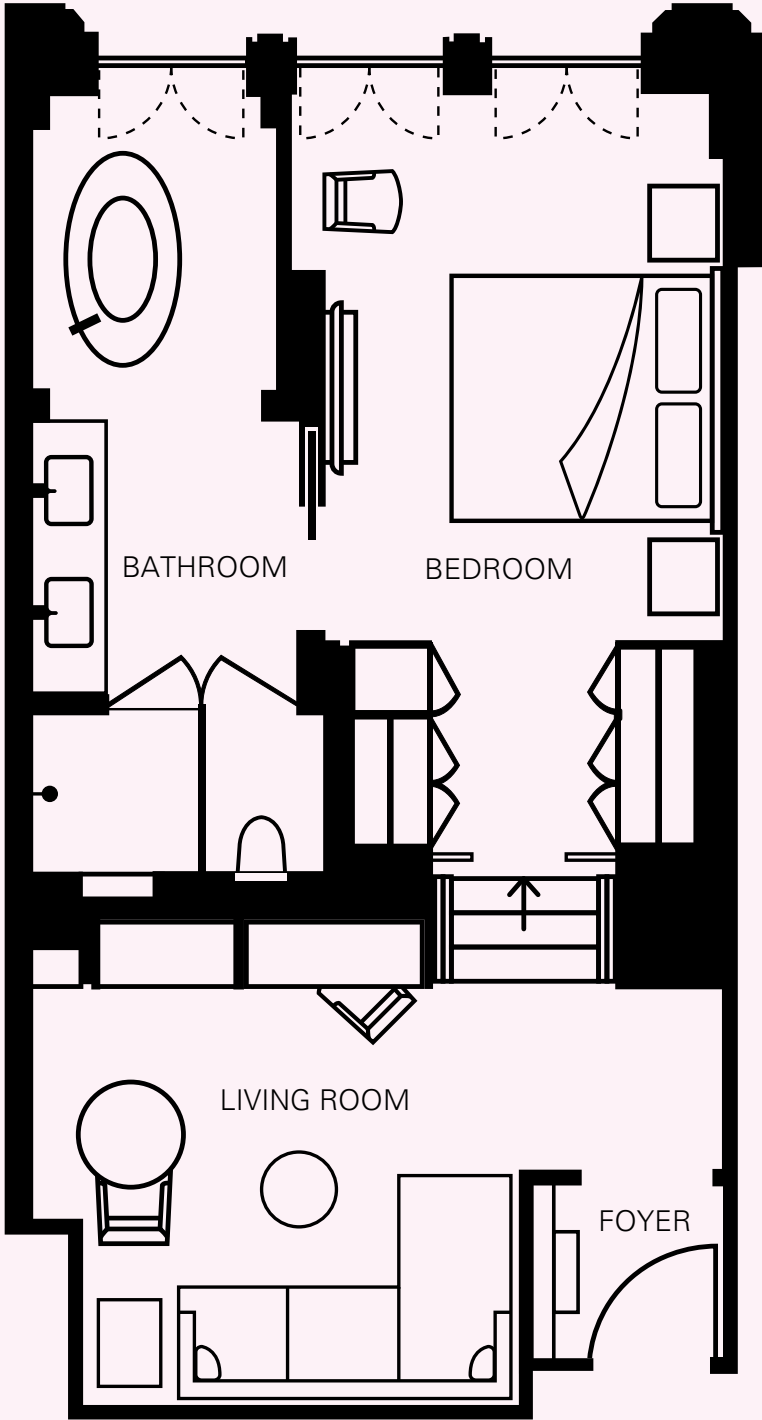
🛏 ONE KING BED

📏 60–77 m²
(645–829 SQ. FT.)

👤 3 GUESTS, INCLUDING
UP TO 2 CHILDREN

[VIRTUAL TOUR >](#)

[FLOOR PLAN
AND DETAILS >](#)



EXECUTIVE SUITE

FLOOR PLAN AND DETAILS

LOCATION

2nd to 5th floors

VIEWS

Facing Calle de Alcalá or Calle de Sevilla

Room layouts in our Executive Suites may differ. Each suite presents its own distinctive view.

SIZE

60–77 m² (645–829 sq. ft.)

BEDS

One king bed, with one sofabed or rollaway on request

BATHROOM

One full marble bathroom with two vanity sinks, tub and separate shower

UNIQUE FEATURES

- Separate living area
- Desk
- Dining table
- Option for connecting guest room

[< BACK TO EXECUTIVE SUITE OVERVIEW](#)

[LEARN MORE ON
FOURSEASONS.COM >](#)







FOUR SEASONS SUITE

With classic residential style, this suite features a larger living and dining area with a convenient powder room – ideal for hosting family, friends or business colleagues. A solid door creates a private sanctuary for the bedroom and the luxurious ensuite bath.

AT A GLANCE

 ONE KING BED

 80–110 m²
(861–1,184 SQ. FT.)

 3 GUESTS, OR 2 ADULTS
AND 2 CHILDREN
(UP TO THE AGE OF 12)

[VIRTUAL TOUR >](#)

[FLOOR PLAN
AND DETAILS >](#)





FOUR SEASONS SUITE

FLOOR PLAN AND DETAILS

LOCATION

2nd, 3rd, 4th and 6th floors

VIEWS

Facing Calle de Alcalá or Calle de Sevilla

Room layouts in our Four Seasons Suites may differ. Each suite presents its own distinctive view.

SIZE

80–110 m² (861–1,184 sq. ft.)

BEDS

One king bed, with one sofabed or rollaway on request

BATHROOM

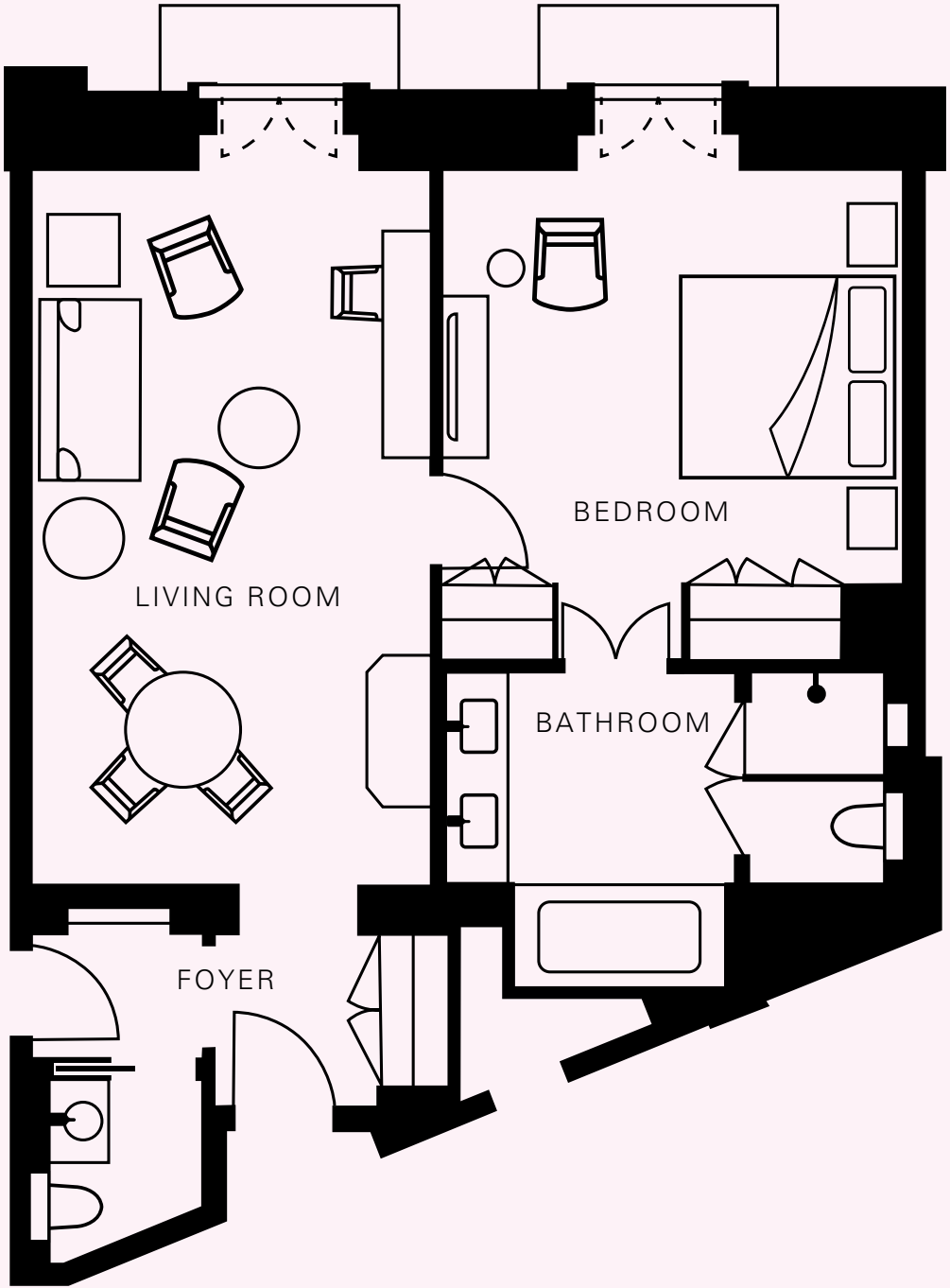
- One full marble bathroom with two vanity sinks, tub and separate shower
- Guest powder room

UNIQUE FEATURES

- Foyer with coat closet
- Separate living area
- Desk
- Dining table
- Option for connecting guest room

[< BACK TO FOUR SEASONS SUITE OVERVIEW](#)

[LEARN MORE ON
FOURSEASONS.COM >](#)





LOFT SUITE

With a soaring, double-height ceiling, this remarkable suite makes a dramatic impression – ideal when receiving friends and family. The formal foyer features a convenient powder room for guests. At the top of the stairs, the airy bedroom features a luxurious ensuite bath, while downstairs, the spacious living room includes a sitting area, dining table and two windows.

AT A GLANCE

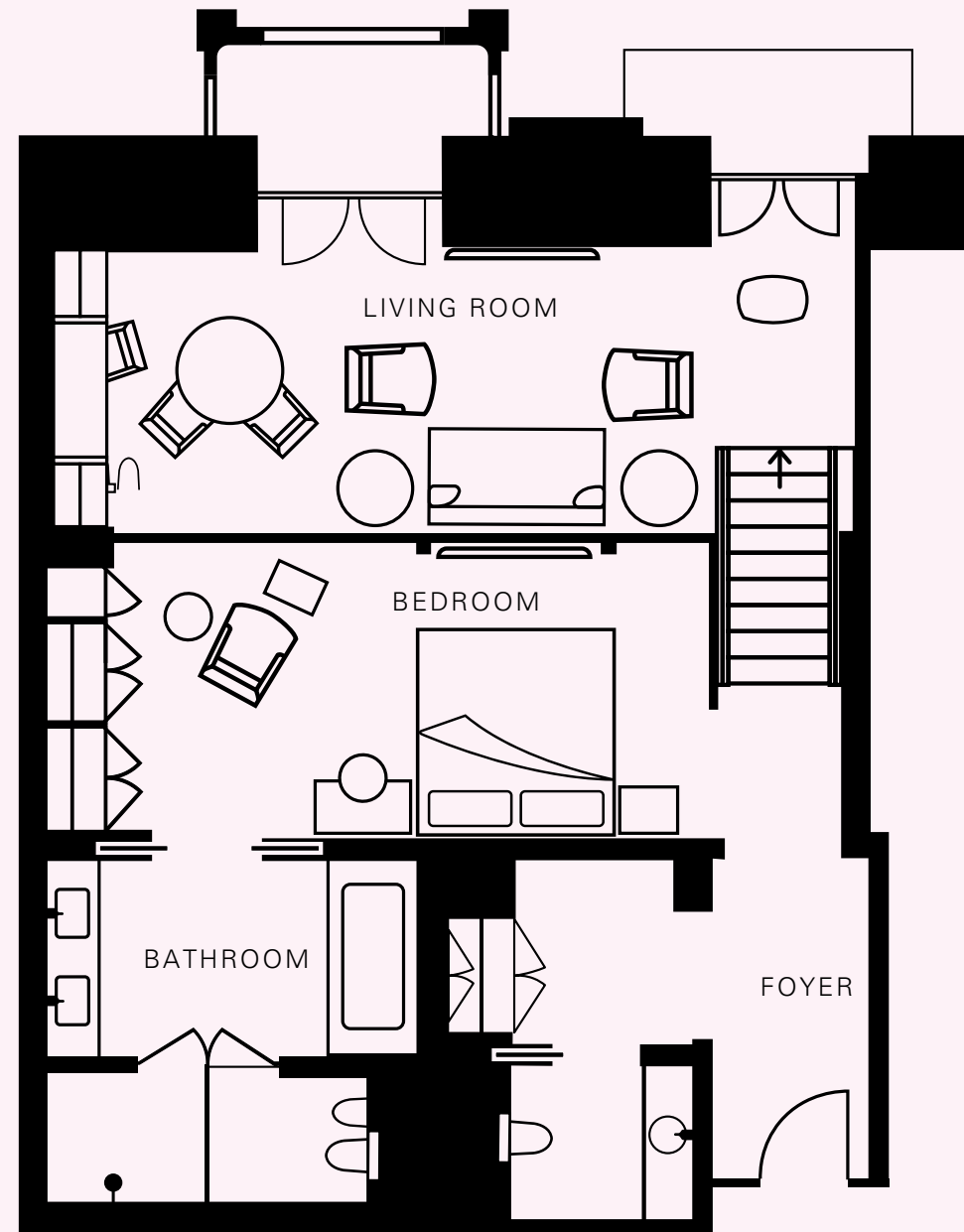
🛏 ONE KING BED

📏 70–105 m²
(753–1,130 SQ. FT.)

👤 3 GUESTS, OR 2 ADULTS
AND 2 CHILDREN
(UP TO THE AGE OF 12)

[VIRTUAL TOUR >](#)

[FLOOR PLAN
AND DETAILS >](#)



LOFT SUITE

FLOOR PLAN AND DETAILS

LOCATION

2nd floor

VIEWS

Facing Calle Alcalá

*Room layouts in our Loft Suites may differ.
Each suite presents its own distinctive view.*

SIZE

70–105 m² (753–1,130 sq. ft.)

BEDS

One king bed, with one sofa bed
or rollaway on request

BATHROOM

- One full marble bathroom with two vanity sinks, tub and separate shower
- Guest powder room

UNIQUE FEATURES

- Foyer with coat closet
- Separate living area
- Desk
- Dining table

[< BACK TO LOFT SUITE OVERVIEW](#)

[LEARN MORE ON
FOURSEASONS.COM >](#)





FOUR SEASONS SUITE WITH TERRACE

With an expansive terrace that's furnished for outdoor living and dining, this bright, airy suite feels like a chic apartment in Madrid's best location. Entertain friends or business colleagues in the living room, separated from the bedroom for extra privacy.

AT A GLANCE

- ONE KING BED
- 82 m² (883 SQ. FT.)
- 3 GUESTS, OR 2 ADULTS AND 2 CHILDREN (UP TO THE AGE OF 12)

[VIRTUAL TOUR >](#)

[FLOOR PLAN AND DETAILS >](#)



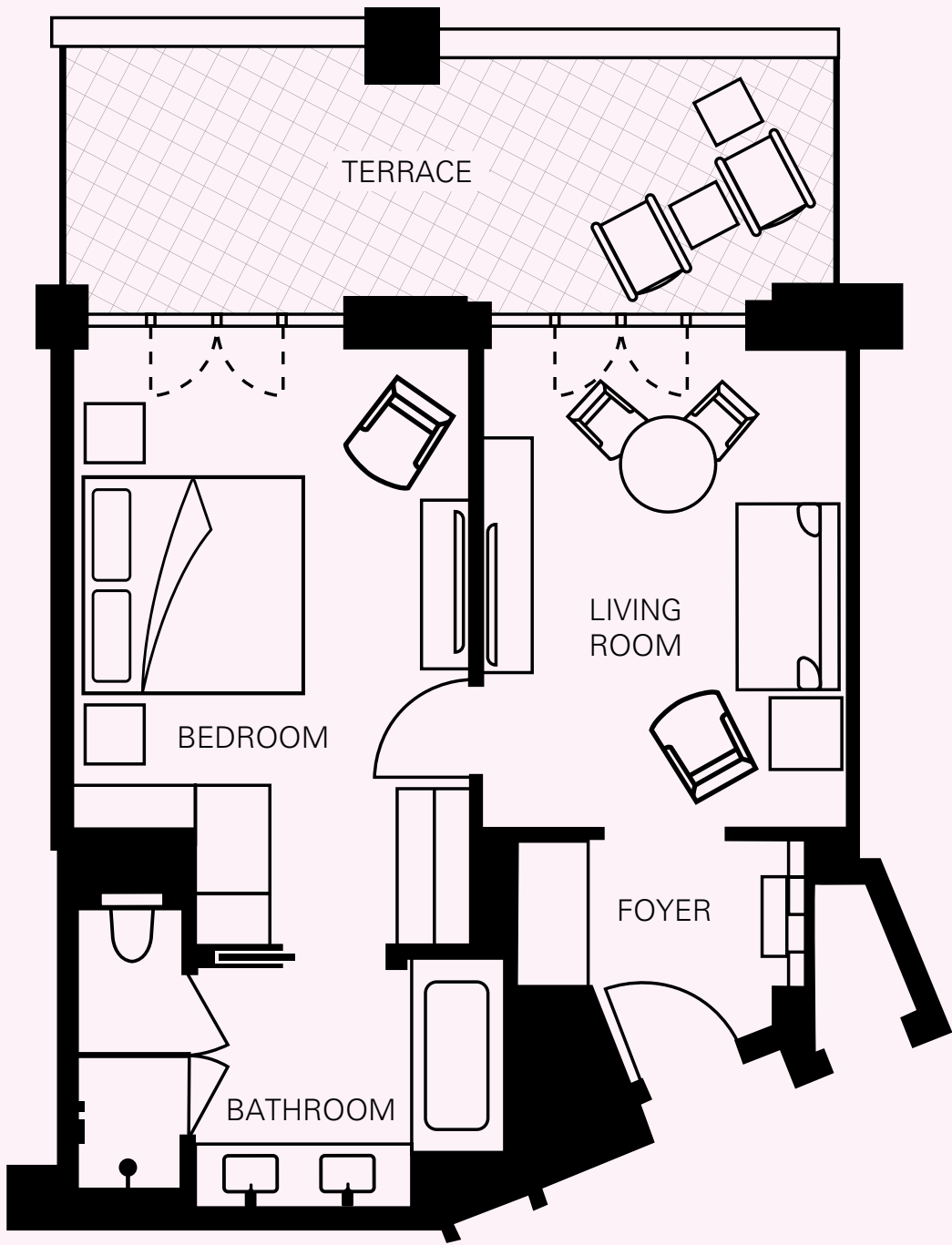
COURTYARD SUITE

EXECUTIVE SUITE

FOUR SEASONS SUITE

LOFT SUITE

FOUR SEASONS SUITE WITH TERRACE



FOUR SEASONS SUITE WITH TERRACE

FLOOR PLAN AND DETAILS

LOCATION

6th floor

VIEWS

Facing Calle de Alcalá or Calle de Sevilla

Room layouts in our Four Seasons Suites may differ. Each Suite with Terrace presents its own distinctive view.

SIZE

82 m² (883 sq. ft.)

BEDS

One king bed, with one sofabed or rollaway on request

BATHROOM

One full marble bathroom with two vanity sinks, tub and separate shower

UNIQUE FEATURES

- Private furnished terrace
- Separate living area
- Desk
- Dining table

[< BACK TO FOUR SEASONS SUITE WITH TERRACE OVERVIEW](#)

[LEARN MORE ON
FOURSEASONS.COM >](#)



PENTHOUSE SUITE WITH TERRACES

On our highest floor, at the triangular tip of the building, this one-bedroom suite feels like a glamorous residence for entertaining or enjoying an extended stay. Luxe interiors are framed by two large terraces – lovely for al fresco meals or sunset drinks with views of the city. Opening onto its own terrace, the bedroom features a spectacular sunlit bathroom with a free-standing oval tub.

AT A GLANCE

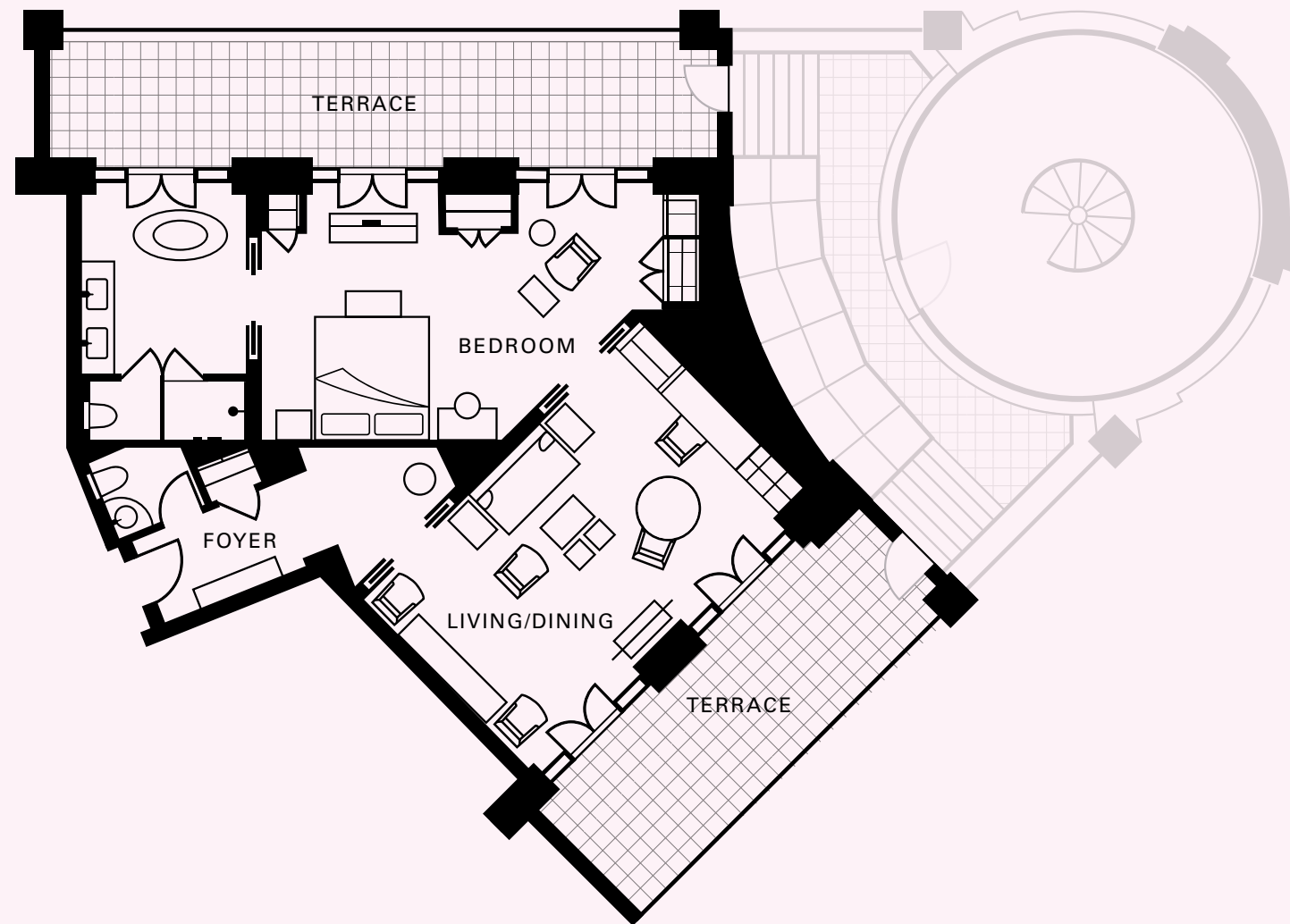
🛏 ONE KING BED

📏 96 m² (1,033 SQ. FT.)

👤 3 GUESTS, OR 2 ADULTS
AND 2 CHILDREN
(UP TO THE AGE OF 12)

[VIRTUAL TOUR >](#)

[FLOOR PLAN
AND DETAILS >](#)



PENTHOUSE SUITE WITH TERRACES

FLOOR PLAN AND DETAILS

LOCATION

6th floor

VIEWS

Facing both Calle de Alcalá and Calle de Sevilla

SIZE

96 m² (1,033 sq. ft.)

BEDS

One king bed, with one rollaway on request

BATHROOM

- One full marble bathroom with two vanity sinks, a separate shower and free-standing tub
- Guest powder room

UNIQUE FEATURES

- Two private furnished terraces
- Separate living area and dining table
- Daily American breakfast included for two guests
- Complimentary luggage packing and unpacking (max. 1 hour each)

[< BACK TO PENTHOUSE SUITE OVERVIEW](#)

[LEARN MORE ON
FOURSEASONS.COM >](#)





CANALEJAS TWO-BEDROOM SUITE

Named for the famous Plaza Canalejas it overlooks, this two-bedroom suite features a grand entrance, stepping down into a large living area with a classic Juliet balcony, dining table and a well-equipped pantry for serving. The décor features many historical pieces, including wooden doors, door handles and marble casings. A truly one-of-a-kind suite.

AT A GLANCE

🛏 TWO KING BEDS

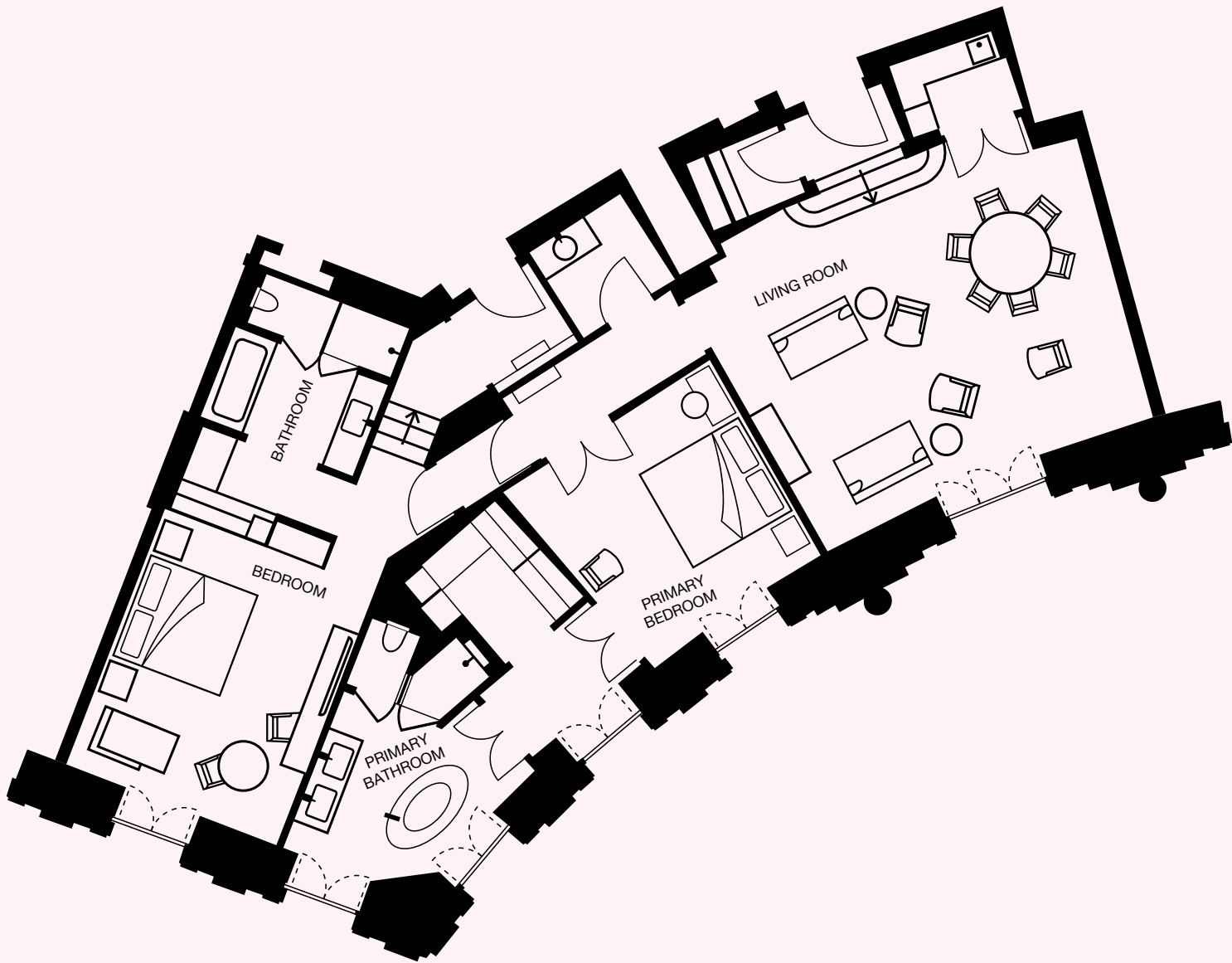
📏 172 m² (1,850 SQ. FT.)

👤 5 GUESTS, INCLUDING
UP TO 4 CHILDREN

[VIRTUAL TOUR >](#)

[FLOOR PLAN AND DETAILS >](#)





CANALEJAS TWO-BEDROOM SUITE

FLOOR PLAN AND DETAILS

LOCATION

3rd floor

VIEWS

Facing Plaza de Canalejas

SIZE

172 m² (1,850 sq. ft.)

BEDS

Two king beds, with one rollaway on request

BATHROOM

- Two full marble bathrooms, both with two vanity sinks, one with shower only, one with shower and free-standing oval tub
- Guest powder room

UNIQUE FEATURES

- Desk
- Juliet balconies
- Large living area and dining table
- Daily American breakfast included for up to four guests
- Complimentary luggage packing and unpacking (max. 1 hour each)

[< BACK TO CANALEJAS TWO-BEDROOM SUITE OVERVIEW](#)

[LEARN MORE ON
FOURSEASONS.COM >](#)



AMBASSADOR TWO-BEDROOM SUITE

With a coveted position at our building's triangular point, this light-filled suite offers views to both Calle de Alcalá and Calle de Sevilla. Entertain in the elegantly curved living area, complete with a dining table for six. The two bedrooms are well separated for privacy – ideal for friends or family sharing a Madrid adventure.

AT A GLANCE

🛏 TWO KING BEDS

📏 168–170 m²
(1,808–1,830 SQ. FT.)

👤 5 ADULTS, INCLUDING
UP TO 4 CHILDREN

[VIRTUAL TOUR >](#)

[FLOOR PLAN
AND DETAILS >](#)



AMBASSADOR TWO-BEDROOM SUITE

FLOOR PLAN AND DETAILS

LOCATION

3rd and 4th floors

VIEWS

Facing Calle de Alcalá or Calle de Sevilla

Room layouts in our Ambassador Two-Bedroom Suites may differ. Each suite presents its own distinctive view.

SIZE

168–170 m² (1,808–1,830 sq. ft.)

BEDS

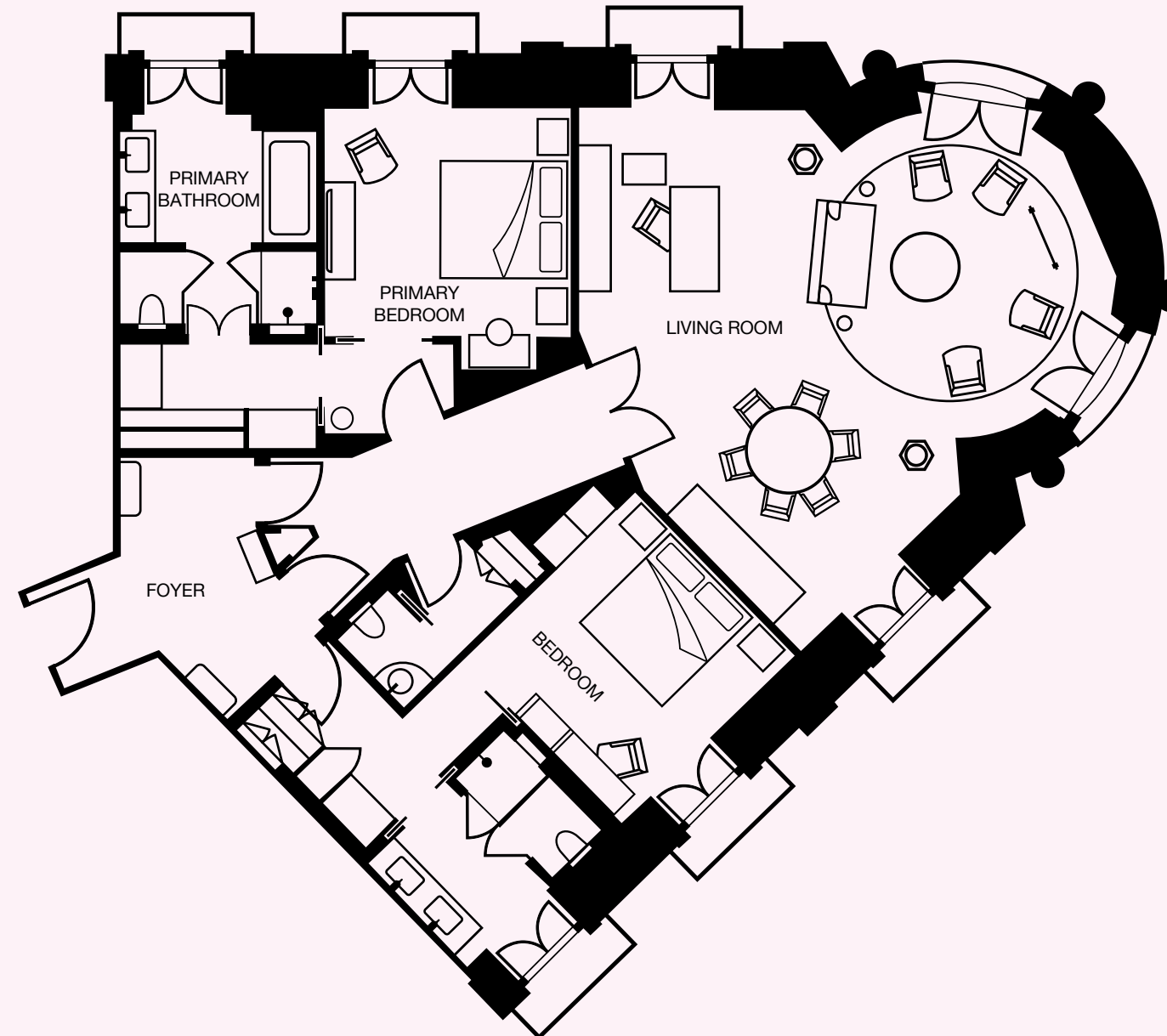
Two king beds, with one rollaway on request

BATHROOM

- Two full marble bathrooms, both with two vanity sinks, one with tub and shower, one with shower only
- Guest powder room

UNIQUE FEATURES

- Formal entrance foyer
- Large living area
- Dining table for six
- Daily American breakfast included for up to four guests
- Complimentary luggage packing and unpacking (max. 1 hour each)



[< BACK TO AMBASSADOR
TWO-BEDROOM SUITE OVERVIEW](#)

[LEARN MORE ON
FOURSEASONS.COM >](#)





PRESIDENTIAL TWO-BEDROOM SUITE

With a fifth-floor setting at the building's triangular point, this prestigious suite is designed for glamorous socializing. The style is youthful and dynamic, mixing antiquities with modern furnishings. The deluxe primary bedroom includes its own sitting area, dressing room and a light-filled bathroom with a free-standing oval tub.

AT A GLANCE

🛏 TWO KING BEDS

📏 300 m² (3,229 SQ. FT.)

👤 5 GUESTS, INCLUDING
UP TO 4 CHILDREN

[VIRTUAL TOUR >](#)

[FLOOR PLAN
AND DETAILS >](#)





PRESIDENTIAL TWO-BEDROOM SUITE

FLOOR PLAN AND DETAILS

LOCATION

5th floor

VIEWS

Facing both Calle de Alcalá and Calle de Sevilla

SIZE

300 m² (3,229 sq. ft.)

BEDS

Two king beds, with one rollaway on request

BATHROOM

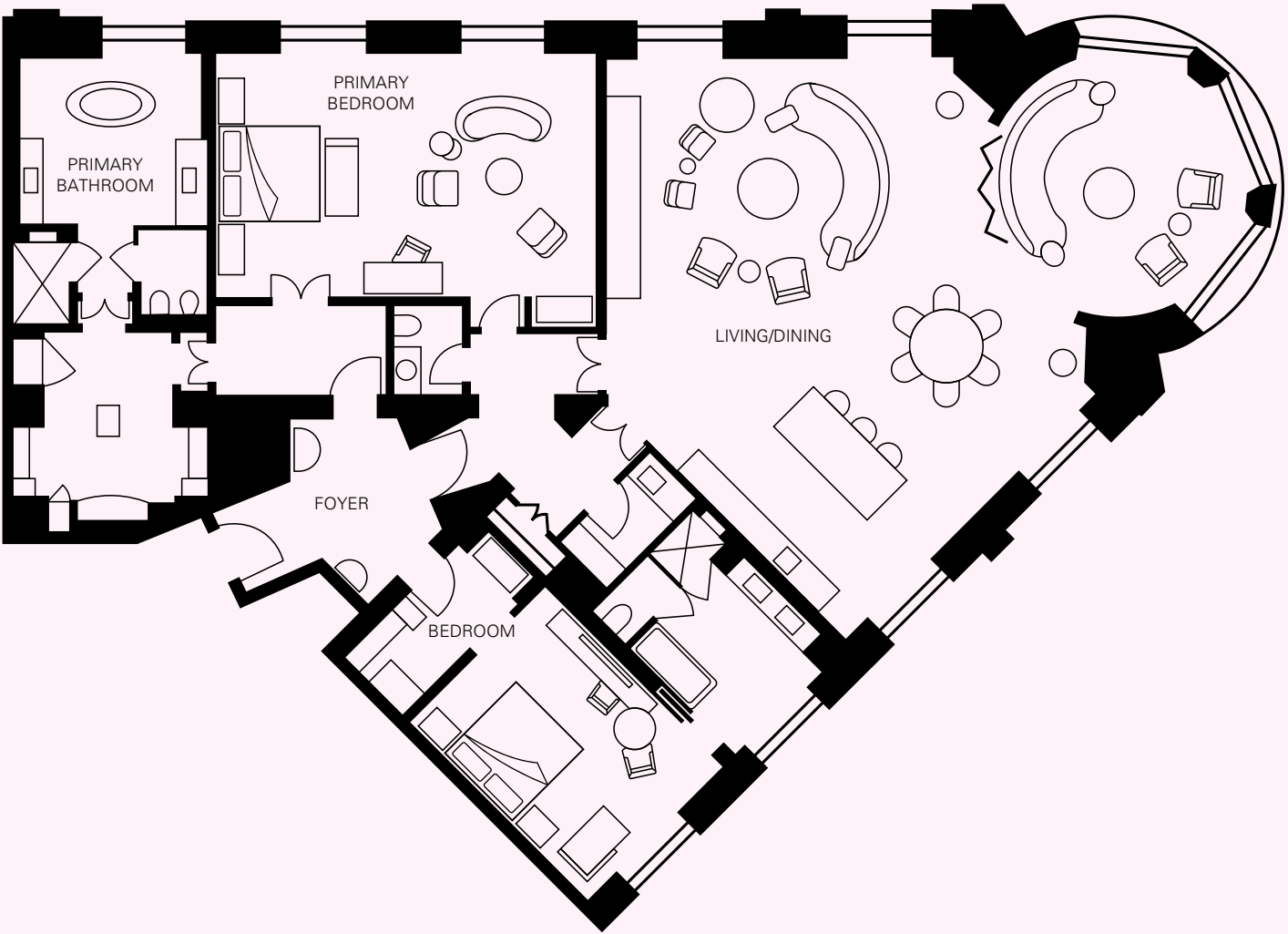
- Two full marble bathrooms with two vanity sinks, tub and separate shower
- Guest powder room

UNIQUE FEATURES

- Formal entrance foyer
- Living room with three sitting areas
- Dining table and high table with stools
- Primary bedroom with sitting area, dressing room and light-filled bath
- Daily American breakfast included for up to four guests
- Complimentary luggage packing and unpacking (max. 1 hour each)

[< BACK TO PRESIDENTIAL
TWO-BEDROOM SUITE OVERVIEW](#)

[LEARN MORE ON
FOURSEASONS.COM >](#)





ROYAL SUITE

With an atmosphere of stately elegance, our one-bedroom Royal Suite is a palatial apartment with double-height ceilings. Historical details include ornate ceiling mouldings, marble casings and intricately patterned stone floors. Set on the second floor within the building's distinctive triangular point, this expansive suite includes a private study, exercise room, full kitchen and a mirrored dressing room – making it Madrid's ultimate retreat for entertaining or luxurious living.

AT A GLANCE

🛏 ONE KING BED

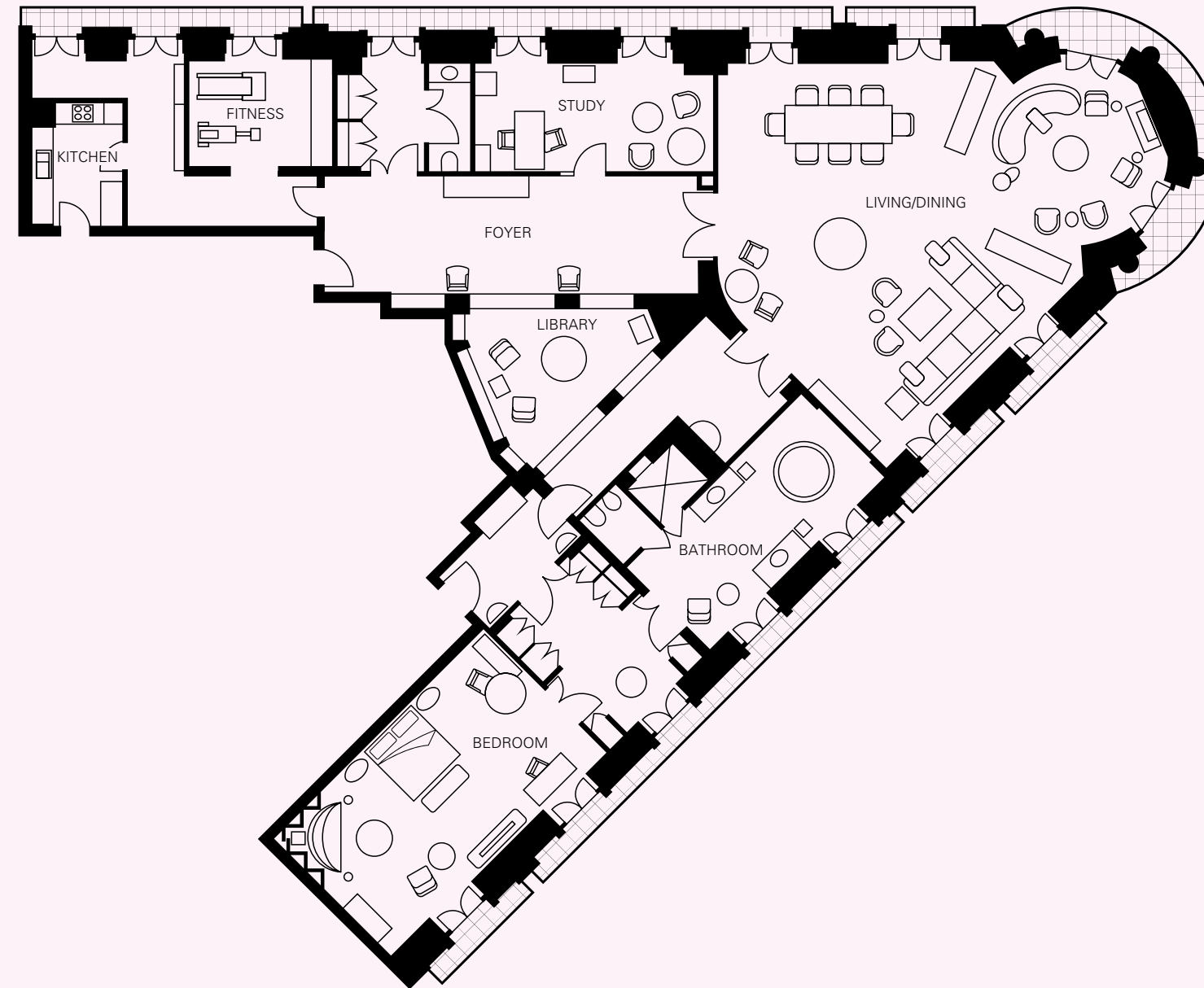
🏠 400 m² (4,305 SQ. FT.)

👥 3 GUESTS, INCLUDING
UP TO 2 CHILDREN

[VIRTUAL TOUR >](#)

[FLOOR PLAN
AND DETAILS >](#)





ROYAL SUITE

FLOOR PLAN AND DETAILS

LOCATION

2nd floor

VIEWS

Facing Calle de Alcalá or Calle de Sevilla

SIZE

400 m² (4,305 sq. ft.)

BEDS

One king bed, with one rollaway on request

BATHROOM

- One full marble bathroom with two vanity sinks, circular tub and separate oversized shower
- Guest powder room

UNIQUE FEATURES

- Formal entrance foyer
- Grand living room with two seating areas and a dining table for eight
- Juliet balconies surrounding the suite
- Full kitchen
- Private study
- Exercise room
- Mirrored dressing room
- Daily American breakfast included for two guests
- Option for connecting guest room
- Complimentary luggage packing and unpacking (max. 1 hour each)

[< BACK TO ROYAL SUITE OVERVIEW](#)

[LEARN MORE ON
FOURSEASONS.COM >](#)



PUERTA DEL SOL *TWO-BEDROOM SUITE* WITH TERRACES

Our Family and Friends Suites are perfect for larger groups of travellers. Multiple adjoining bedrooms provide everyone with personal comfort and privacy. This two-bedroom suite brings everyone together with a charming living room and two of our finest terraces – ideal for outdoor dining and relaxation.

AT A GLANCE

🛏 TWO KING BEDS

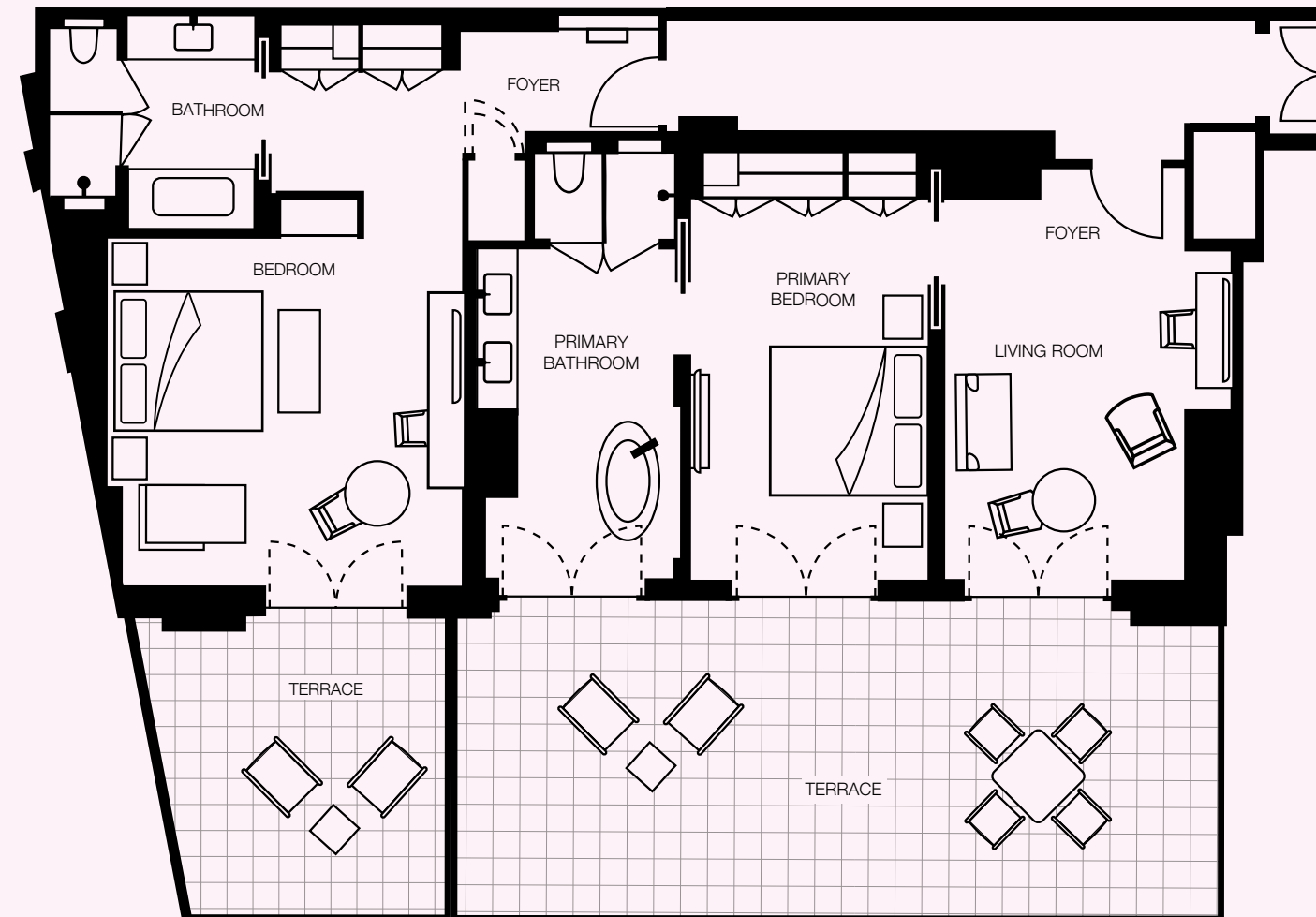
📏 115.2 m² (1,240 SQ. FT.)

👥 6 GUESTS, INCLUDING
UP TO 4 CHILDREN

[VIRTUAL TOUR >](#)

[FLOOR PLAN AND DETAILS >](#)





PUERTA DEL SOL TWO-BEDROOM SUITE WITH TERRACES

FLOOR PLAN AND DETAILS

LOCATION

5th floor

VIEWS

Carrera de San Jerónimo and Puerta del Sol

*Room layouts in these suites may differ.
Each suite presents its own distinctive view.*

SIZE

115.2 m² (1,240 sq. ft.)

BEDS

Two king beds and one sofabed,
with a rollaway on request

BATHROOM

Two full marble bathrooms, each with
two vanity sinks, tub and shower

UNIQUE FEATURES

- Formal entrance foyer
- Separate living area with desk
- Dining table
- Two private furnished terraces
- Daily American breakfast included for up to six guests

[< BACK TO PUERTA DEL SOL TWO-BEDROOM SUITE WITH TERRACES OVERVIEW](#)

[LEARN MORE ON
FOURSEASONS.COM >](#)



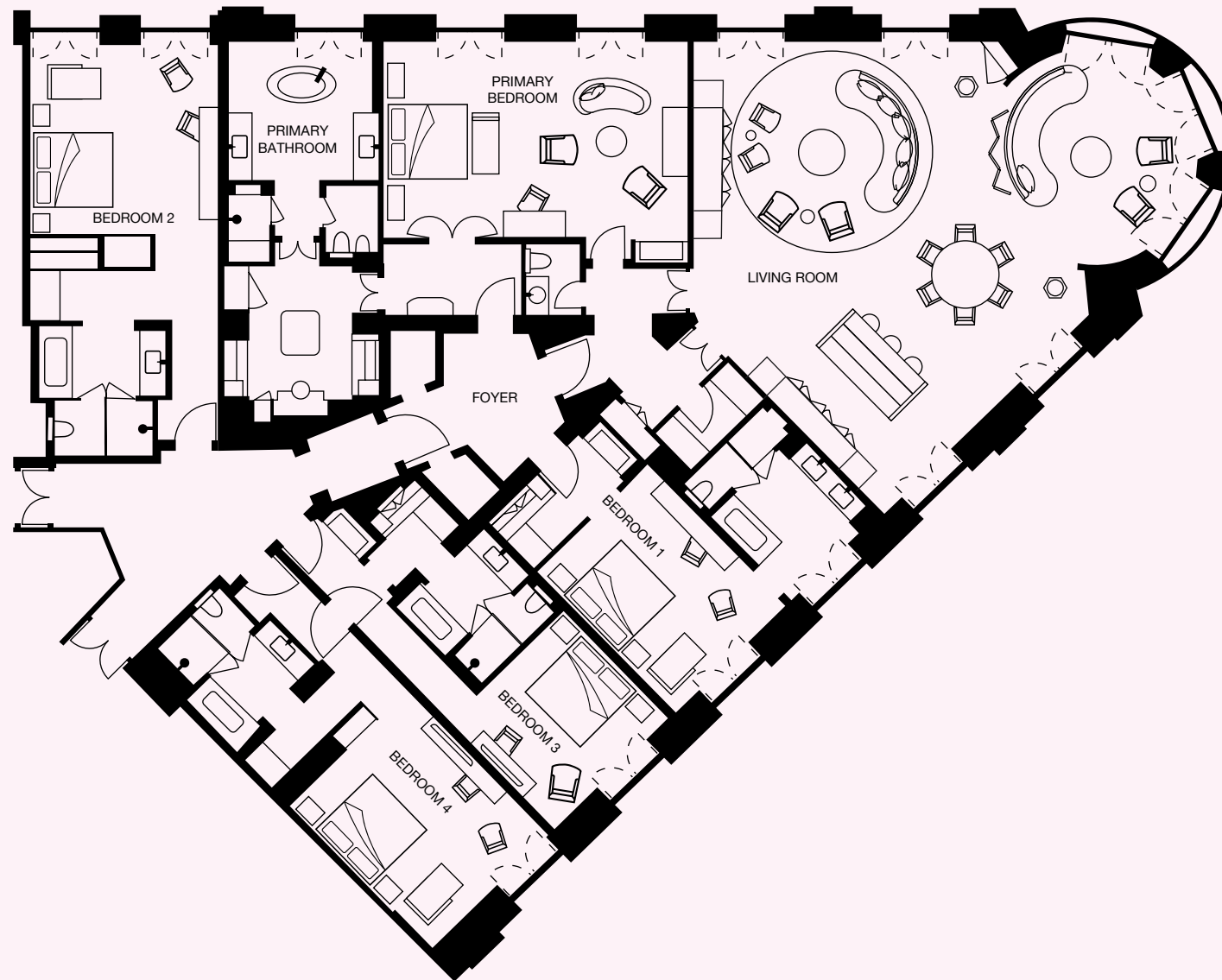
PRESIDENTIAL FIVE-BEDROOM SUITE

This five-bedroom sanctuary begins with the Presidential Two-Bedroom Suite, seamlessly connected to three adjoining guest rooms. All your guests can share the suite's lavish living areas, including three sitting areas and a large dining table. Cool contemporary furniture combines with classic antiques and original architectural features, ensuring an unforgettable Madrid experience.

AT A GLANCE

- FIVE KING BEDS
- 453.4 m² (4,880 SQ. FT.)
- 12 GUESTS, INCLUDING UP TO 11 CHILDREN

[VIRTUAL TOUR >](#)[FLOOR PLAN
AND DETAILS >](#)



PRESIDENTIAL FIVE-BEDROOM SUITE

FLOOR PLAN AND DETAILS

LOCATION

5th floor

VIEWS

Facing both Calle de Alcalá and Calle de Sevilla

SIZE

453.4 m² (4,880 sq. ft.)

BEDS

Five king beds, with two rollaways on request

BATHROOM

- Five full marble bathrooms, each with two vanity sinks, tub and shower
- Guest powder room

UNIQUE FEATURES

- Formal entrance foyer
- Main living room with three sitting areas
- Dining table and bar area with stools
- Primary bedroom with sitting area, dressing room and boutique-style wardrobe
- Daily American breakfast included for up to 10 guests
- Complimentary luggage packing and unpacking (max. 1 hour each)

[< BACK TO PRESIDENTIAL
FIVE-BEDROOM SUITE OVERVIEW](#)

[LEARN MORE ON
FOURSEASONS.COM >](#)





INDULGE

Embark on a complete culinary journey at Four Seasons Hotel Madrid, where our collection of three restaurants and lounges offers a Michelin-starred dining experience, serving traditional Spanish cuisine and exquisite Asian specialties.

[VIEW OUR MENUS ON
FOURSEASONS.COM >](#)



EL PATIO

Snacks and Sweets

Our majestic lobby lounge provides the perfect Madrid meeting place, where you can relax over coffee or cocktails and enjoy delicious cuisine. The setting is the original banking hall of the Banco Español de Crédito.



ISA RESTAURANT & COCKTAIL BAR

Asian Cuisine and Signature Cocktails

Savour modern Asian street food in this lively restaurant and award-winning cocktail bar, offering a tempting selection of sakes, wines and unique cocktails.



DANI BRASSERIE

Andalusian and Spanish Cuisine

Perched above the city with an impressive seventh-floor terrace, this dynamic brasserie is the creation of celebrity Chef Dani García. Discover Michelin-starred dishes, alongside casual Spanish and international cuisine.





IMMERSE

Experience our four-level wellness centre – the largest in Madrid – with eight spacious treatment rooms, including a luxurious sanctuary especially for couples. Complete your journey with a visit to the renowned Rossano Ferretti Hair Spa, creator of the revolutionary invisible cut.



Plan a morning workout with the latest equipment for cardio and strength training, along with yoga classes outdoors on the terrace.

Find tranquillity in our 14-metre (46-foot) pool – feeling like a secret rooftop resort. After your swim, relax outside on the eighth-floor sun terrace, or warm up in our steam rooms and saunas. Immerse in the rest and rejuvenation of Four Seasons Hotel Madrid.

[VIEW TREATMENT MENUS
ON \[FOURSEASONS.COM\]\(#\) >](#)





DESIGN THE *PERFECT* STAY

If you have questions about our suites or if you wish to begin planning your stay, please contact our reservations team.



The Four Seasons App



Facebook Messenger:
Four Seasons Hotel Madrid



Text or WhatsApp [+34 910 88 33 33](tel:+34910883333)

Four Seasons Hotel Madrid
Calle de Sevilla, 3
Madrid, 28014 Spain

T. [+34 910 88 01 88](tel:+34910880188)

Email: reservations.madrid@fourseasons.com



[FOURSEASONS.COM/MADRID](https://www.fourseasons.com/madrid)

