



**CHURCHILL CLUB**

**m e n u**



# CHURCHILL'S COCKTAILS

<b>IMPROVED WHISKEY SOUR</b> Bourbon, Lychee Liqueur, Lemon Juice, Egg White	<b>65</b>
<b>PENELOPE CRUZ</b> Silver Tequila, St Germain, Lemon Juice, Soda Water	<b>90</b>
<b>HANKY PANKY</b> Gin, Sweet Red Italian Vermouth, Fernet Branca	<b>85</b>
<b>FOG CUTTER</b> Black Rum, Cinnamon Syrup, Falernum, Grapefruit, Orange Juice, Lime Juice	<b>75</b>
<b>LAVANDER HOLIFIELD</b> White Rum, Lavander Syrup, Lime Juice	<b>65</b>
<b>BOULEVARDIER</b> Campari, Sweet Vermouth, Rye Whisky	<b>75</b>
<b>AMERICANO</b> Campari, Sweet Vermouth, Soda Water	<b>60</b>

# WINES BY THE GLASS | BOTTLE

## SPARKLING

	GLASS	BTL
PROSECCO ZONIN 1821	70	375
TAITTINGER CHAMPAGNE BRUT	135	810
TAITTINGER CHAMPAGNE PRESTIGE ROSÉ	230	1.380

## WHITE

ALOIS LAGEDER PINOT GRIGIO Italy	90	450
BENI DI BATASIOLO, GAVI DI GAVI, GRANÉE CORTESE Italy	75	375
PANAMERA, CALIFORNIA CHARDONNAY USA	65	325
PASCAL JOLIVET, ATTITUDE SAUVIGNON BLANC France	80	375

## ROSÉ

DOMAINES OTT, CHÂTEAU ROMASSAN BANDOL GRENACHE ROSÉ France	105	525
--	-----	-----

## RED

	GLASS	BTL
<b>ROCCA DELLE MACIÈ, CHIANTI CLASSICO SANGIOVESE BLEND</b> Italy	80	350
<b>ZUCCARDI SERIE A, MENDOZA MALBEC</b> Argentina	65	325
<b>ST. HALLETT FAITH, BAROSSA SHIRAZ</b> Australia	105	525
<b>WILD ROCK PINOT NOIR</b> New Zeland	90	450

## SWEET

	GLASS	BTL
<b>ESSENSIA, ORANGE BLOSSOM, CALIFORNIA MUSCAT</b> USA	100	580

# FOOD SELECTION

## BITES

<b>EDAMAME</b>   Togarashi & Sea Salt (V) (G)	<b>25</b>
<b>SPINACH GOMA AE</b>   Sesame Dressing (V) (G)	<b>40</b>
<b>MUSHROOM TARTINE</b>   Pickled Honshimeji Mushrooms Mirin Duxelle, Nori Dust (V)	<b>45</b>
<b>MALDIVIAN TUNA POKE</b>   Yuzu-Shriracha, Avocado Purée (N)	<b>85</b>
<b>SHRIMP &amp; AVOCADO TOAST</b>   Tomato Confit, Radish Dried Olive	<b>60</b>
<b>COLD VERMICELLI SALAD</b>   Nam Prik, Crushed Peanut Crispy Vegetables (V) (G) (N)	<b>45</b>
<b>WASABI GINGER SALMON TARTARE</b>   Sesame Aioli Cucumber (N)	<b>75</b>

## LUNA SUSHI ROLLS

<b>UNAGI</b>   Teriyaki Glazed Eel, Cream Cheese, Avocado	<b>55</b>
<b>SPICY TUNA</b>   Maldivian Tuna, Cucumber, Radish, Spicy Mayo	<b>50</b>
<b>WASABI SALMON</b>   Yamagobo, Wasabi Mayo	<b>45</b>
<b>CRIPSPY CRAB</b>   Tempura Soft Shell Crab, Teriyaki, Avocado	<b>70</b>

4

(V): Vegetarian (N): Contains nuts (G): Gluten free

Please inform us of any food allergy at the time of order.

All prices are in U.A.E. Dirhams, inclusive of 10% service charge and are subject to 10% DIFC fee

## BUNS & SHELLS

<b>DUCK CONFIT BAO BUN</b> Hoisin, Pickled Vegetables	<b>55</b>
<b>SHORT RIB BAO BUN</b> BBQ Short Rib, Pickled Vegetables	<b>60</b>
<b>KOREAN SALMON TACOS</b> Go Chu Jang, Yuzu-Lemongrass Aioli (v)	<b>60</b>
<b>EMPANADA BARBACOA</b> Smoked Beef Brisket, Pickled Sweet Peppers	<b>70</b>
<b>BEEF SLIDERS</b> Glazed Onion, Manchego, Avocado	<b>95</b>

## DUMPLINGS

<b>YELLOW CHILI CHICKEN GYOZA</b> Onion Ponzu Sauce	<b>60</b>
<b>CHICKEN AND PRAWN</b> Chinese Chive	<b>60</b>
<b>SPINACH &amp; VEGETABLE</b> Ponzu	<b>50</b>
<b>CRYSTAL SHRIMP</b> Onion Ponzu	<b>70</b>

5

(V): Vegetarian (N): Contains nuts (G): Gluten free

Please inform us of any food allergy at the time of order.

All prices are in U.A.E. Dirhams, inclusive of 10% service charge and are subject to 10% DIFC fee

## HOT

<b>CRISPY CALAMARI</b> Sweet Chili, Citrus	<b>55</b>
<b>CHIFA STYLE CHICKEN WINGS</b> Sweet Soy, Quinoa, Peanut (N)	<b>60</b>
<b>CHAR SIU VEAL RIBS</b> BBQ Glaze, Sesame Seed	<b>75</b>
<b>NASI GORENG</b> Shrimp & Chili Indonesian Fried Rice	<b>40</b>
<b>GRILLED CHICKEN SATAY</b> House Peanut Sambal, Lime	<b>65</b>
<b>CRISPY BEEF ROLL</b> Marinated Beef, Peppers, Wasabi Potato (N)	<b>65</b>
<b>SWEET &amp; SOUR CHICKEN</b> Bell Peppers, Pineapple	<b>75</b>



## SWEET

<b>DARK CHOCOLATE MARQUIS</b> Aerated Chocolate, Nougat (N)	<b>45</b>
<b>VANILLA CHEESECAKE MOCHI</b> Berries	<b>55</b>
<b>GREEN TEA CRÈME BRÛLÉE</b> Pistachio Cake, Tropical Sorbet (N)	<b>45</b>

7

(V): Vegetarian (N): Contains nuts (G): Gluten free

Please inform us of any food allergy at the time of order.

All prices are in U.A.E. Dirhams, inclusive of 10% service charge and are subject to 10% DIFC fee

# PRESTIGE WINE LIST

## CHAMPAGNE

<b>LAURENT PERRIER</b> Pinot Noir - Pinot Meunier - Chardonnay	<b>810</b>
<b>RUINART BRUT NV</b> Pinot Noir - Chardonnay	<b>1.258</b>
<b>CA'DEL BOSCO CUVÉE PRESTIGE</b> Pinot Noir - Chardonnay	<b>1.620</b>
<b>BILLECART SALMON ROSÉ</b> Pinot Noir - Pinot Meunier - Chardonnay	<b>1.782</b>
<b>RUNART ROSÉ</b> Pinot Noir - Chardonnay	<b>1.938</b>
<b>DOM PERIGNON</b> Pinot Noir - Chardonnay	<b>4.436</b>
<b>CRISTAL</b> Pinot Noir - Chardonnay	<b>7.645</b>

## WHITE

<b>BORDEAUX F. MIKULSKI, FRANCE</b> Chardonnay	<b>720</b>
<b>HENRI BOILLLOT, BOURGOGNE, FRANCE</b> Chardonnay	<b>861</b>

<b>DOMAINE VACHERON SANCERRE, FRANCE</b> Sauvignon	<b>1.021</b>
<b>CAKE BREAD, NAPA VALLEY, USA</b> Sauvignon	<b>1.246</b>
<b>TERLANO, WINKL, ITALY</b> Sauvignon Blanc	<b>650</b>

## ROSÉ

<b>M DE MINUTY, FRANCE</b> Chardonnay	<b>364</b>
<b>HENRI FABRE, FRANCE</b> Sémillon	<b>457</b>

## RED

<b>VILLA ANTINORI, ITALY</b> Cabernet Franc - Cabernet Sauvignon	<b>600</b>
<b>PÉTALOS BIERZO, DESC. DE J. PALACIOS, SPAIN</b> Cabernet Sauvignon	<b>880</b>
<b>ROCCA DELLE MACIE, ITALY</b> Cabernet Franc - Cabernet Sauvignon	<b>1529</b>

<b>CRAGGY RANGE LE SOL, N. ZEALAND</b> Syrah	<b>1.837</b>
<b>EMBLEM MICHAEL MONDAVI, USA</b> Cabernet Sauvignon	<b>1.359</b>
<b>BAROLO, LA SPINETTA, ITALY</b> Nebbiolo	<b>3.228</b>

## SWEET

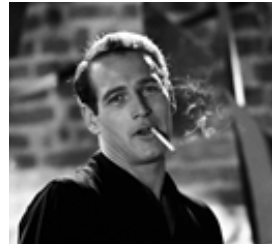
<b>ICEWINE INNISKILLIN, CANADA</b> Riesling	<b>2.592</b>
<b>CHÂTEAU D'YQUIEM SAUTÉRNES, FRANCE</b> Sémillon	<b>4.011</b>



Al Pacino



Clint Eastwood



Marlon Brando



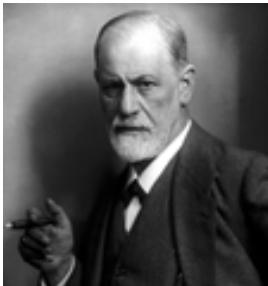
John Kennedy



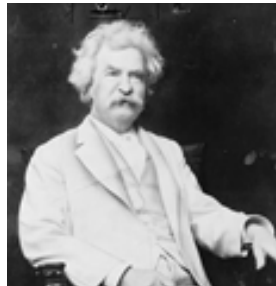
Winston Churchill



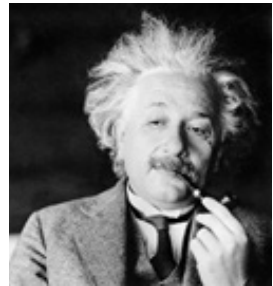
Che Guevara



Sigmund Freud



Mark Twain



Albert Einstein



Alfred Hitchcock



Cary Grant



George Burns



Johnny Depp



Jack Nicholson



Mel Gibson



Nicolas Cage



Daniel Craig



Robert Downey Jr

# CIGARS SELECTION

A. FUENTE OPUS BELICOSOS XX42	570
A. FUENTE ROSADO N.54	154
BOLIVAR BELICOSOS FINOS	161
BOSPHORUS PETIT EDMUNDO	164
COHIBA ESPLENDIDOS	437
COHIBA GENIOS	395
COHIBA ROBUSTOS	261
COHIBA SIGLO I	132
COHIBA SIGLO II	172
H. UPMANN MAGNUM N. 50	195
HOYO DE MONTERREY EPICURE N.2	140
HOYO DE MONTERREY PETIT ROBUSTO	117
HOYO DE MONTERREY HERMOSOS AÑEJADOS	195

<b>MONTECRISTO N. 2</b>	<b>192</b>
<b>MONTECRISTO CHURCHILL AÑEJADOS</b>	<b>385</b>
<b>MONTECRISTO OPEN EAGLE</b>	<b>259</b>
<b>PARTAGAS SERIE D N.4</b>	<b>147</b>
<b>PARTAGAS SERIE E N.2</b>	<b>241</b>
<b>RAMON ALLONES</b>	<b>286</b>
<b>ROMEO Y JULIETA WIDE CHURCH</b>	<b>190</b>

## **LIMITED EDITIONS**

<b>TRINIDAD TOPES 2016</b>	<b>497</b>
----------------------------	------------



# DAVIDOFF

DAVIDOFF ESCURIO ROBUSTO TUBOS	229
DAVIDOFF ESCURIO PETIT ROBUSTO	120
DAVIDOFF N.2 TUBO'S	262
DAVIDOFF NICARAGUA TORO	247
DAVIDOFF WINST CHURCH STATESMAN	252
DAVIDOFF WINST CHURCH ARISTOCRAT	290
DAVIDOFF WINST CHURCH PETIT BELICOSOS	92
DAVIDOFF YEAR OF THE MONKEY	465
DAVIDOFF YEAR OF ROOSTER	488

## LOWLAND MALTS

	GLS 4CL	BTL
AUCHENTOSHAN 12YO	105	1.800
AUCHENTOSHAN 18YO	255	4.750
AUCHENTOSHAN TRPL W.	135	2.350

## HIGHLAND MALTS

ABERFELDY 12YO	90	1.570
ABERFELDY 21YO	265	5.250
CLYNELISH 14YO	120	2.250
DALMORE 12YO	125	1.950
DALMORE 15YO	155	2.750
DALMORE CIGAR MALT	195	3.500
DALMORE 18YO	285	5.400
DALMORE KING ALEX III	370	6.650
GLENMORANGIE ORIGINAL	85	1.450
GLENMORANGIE QR	115	1.950
GLENMORANGIE LASANTA	115	1.950
GLENMORANGIE NECTAR D'OR	125	2.250
OBAN 14YO	165	3.450
OLD PUTENEY 12YO	80	1.400
OLD PUTENEY 17YO	155	2.950
OLD PUTENEY 21YO	210	4.150

# SPEYSIDE MALTS

	GLS 4CL	BTL
ABERLOUR A'BUNADH	195	3.550
BALVENIE 21YO	375	7.650
GLENFIDDICH 12YO	75	1.550
GLENFIDDICH 15YO	90	1.800
GLENFIDDICH 18YO	130	2.750
GLENGRANT 10YO	75	1.300
GLENFARCLAS '105'	115	1.950
GLENFARCLAS 15YO	125	2.200
GLENFARCLAS 25YO	245	4.450
GLENFARCLAS 40YO	615	11.600
GLENLIVET 12YO	75	1.650
GLENLIVET 15YO	115	2.150
GLENLIVET 18YO	165	2.850
GLENLIVET 21YO	385	6.850
GLENLIVET 25YO	650	11.350
GLENROTHES SLCT RSRV	110	1.850
GLENROTHES 1975	1.400	23.200

15 All prices are in U.A.E. Dirhams, inclusive of 10% service charge and are subject to 10% DIFC fee

	GLS 4CL	BTL
MACALLAN 12YO	105	1.950
MACALLAN 15YO	165	3.750
MACALLAN 18YO	295	5.350
MORTLACH RARE OLD	245	3.150
SINGLETON 12YO	95	1.700
SINGLETON 15YO	105	1.800
STRATHISLA 12YO	120	2.150

## ISLAND MALTS

HIGHLAND PARK 12YO	80	1.400
HIGHLAND PARK 18YO	185	3.450
HIGHLAND PARK 25YO	840	14.650
HIGHLAND PARK 30YO	1.370	23.900
LEDAIG 10YO	70	1.250
TALISKER 10YO	80	1420

## CAMPELTOWN MALTS

SPRINGBANK 10YO	115	1.950
SPRINGBANK 21YO	475	8.650

## JURA MALTS

	GLS 4CL	BTL
JURA ORIGIN 10YO	75	1.400
JURA SUPERSTITION	85	1.300
JURA ORIGIN 16YO	170	3.100
JURA PROPHECY	195	3.500
JURA 21YO	270	5.250

## ISLAY MALTS

ARDBEG 10YO	90	1.500
ARDBEG UIGEADAIL	120	2.150
ARDBEG CORRYVRECKAN	120	2.050
BRUICHLADDICH P. CHARL.	135	2.450
BRUICHLADDICH CLASS L.	125	2.100
BRUICHLADDICH OCTOMORE	365	6.950
BUNNAHABHAIN 25YO	735	14.250
CAOL ILA 12YO	115	1.900
LAGAVULIN 16YO	185	3.950
LAPHROAIG 10YO	70	1.350
LAPHROAIG QUARTER CASK	85	1.500

## BOUTIQUE BLENDS

	GLS 4CL	BTL
GREAT KING STREET BLENDED	80	1.050
SPICE TREE BLENDED	95	1.600
WEYMISS THE HIVE	85	1.450
WEYMISS THE SPICE KING	85	1.450
WEYMISS THE PEAT CHIMNEY	85	1.450

## BLENDED WHISKY

CHIVAS REGAL 12YO	70	1.650
CHIVAS REGAL 18YO	145	2.850
FAMOUS GROUSE	50	850
BLACK GROUSE	55	850
J&B RARE	55	950
J&B RESERVE	65	1.400
JOHNNIE WALKER RED LBL	60	850
JOHNNIE WALKER BLACK LBL	65	1.450
JOHNNIE WALKER BLUE LBL	345	6.050
JOHNNIE WALKER PLATINUM LBL	185	4.150
ROYAL SALUTE 21YO	320	5.400
ROYAL SALUTE DIAMOND TRIBUTE	575	10.600
ROYAL SALUTE 38YO	1.800	19.900
MONKEY SHOULDER	80	1.400

## IRISH MALTS & PURE POT STILL

	GLS 4CL	BTL
BUSHMILLS ORIGINAL	55	1.050
BUSHMILLS BLACK BUSH	60	1.200
JAMESON	60	1.250
MIDDLETON VERY RARE	315	5.200

## JAPANESE WHISKY

NIKKA BLEND	75	1.350
NIKKA DATE	155	2.800
NIKKA PURE MALT RED	105	1.400
NIKKA PURE MALT WHITE	105	1.400
NIKKA PURE MALT BLACK	105	1.400
HIBIKI HARMONY	105	2.050
SUNTORY KAKUBIN	60	975
SUNTORY CHICHIBU	280	4.950
SUNTORY THE CHITA	145	2.650
OLD SUNTORY	115	2.100
SPEC. RES. SUNTORY	125	2.200
ROYAL SUNTORY	135	2.300

## INTERNATIONAL MALTS

	GLS 4CL	BTL
SULLIVAN'S COVE	205	3.550

## AMERICAN WHISKY

BAKER'S BOURBON	105	1.950
BULLEIT RYE WHISKY	65	1.500
BULLEIT BOURBON	55	1.100
BUFFALO TRACE	70	1.300
EVAN WILLIAM'S SGL B.	65	1.250
JACK DANIEL'S	70	1.250
GENTLEMAN JACK	85	1.650
JACK DANIEL'S SGL B.	110	1.950
JIM BEAM	55	850
JIM BEAM BLACK	60	950
KNOB CREEK	70	1.050
MAKER'S MARK	65	1.350
WOODFORD RESERVE	75	1.150



# CANADIAN WHISKY

	GLS 4CL	BTL
CANADIAN CLUB	55	850
CROWN ROYAL	55	950

## RUM

ANGOSTURA 5Y	55	850
ANGOSTURA 1824	190	3.250
ANGOSTURA 1919	80	1.450
APPLETON ESTATE 12YO	85	1.600
CLÉMENT VSOP	85	1.400
CLÉMENT VERY OLD 10YO	120	2.400
DIPLOMATICO RESERVA	145	2.750
EL DORADO 15YO	115	2.400
FACUNDO EXIMO	175	2.950
FLOR DE CANA 25YO	205	4.050
GOSLING'S BL. SEAL	60	1.050
KRAKEN	60	850
MATUSALEM RSRV 15YO	75	1.200
PYRAT XO	80	1.450
PLANTATION XO	165	2.850
SAILOR JERRY	50	850
S. TERESA SELECTO	80	1.450
ZACAPA 23YO	120	2.250

## COGNAC/BRANDY

	GLS 4CL	BTL
RÉMY CLUB	145	2.850
RÉMY XO	265	5.750
RÉMY VSOP	105	2.150
RÉMY LOUIS XIII	2.650	46.000
COURVOISIER VSOP	105	1.850
COURVOISIER XO	245	5.450
HENNESSY VS	70	1.200
HENNESSY VSOP	95	1.850
MARTELL VSOP	110	1.900
MARTELL CORDON BLEU	215	3.800

## TEQUILA

1800 AÑEJO	60	1.050
7 LEGUAS BLANCO	235	3.850
7 LEGUAS REPOSADO	250	4.000
7 LEGUAS AÑEJO	275	4.350
ARETTE BLANCO	105	1.825
ARETTE REPOSADO	115	1.925
CHAMUCOS BLANCO	275	4.500

	GLS 4CL	BTL
DON JULIO BLANCO	90	1.950
DON JULIO REPOSADO	110	2.350
DON JULIO AÑEJO	125	2.600
DON JULIO 1942	295	6.500
HERRADURA PLATA	65	1.150
HERRADURA REPOSADO	80	1.450
HERRADURA AÑEJO	90	1.550
MAESTRO DOBEL DIAMOND	185	3.250
OCHO BLANCO	80	1.500
OCHO REPOSADO	85	1.600
OCHO AÑEJO	240	3.900
TAPATIO BLANCO	105	1.350
TAPATIO REPOSADO	110	1.450
DEL MAGUEY CREMA DE MEZCAL	80	1.450
DEL MAGUEY CHICHICAPA	145	2.750
ILEGAL REPOSADO MEZCAL	215	3.250

