

THE SUITE COLLECTION

ELEVATE YOUR EXPERIENCE

DISCOVER OUR SUITES >



FOUR SEASONS
HOTEL
DENVER



WELCOME

PREMIER STUDIO

view floor plan

FOUR SEASONS
EXECUTIVE SUITE

view floor plan

ONE-BEDROOM SUITE

view floor plan

PREMIER
ONE-BEDROOM SUITE

view floor plan

PRESIDENTIAL SUITE

view floor plan

SUITE AMENITIES

MAKE YOUR SUITE PLANS

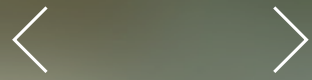


FOUR SEASONS
HOTEL
DENVER

DOWNTOWN DENVER'S ELITE ACCOMMODATIONS

With inspiring corner views of the Rocky Mountains or the downtown skyline, the suites of Four Seasons Hotel Denver capture the spirit of Colorado with sleek modern design and natural warmth in stone and wood. Connecting up to three bedrooms, our suites feature spacious living areas, corner fireplaces, two spectacular bathrooms and extensive closet space. Legendary Four Seasons service creates an experience of confidence, comfort, and total peace of mind.





WELCOME

PREMIER STUDIO

view floor plan

FOUR SEASONS
EXECUTIVE SUITE

view floor plan

ONE-BEDROOM SUITE

view floor plan

PREMIER
ONE-BEDROOM SUITE

view floor plan

PRESIDENTIAL SUITE

view floor plan

SUITE AMENITIES

MAKE YOUR SUITE PLANS



FOUR SEASONS
HOTEL
DENVER



PREMIER STUDIO

Our most popular choice, this smartly designed layout offers a spacious atmosphere and panoramic view of the city. Relax in comfort when stepping onto the warmth of the heated tile floor from your window-side tub.

[ROOM DETAILS AND FLOOR PLAN >](#)



WELCOME

PREMIER STUDIO

view floor plan

FOUR SEASONS
EXECUTIVE SUITE

view floor plan

ONE-BEDROOM SUITE

view floor plan

PREMIER
ONE-BEDROOM SUITE

view floor plan

PRESIDENTIAL SUITE

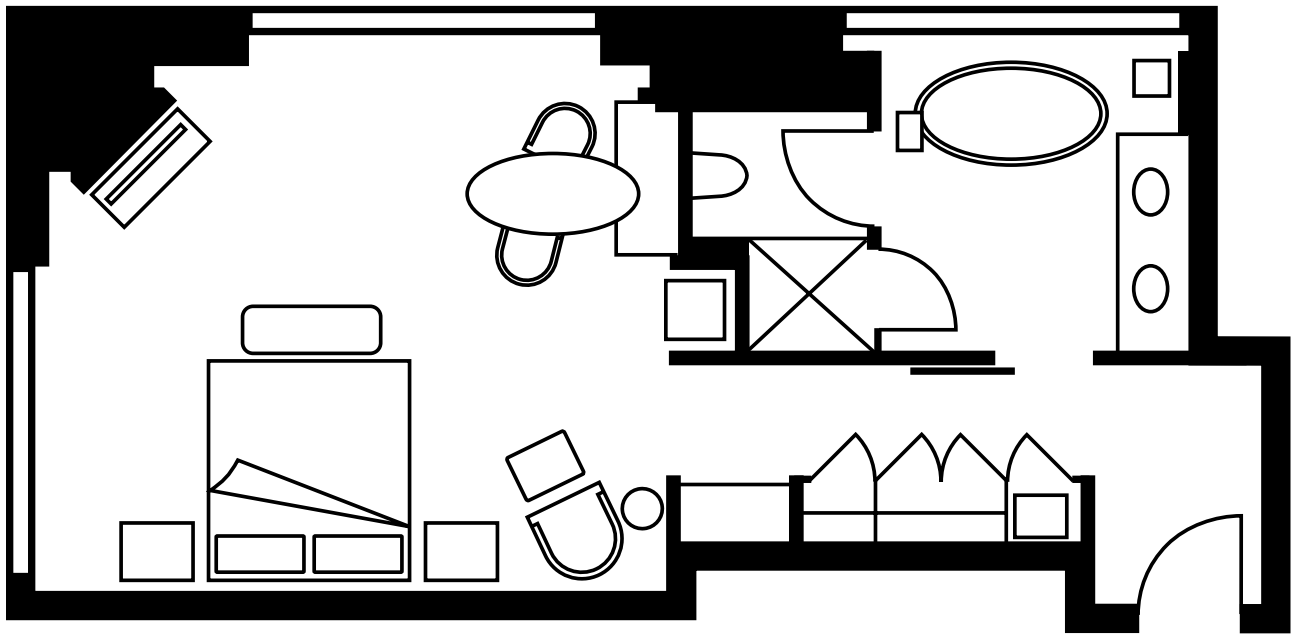
view floor plan

SUITE AMENITIES

MAKE YOUR SUITE PLANS



FOUR SEASONS
HOTEL
DENVER



[VIEW SUITE AMENITIES >](#)

SIZE

- 485 to 500 sq. ft. (45 to 47 m²)
- May connect to a Deluxe Room with a king bed or two double beds, offering up to 985 sq. ft. (92 m²)

NUMBER OF ROOMS

- 35

LOCATION

- On the 4th to 16th floors

OCCUPANCY

- 3 adults, or 2 adults and 1 child

VIEWS

- Downtown and/or mountain; many rooms on higher floors overlook the skyline

LIVING/SLEEPING AREA

- Formal entrance foyer
- King-sized signature Four Seasons Bed

- Oversized floor-to-ceiling windows with blackout curtains
- Shabui stone accent walls
- 42-in. (107-cm) flat-screen LCD television
- Lounge chair with ottoman
- Glass-topped writing desk with designer chairs
- Built-in refrigerated private bar
- Nespresso coffee and tea maker
- Abundant closet space

BATHROOM

- Full marble bathroom, including heated tile floor, two vanity sinks, a TV screen hidden within the mirror, private water closet, separate glass-walled rain shower, free-standing soaking tub, and a large tub-side window providing natural light and dramatic views

Learn about our rates and availability on [FOURSEASONS.COM](#) >



WELCOME

PREMIER STUDIO

view floor plan

FOUR SEASONS
EXECUTIVE SUITE

view floor plan

ONE-BEDROOM SUITE

view floor plan

PREMIER
ONE-BEDROOM SUITE

view floor plan

PRESIDENTIAL SUITE

view floor plan

SUITE AMENITIES

MAKE YOUR SUITE PLANS



FOUR SEASONS
HOTEL
DENVER



FOUR SEASONS EXECUTIVE SUITE

With separate areas for living and sleeping, this efficiently designed one-bedroom suite is ideal for business travelers.

ROOM DETAILS AND FLOOR PLAN >



WELCOME

PREMIER STUDIO

view floor plan

FOUR SEASONS
EXECUTIVE SUITE

view floor plan

ONE-BEDROOM SUITE

view floor plan

PREMIER
ONE-BEDROOM SUITE

view floor plan

PRESIDENTIAL SUITE

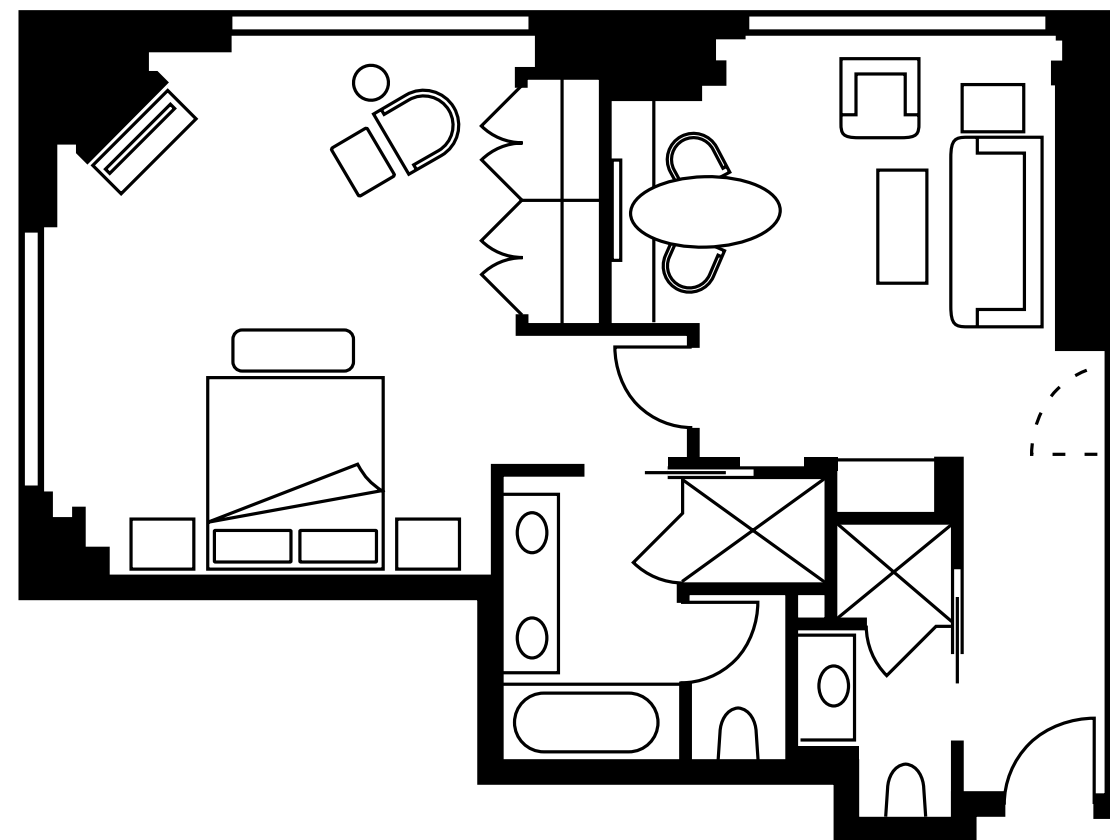
view floor plan

SUITE AMENITIES

MAKE YOUR SUITE PLANS



FOUR SEASONS
HOTEL
DENVER



[VIEW SUITE AMENITIES >](#)

SIZE

- 635 to 700 sq. ft. (59 to 65 m²)
- May connect to a Deluxe Room with a king bed or two double beds, offering up to 1,185 sq. ft. (110 m²)

NUMBER OF SUITES

- 10

LOCATION

- 9th to 13th floors

OCCUPANCY

- 4 adults, or 2 adults and 2 children

VIEWS

- East-facing downtown views

LIVING AREA

- Formal foyer with guest bathroom
- Expansive living room with floor-to-ceiling windows - ideal for entertaining

- Comfortable sitting area, including a pull-out queen-size sofa bed
- Shabui stone accent walls
- 55-in. (140-cm) flat-screen LCD television
- Glass-topped writing desk with designer chairs
- Built-in refrigerated private bar
- Nespresso coffee and tea maker

MASTER BEDROOM

- King-sized signature Four Seasons Bed
- Oversized floor-to-ceiling windows with blackout curtains
- Lounge chair with ottoman
- 50-in. (127-cm) flat-screen LCD television
- Abundant closet space

BATHROOMS

- Full marble bathroom, including two vanity sinks, a TV screen hidden within the vanity mirror, private water closet, separate glass-walled rain shower, and deep soaking waterfall tub
- Three-piece guest bathroom, including free-standing shower

Learn about our rates and availability on [FOURSEASONS.COM](#) >



WELCOME

PREMIER STUDIO

view floor plan

FOUR SEASONS
EXECUTIVE SUITE

view floor plan

ONE-BEDROOM SUITE

view floor plan

PREMIER
ONE-BEDROOM SUITE

view floor plan

PRESIDENTIAL SUITE

view floor plan

SUITE AMENITIES

MAKE YOUR SUITE PLANS



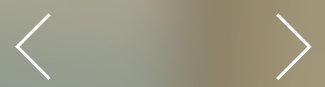
FOUR SEASONS
HOTEL
DENVER



ONE-BEDROOM SUITE

With additional space for relaxing or entertaining, this large corner suite features downtown views with a Rocky Mountain backdrop. Enjoy the scenery from the living room, bedroom and guest bathroom.

[ROOM DETAILS AND FLOOR PLAN >](#)



WELCOME

PREMIER STUDIO

view floor plan

FOUR SEASONS
EXECUTIVE SUITE

view floor plan

ONE-BEDROOM SUITE

view floor plan

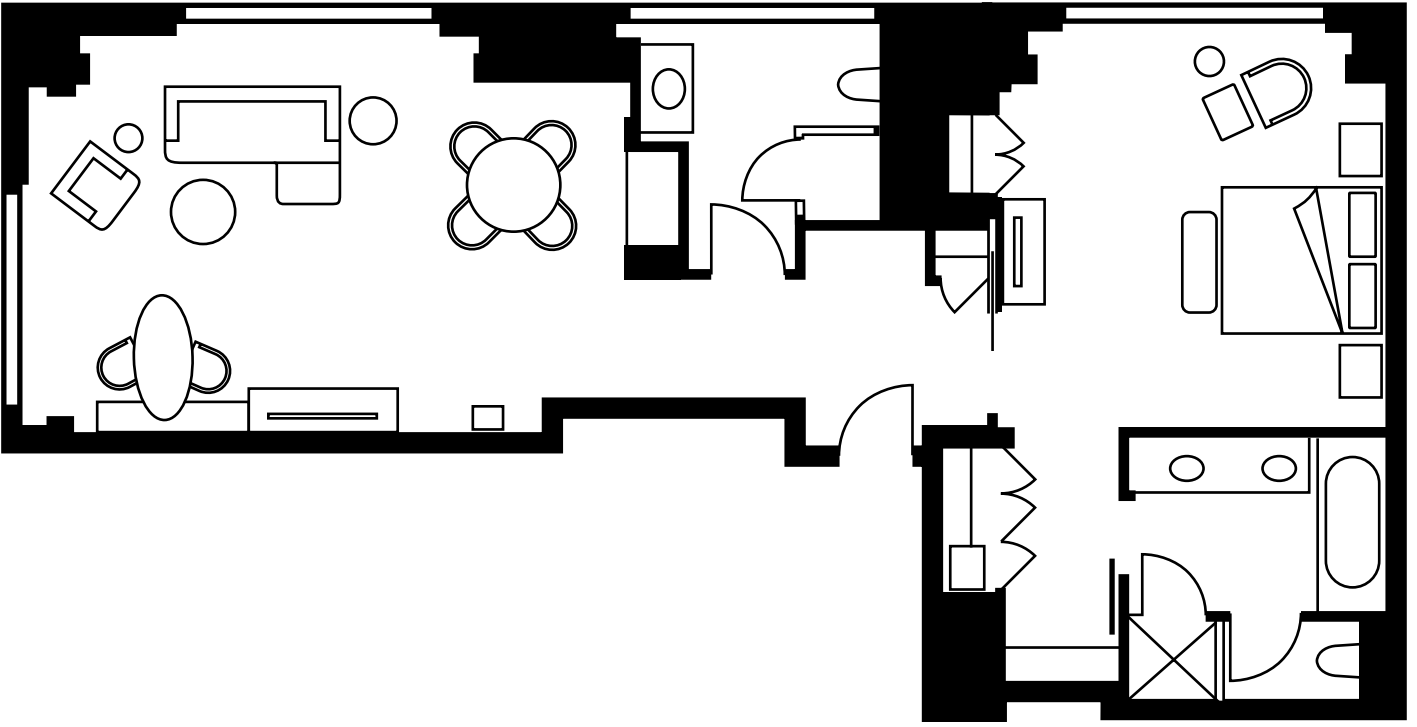
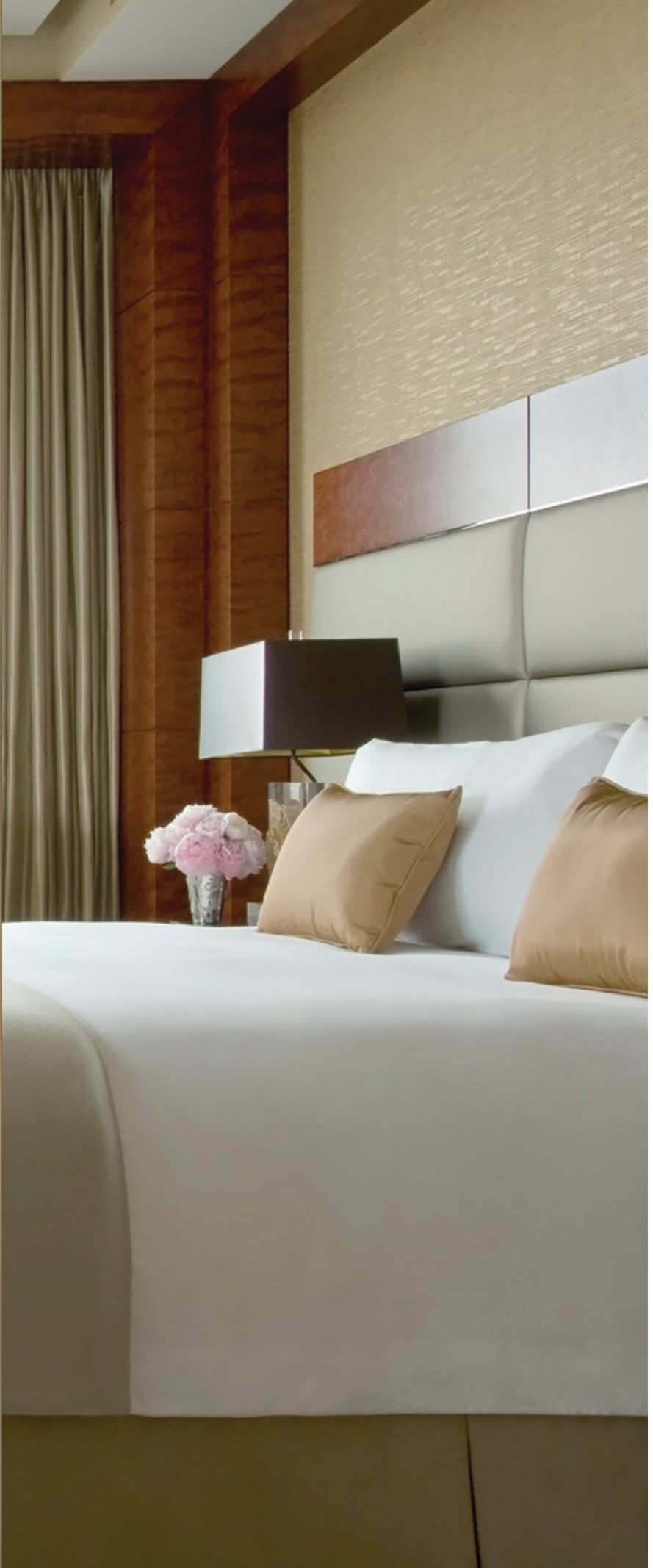
PREMIER
ONE-BEDROOM SUITE

view floor plan

PRESIDENTIAL SUITE

view floor plan

SUITE AMENITIES



[VIEW SUITE AMENITIES >](#)

SIZE

- 910 sq. ft. (85 m²)

NUMBER OF SUITES

- 8

LOCATION

- Corners on the 6th to 13th floors

OCCUPANCY

- 4 adults, or 2 adults and 2 children

VIEWS

- North-facing to the city and mountains

LIVING/DINING AREA

- Formal foyer with coat closet and guest bathroom
- Expansive living room with corner windows – ideal for entertaining
- Comfortable sitting area, including a pull-out queen-size sofa bed
- Glass-topped writing desk with designer chairs
- 55-in. (140-cm) flat-screen LCD television

- Shabui stone accent walls
- Bose sound system
- Dining table for four
- Built-in refrigerated private bar
- Nespresso coffee and tea maker

MASTER BEDROOM

- King-sized signature Four Seasons Bed
- Oversized floor-to-ceiling windows with blackout curtains
- 50-in. (127-cm) flat-screen LED television
- Lounge chair with ottoman
- Abundant storage space, including wardrobe and additional closet

BATHROOMS

- Full marble bathroom, including two vanity sinks, a TV screen hidden within the mirror, private water closet, separate glass-walled rain shower, and deep soaking tub
- Three-piece guest bathroom, complete with glass-enclosed shower, heated tile floor and picture window

Learn about our rates and availability on **FOURSEASONS.COM** [>](#)



WELCOME

PREMIER STUDIO

view floor plan

FOUR SEASONS
EXECUTIVE SUITE

view floor plan

ONE-BEDROOM SUITE

view floor plan

PREMIER
ONE-BEDROOM SUITE

view floor plan

PRESIDENTIAL SUITE

view floor plan

SUITE AMENITIES

MAKE YOUR SUITE PLANS



FOUR SEASONS
HOTEL
DENVER

PREMIER ONE-BEDROOM SUITE

Glamorous and generously spacious for entertaining, this residential-style suite includes a corner fireplace in the living room, a dining table for eight, and a butler's pantry with private service entrance.

[ROOM DETAILS AND FLOOR PLAN >](#)



WELCOME

PREMIER STUDIO

view floor plan

FOUR SEASONS
EXECUTIVE SUITE

view floor plan

ONE-BEDROOM SUITE

view floor plan

PREMIER
ONE-BEDROOM SUITE

view floor plan

PRESIDENTIAL SUITE

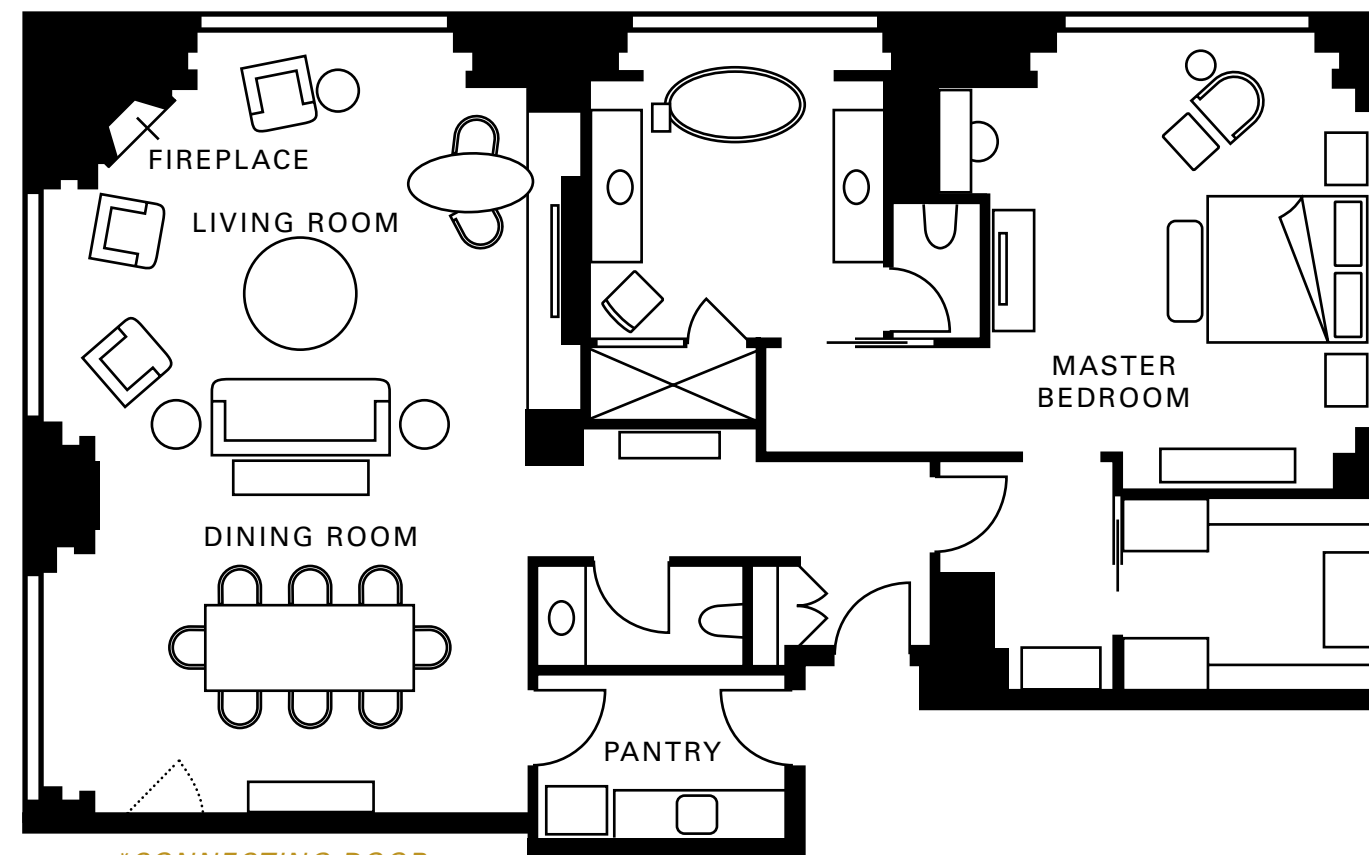
view floor plan

SUITE AMENITIES

MAKE YOUR SUITE PLANS



FOUR SEASONS
HOTEL
DENVER



*CONNECTING DOOR

[VIEW SUITE AMENITIES >](#)

SIZE

- 1,350 sq. ft. (126 m²)

NUMBER OF SUITES

2

LOCATION

- 14th and 15th floors

OCCUPANCY

- 3 adults, or 2 adults and 1 child

VIEWS

- Northwest-facing views of downtown and the Rocky Mountains, showcasing spectacular sunsets

LIVING AREA

- Formal foyer with coat closet and two-piece guest bathroom
- Comfortable sitting area for entertaining
- Shabui stone accent walls
- Corner gas-burning fireplace
- 65-in. (165-cm) flat-screen LCD television
- Glass-topped writing desk with designer chairs
- Bose surround-sound system
- Built-in refrigerated private bar

- Nespresso coffee and tea maker
- Dining table for eight
- Adjoining butler's pantry with full-sized refrigerator, dishwasher, dinnerware and flatware; private service entrance
- Extensive collection of local artwork

MASTER BEDROOM

- King-sized signature Four Seasons Bed
- Oversized floor-to-ceiling windows with blackout curtains
- Lounge chair with ottoman
- Make-up table beside the window
- 50-in. (127-cm) flat-screen LCD television
- Large walk-in closet with abundant storage space

BATHROOMS

- Full marble bathroom, including heated tile floor, two separate vanity sinks with underlit basins, a TV screen hidden within the mirror, private water closet, separate glass-walled rain shower, free-standing soaking tub, and a large tub-side window providing natural light and dramatic views
- Two-piece guest bathroom

Learn about our rates and availability on [FOURSEASONS.COM](https://www.fourseasons.com) >



WELCOME

PREMIER STUDIO

view floor plan

FOUR SEASONS
EXECUTIVE SUITE

view floor plan

ONE-BEDROOM SUITE

view floor plan

PREMIER
ONE-BEDROOM SUITE

view floor plan

PRESIDENTIAL SUITE

view floor plan

SUITE AMENITIES

MAKE YOUR SUITE PLANS



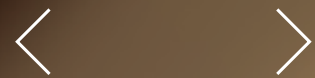
FOUR SEASONS
HOTEL
DENVER



PRESIDENTIAL SUITE

Experience Denver's most impressive hotel suite, offering up to three bedrooms. This residential-style showpiece includes two fireplaces, a grand piano and unparalleled Rocky Mountain Views from anywhere in the suite.

[ROOM DETAILS AND FLOOR PLAN >](#)



WELCOME

PREMIER STUDIO

view floor plan

FOUR SEASONS
EXECUTIVE SUITE

view floor plan

ONE-BEDROOM SUITE

view floor plan

PREMIER
ONE-BEDROOM SUITE

view floor plan

PRESIDENTIAL SUITE

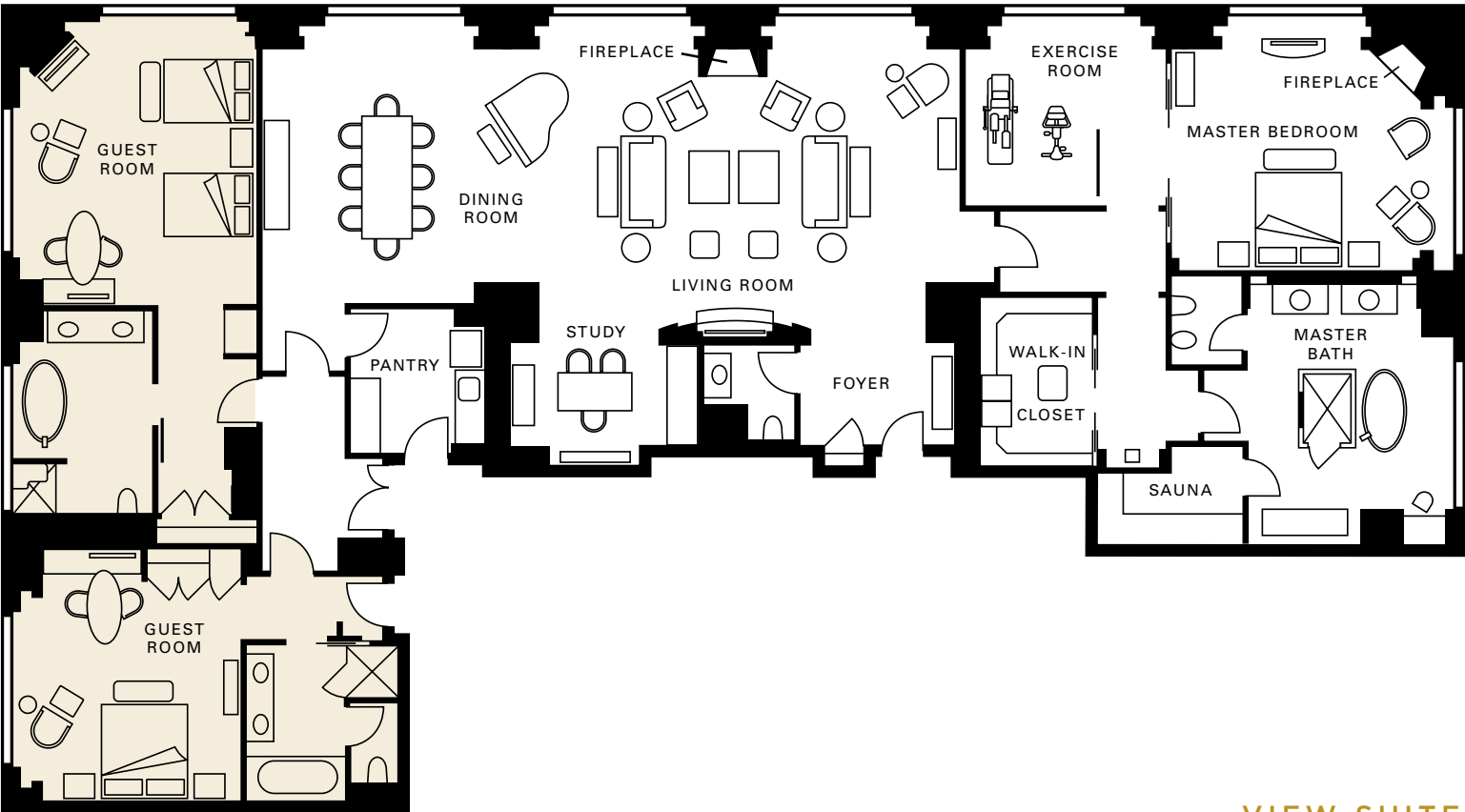
view floor plan

SUITE AMENITIES

MAKE YOUR SUITE PLANS



FOUR SEASONS
HOTEL
DENVER



[VIEW SUITE AMENITIES >](#)

SIZE

- 2,235 sq. ft. (208 m²)
- May connect to one or two additional guest rooms, encompassing a maximum of 3,220 sq. ft. (299 m²)

NUMBER OF SUITES

- 1

LOCATION

- 16th floor

OCCUPANCY

- 2 adults
- May accommodate additional guests with the option of adjoining guest rooms

VIEWS

- Panoramic west-facing views of downtown and the Rocky Mountains, celebrating Denver's 300 days of sunshine

LIVING/DINING AREA

- Formal foyer with coat closet and two-piece guest bathroom
- High 12-ft. (3.7-m) ceilings and oversized windows framing Rocky Mountain views
- Expansive sitting area for entertaining
- Grand piano, gas-burning fireplace and 65-in. (165-cm) flat-screen LCD television
- Shabui stone accent walls
- Sleek dark-wood dining table for eight
- Adjoining butler's pantry with full-sized refrigerator, dishwasher, dinnerware and flatware; private service entrance
- Built-in refrigerated private bar with upgraded refreshments
- Nespresso coffee and tea maker
- Alcove study with executive desk, designer chairs and business amenities
- Bose surround-sound system
- Extensive collection of local artwork

MASTER BEDROOM

- King-sized signature Four Seasons Bed
- Oversized floor-to-ceiling windows with blackout curtains
- 50-in. (127-cm) flat-screen LED television
- Lounge chair with ottoman
- Oversized walk-in closet/dressing room

MASTER BATHROOM

- Immense in size, contemporary in style
- Marble detailing; heated tile floor
- Private water closet with bidet
- Glass wash basins
- LCD TV hidden within vanity mirror
- 360-degree glass-enclosed rain shower
- Oversized soaking tub overlooking the city and mountains
- Western red-cedar sauna

PRIVATE EXERCISE STUDIO

- Upright stationary bicycle and treadmill
- Additional equipment for individual fitness needs, upon request
- Oversized windows with Rocky Mountain views for inspiration

Learn about our rates and availability on [FOURSEASONS.COM](#) >



WELCOME

PREMIER STUDIO

view floor plan

FOUR SEASONS
EXECUTIVE SUITE

view floor plan

ONE-BEDROOM SUITE

view floor plan

PREMIER
ONE-BEDROOM SUITE

view floor plan

PRESIDENTIAL SUITE

view floor plan

SUITE AMENITIES

MAKE YOUR SUITE PLANS



FOUR SEASONS
HOTEL
DENVER



SUITE AMENITIES

GUEST SERVICES

- VIP curbside check-in for additional speed and discretion
- Mobile check-in via Four Seasons App
- Twice-daily housekeeping, including VIP evening turndown service
- 24-hour In-Room Dining
- Complimentary morning coffee and tea service in the lobby
- One-hour pressing, and overnight valet and laundry service
- Complimentary shoeshine service
- Children's amenities, customised depending on age
- Pet amenities with walking and sitting services, on request
- Altitude-accommodating amenities, on request
- Complimentary storage of personal items, until next visit
- 24-hour Concierge services
- Complimentary house car within a three-mile (5-km) radius, including the Cherry Creek area

BED & BATH

- Four Seasons Bed with choice of mattress topper: plush, signature or firm
- Down duvets and pillows
- Hypoallergenic bedding and pillows, on request
- Professional-grade hair dryer
- Thick terry bathrobes
- TV screen hidden within the oversized vanity mirror
- Lighted make-up/shaving mirror
- Full-length dressing mirror
- Bulgari toiletries in the Premier One-Bedroom and Presidential Suites

TECHNOLOGY

- Complimentary high-speed Internet access (wired and wireless); premium upgrade available
- Convenient bedside charging station
- iHome docking station
- Multi-line telephone(s) with voicemail
- DVD player with access to DVD/games library
- Nintendo Wii console with game options, on request
- LCD televisions in living room, bedroom and bathrooms
- All televisions are set up for device streaming

ROOM FEATURES

- Shabui stone accent walls
- Glass-topped writing desk with designer chairs
- Built-in refrigerated private bar
- In-room safe
- Silk-padded hangers
- Iron and ironing board
- Nespresso coffee and tea maker
- Humidifier, on request
- Air ionizer, on request

HOTEL FEATURES

- Third-floor rooftop pool and terrace
- Complimentary 24-hour fitness center
- Full-service spa with 10 treatment rooms
- Full-service hair and nail salons
- 24-hour business center



WELCOME

PREMIER STUDIO

view floor plan

FOUR SEASONS
EXECUTIVE SUITE

view floor plan

ONE-BEDROOM SUITE

view floor plan

PREMIER
ONE-BEDROOM SUITE

view floor plan

PRESIDENTIAL SUITE

view floor plan

SUITE AMENITIES

MAKE YOUR SUITE PLANS



FOUR SEASONS
HOTEL
DENVER



MAKE YOUR SUITE PLANS

Make your suite reservations directly online, or contact us by email or phone to confirm special requests.

RESERVATIONS.DEN@FOURSEASONS.COM

Four Seasons Hotel Denver

1111 14th Street

Denver, Colorado

80202, U.S.A.

T. (303) 389 3300

F. (303) 389 3333

CONNECT WITH US

FOURSEASONS.COM/DENVER



Updated 12/2016 theworkhouse.ca