

# AN ICONIC MEETING VENUE STEPS FROM DOWNTOWN AND THE SEA

---

[PLAN YOUR EVENT »](#)



FOUR SEASONS

HOTEL  
BEIRUT



A man in a white shirt and blue striped tie is sitting in the driver's seat of a car, working on a laptop. The car's interior is visible, including the steering wheel and dashboard. The background shows a view of the city through the car window.

# FOSTER YOUR SENSE OF CREATIVITY AND INNOVATION WITH SPACIOUS AND EXQUISITE SEAFRONT SETTINGS

## THE BEST OF BEIRUT

In the heart of the city, at the edge of the Mediterranean Sea, Four Seasons Hotel Beirut is the perfect setting for your next meeting or event. Steps from the popular Zaitunay Bay and the chic downtown district, the Hotel is located on Professor Wafic Sinno Avenue – a stretch known for its prestigious private residences, great restaurants, cafés, art galleries, jewellers and designer boutiques. Guests can enjoy world-class shopping and explore the city's museums and attractions – then return to Four Seasons for the most impressive Beirut events.

## LEGENDARY SERVICE

Expect renowned warm Lebanese hospitality, creatively delicious cuisine and signature Four Seasons service that caters to your guests with personalized attention. Our team of experts is approachable, resourceful, attentive and deeply committed to the success of your event – with every indulgence right at your fingertips.

## BRING YOUR EVENT TO LIFE

Whether you are planning a business or social gathering, Four Seasons feels elegant and elevated, yet always comfortable, friendly and welcoming. Let us custom-craft every detail – from décor to cuisine – bringing your guests together to share in the magic of a memorable occasion.

PICTURE YOUR EVENT IN  
OUR COLLECTION OF BRIGHT  
AND AIRY EVENT SPACES,  
HOSTING 16 TO 600 GUESTS

---

CHOOSE YOUR VENUE »





GRAND BALLROOM

GRAND BALLROOM FOYER

GRAND BALLROOM TERRACE

CORNICHE ROOM / FOYER

PROMENADE ROOM

MARINA BOARDROOM

EXECUTIVE BOARDROOM

THIRD FLOOR TERRACE

## GRAND BALLROOM

With expansive windows that provide natural daylight, our first-floor Grand Ballroom is impressive by day or night. Distinguished by vaulted ceilings and lush carpets, this space offers understated elegance – ideal for meetings and flexible to customize with special décor for weddings.

The Ballroom may easily be divided in two to accommodate smaller gatherings, or to accommodate meet and feed scenarios. The foyer and outdoor terrace are ideal for mingling, with breathtaking views of the Mediterranean.

[GRAND BALLROOM DETAILS »](#)

## GRAND BALLROOM FOYER

Awash in daylight from a wall of windows overlooking the Mediterranean, this elegant foyer, with step-out access to the outdoor terrace, can complement the Grand Ballroom or be used on its own. The 233-m<sup>2</sup> (2,637-sq.-ft.) space works as beautifully for corporate coffee breaks as for receptions with panache.

[GRAND BALLROOM FOYER DETAILS »](#)

## GRAND BALLROOM TERRACE

Accent a reception – or a special part of your event – with magnificent Mediterranean Sea views from the large outdoor Grand Ballroom Terrace.

[GRAND BALLROOM TERRACE DETAILS »](#)

GRAND BALLROOM

GRAND BALLROOM FOYER

GRAND BALLROOM TERRACE

CORNICHE ROOM / FOYER

PROMENADE ROOM

MARINA BOARDROOM

EXECUTIVE BOARDROOM

THIRD FLOOR TERRACE



## CORNICHE ROOM

Designed for accessibility and comfort, the Corniche Room is conveniently located across from the elevators on the third floor, steps from the foyer and terrace. Equipped with a built-in screen and state-of-the-art audio visual technology, it can be adapted for any set-up, from a classroom for 16 to a reception of 45.

[CORNICHE ROOM DETAILS »](#)



GRAND BALLROOM

GRAND BALLROOM FOYER

GRAND BALLROOM TERRACE

CORNICHE ROOM / FOYER

PROMENADE ROOM

MARINA BOARDROOM

EXECUTIVE BOARDROOM

THIRD FLOOR TERRACE



## CORNICHE FOYER

Adjacent to the Corniche Room, this elegant, light-filled space is ideal for pre-function gatherings of up to 45. Large glass doors permit step-out access to views and seaside air on the third-floor terrace.

[CORNICHE FOYER DETAILS »](#)



GRAND BALLROOM

GRAND BALLROOM FOYER

GRAND BALLROOM TERRACE

CORNICHE ROOM / FOYER

PROMENADE ROOM

MARINA BOARDROOM

EXECUTIVE BOARDROOM

THIRD FLOOR TERRACE



## PROMENADE ROOM

Designed for an extra measure of privacy, the Promenade Room features its own integrated Promenade Parlour, allowing convenient, private access for coffee breaks or lunch set-up. Dramatic lighting options are possible in the two rooms, which can accommodate a reception of 70 or a banquet for 50.

[PROMENADE ROOM DETAILS »](#)

## MARINA BOARDROOM

The exclusive Marina Boardroom opens onto the outdoor terrace, with its sweeping views of the Mediterranean – a beautiful backdrop for private coffee breaks. Equipped with a built-in screen, this room provides the full range of set-ups, from theatre seating to banquet rounds; for groups from 16 to 40.

[MARINA ROOM DETAILS »](#)

## EXECUTIVE BOARDROOM

With its dedicated conference table and integrated private breakout parlour and restroom access, the Executive Boardroom offers privacy and convenience for board meetings or negotiations. Step out directly from the boardroom and parlour to the outdoor terrace.

[EXECUTIVE BOARDROOM DETAILS »](#)



GRAND BALLROOM

GRAND BALLROOM FOYER

GRAND BALLROOM TERRACE

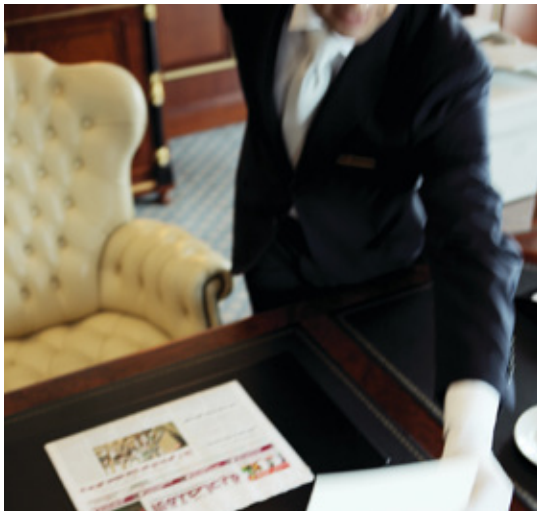
CORNICHE ROOM / FOYER

PROMENADE ROOM

MARINA BOARDROOM

EXECUTIVE BOARDROOM

THIRD FLOOR TERRACE



## THIRD FLOOR TERRACE

Enjoy the sea breezes, city lights or stars at an al fresco banquet or reception that flows easily between the terrace and foyer. The outdoor terrace offers inspiring views overlooking Zaitunay Bay.



# REVEL IN INSPIRING AND LUXURIOUS SURROUNDINGS OFFERING A MEMORABLE EXPERIENCE OF BEIRUT

.....  
[EXPLORE HOTEL AMENITIES »](#)





## EMBRACE SOOTHING LUXURY

Invite your guests to a comfortable home away from home at Four Seasons Hotel Beirut. Designed by Pierre-Yves Rochon, the 230 guest rooms, including 60 spacious suites, offer contemporary comfort and a setting that is both relaxing and highly productive. Every guest room features a private furnished terrace with sea, mountain or city views. Your guests will enjoy a great night's sleep, thanks to blackout curtains, the legendary Four Seasons bed and a variety of pillow choices. Signature marble bathrooms are stocked with an array of thoughtful amenities. And to provide total peace of mind, our round-the-clock Four Seasons team is always ready to assist - whether with the last-minute pressing of a jacket or administrative support to fine-tune a presentation.

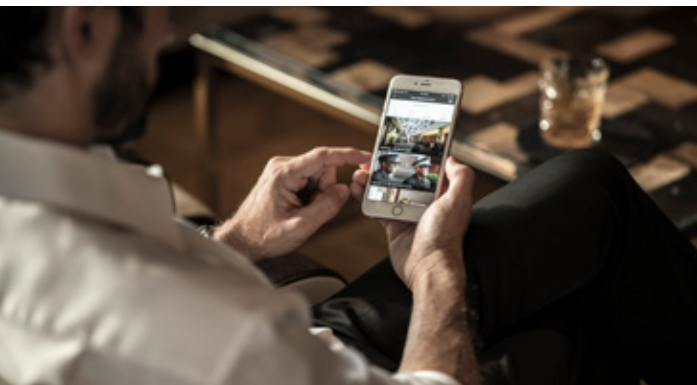


## WHERE BEIRUT COMES TO SOCIALIZE

Your guests don't need to leave Four Seasons to enjoy some of Beirut's best dining and entertainment. With six restaurants, bars and lounges, the choice is abundant. Savour succulent steaks and Mediterranean-inspired seafood cuisine at The Grill, our premium all-day dining venue. Meet for afternoon tea and coffee and enjoy a selection of gourmet food and artisan chocolate at the Lobby Lounge. Relax over signature cocktails and exquisite fusion and international dishes at

The Bar & Lounge. Gaze over the sea and city lights while dancing the night away at The Roof, the most coveted roof bar and lounge in a city that is all about glamour. Spend your evenings at Arabesque, a textbook example of a high-end shisha lounge, and sample a mouthwatering array of Lebanese food with a twist, paired with bespoke cocktails and mocktails. Or your guests might prefer some extra peace and privacy with 24-hour In-Room Dining - a Four Seasons specialty.





## SERVICES AND AMENITIES

### ROOFTOP POOL

- Tranquil oasis on the 26th floor, features terrace with wraparound views
- Sun loungers
- Chilled towels and mists
- Pool bar with light fare
- Whirlpool

### THE SPA

- Eight treatment rooms for therapies and treatments
- Includes VIP couple's suite with private whirlpool, steam and shower

### FULL-SERVICE HEALTH CLUB

- Overlooks the Mediterranean, with state-of-the-art equipment, free weights
- Men's and women's facilities, each with sauna, steam room
- Certified trainers on request

### ROOM FEATURES

- Alarm clock
- In-room safe
- Mini refrigerator on request
- Multi-line telephone(s) with voicemail
- Refrigerated private bar
- Coffee machine and tea

### BED & BATH

- Hair dryer
- Hypoallergenic bedding on request
- Down duvets
- Down pillows
- Orthopaedic pillows on request
- Silk padded hangers
- Slippers
- Thick terry bathrobes

### INTERNET ACCESS

- Wired and wireless high-speed Internet access available in all guest rooms and public areas

### SERVICES & AMENITIES

- Complimentary newspaper
- Fax machine on request
- Printer on request
- Flashlight(s) on request
- Hearing impaired kit on request
- Visually impaired kit on request
- Humidifier and air ionizer on request
- Iron and ironing board on request
- Twice-daily housekeeping service with evening ice delivery
- Valet parking services
- Concierge services
- Complimentary shoeshine service

### ENTERTAINMENT

- All-news cable network
- Cable television
- Connection for MP3 players
- DVD player
- iPod docking station
- Laptop on request
- Plasma/LCD screen television
- PlayStation on request
- Satellite television

### BUSINESS SERVICES

- 24-hour business services
- Airline reservation service
- Audiovisual equipment
- Business equipment
- Cellular telephones
- Computers
- Currency exchange service
- International newspapers
- Laptops
- Meeting and function space
- Printing services
- Video and wireless conferencing
- Worldwide courier service



## DISCOVER THE UNEXPECTED

Show off the unexpected side of Beirut and add extra energy to your event – with every detail arranged by Four Seasons. Our city's alluring history, vibrant atmosphere, Mediterranean coastline and stunning weather enable you to plan varied itineraries all year round. Enjoy water sports at Zaitunay Bay right next door, explore nearby wineries and ancient sites such as the Byblos and Baalbek ruins, or take a day trip to experience some of Lebanon's world-class outdoor options, including skiing, hiking and golfing. Four Seasons makes every Beirut discovery feel effortless.

[DISCOVER BEIRUT »](#)



Set-up Type		Capacity	Facing	
<b>GRAND BALLROOM</b>				
U-shape		120	Facing screen I or II	
U-shape		120	Facing back of house doors	
Boardroom		120		
Double U-shape		150	Facing back of house doors	
Double U-shape		240	Facing screen I or II	
Hollow Square		180		
Classroom, 2 chairs per table		400	Facing screen I or II	
Classroom, 2 chairs per table		500	Facing back of house doors	
Rounds of 10		500	With stage & dance floor	
Rounds of 10		550	Without stage & dance floor	
Theatre Style		600	Facing back of house doors	
Theatre Style		600	Facing screen I or II	
Reception		800		
Length	Width	Height	m <sup>2</sup>	
36.65	20.5	5.65	751	

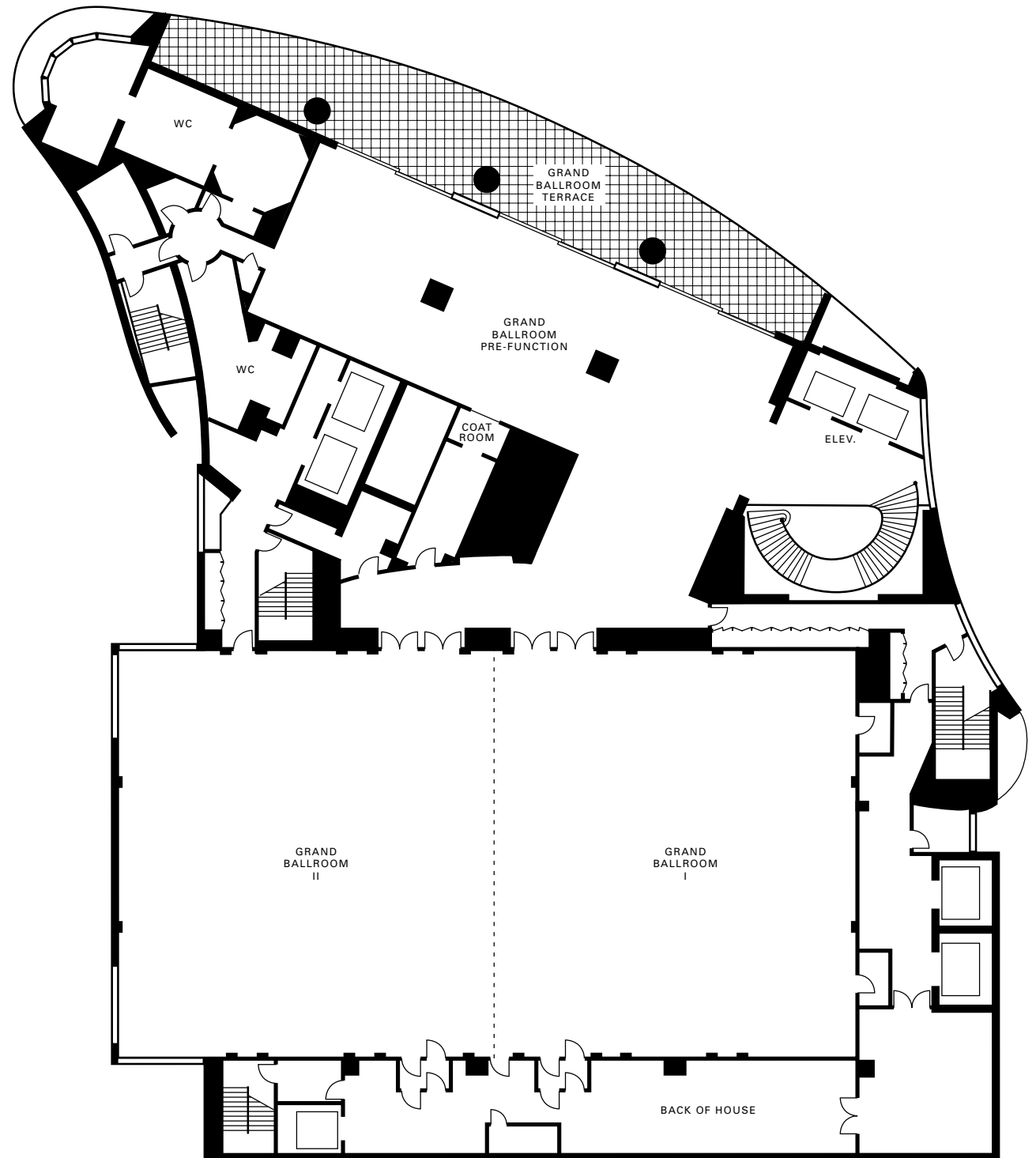
Set-up Type		Capacity	Facing	
<b>GRAND BALLROOM I</b>				
U-shape		60	Facing back of house doors	
U-shape		60	Facing screen	
Boardroom		87		
Double U-shape		90	Facing screen	
Double U-shape		90	Facing back of house doors	
Hollow Square		87		
Classroom, 2 chairs per table		210	Facing back of house doors	
Classroom, 2 chairs per table		210	Facing screen	
Rounds of 10		210	With stage & dance floor	
Rounds of 10		250	Without stage & dance floor	
Theatre Style		300	Facing back of house doors	
Theatre Style		300	Facing screen	
Reception		400		
Length	Width	Height	m <sup>2</sup>	
18.26	20.5	5.65	375	

Set-up Type		Capacity	Facing	
<b>GRAND BALLROOM II</b>				
U-shape		60	Facing back of house doors	
U-shape		60	Facing screen	
Boardroom		87		
Double U-shape		90	Facing screen	
Double U-shape		90	Facing back of house doors	
Hollow Square		87		
Classroom, 2 chairs per table		210	Facing back of house doors	
Classroom, 2 chairs per table		210	Facing screen	
Rounds of 10		230	With stage & dance floor	
Rounds of 10		250	Without stage & dance floor	
Theatre Style		300	Facing back of house doors	
Theatre Style		300	Facing screen	
Reception		400		
Length	Width	Height	m <sup>2</sup>	
18.26	20.5	5.65	375	

Set-up Type		Capacity	Facing	
<b>GRAND BALLROOM FOYER</b>				
Reception		260		
Length	Width	Height	m <sup>2</sup>	
26.5	9.25	3.5	233	

Set-up Type		Capacity	Facing	
<b>GRAND BALLROOM TERRACE</b>				
Rounds of 10		40		
Reception		180		
Length	Width	Height	m <sup>2</sup>	
35.25	5.53	2.95	155	

« BACK TO CAPACITY CHARTS



## GRAND BALLROOM

*For more information about the ballroom, visit our website by clicking on the links below:*

[Grand Ballroom »](#)

[Grand Ballroom I »](#)

[Grand Ballroom II »](#)

[Grand Ballroom Foyer »](#)

[Grand Ballroom Terrace »](#)

Set-up Type	Capacity	Facing	
<b>CORNICHE ROOM</b>			
U-shape	16	Facing the side wall	
U-shape	16	Facing screen	
Boardroom	16		
Hollow Square	21		
Classroom, 2 chairs per table	16	Facing the side wall	
Classroom, 2 chairs per table	16	Facing screen	
Rounds of 10	30		
Theatre Style	40	Facing the side wall	
Theatre Style	40	Facing screen	
Reception	45	Without stage & dance floor	
Length	Width	Height	m <sup>2</sup>
9.94	6.12	3.95	61

<b>PROMENADE ROOM</b>			
U-shape	25	Facing the side wall	
U-shape	25	Facing screen	
Boardroom	25		
Hollow Square	25		
Classroom, 2 chairs per table	35	Facing the side wall	
Classroom, 2 chairs per table	35	Facing screen	
Rounds of 10	50		
Theatre Style	60	Facing the side wall	
Theatre Style	60	Facing screen	
Reception	70	Without stage & dance floor	
Length	Width	Height	m <sup>2</sup>
11.26	8.9	3.95	100

Set-up Type	Capacity	Facing	
<b>MARINA BOARDROOM</b>			
U-shape	16	Facing screen	
Boardroom	16		
Hollow Square	20		
Classroom, 2 chairs per table	22	Facing screen	
Rounds of 10	30		
Theatre Style	40	Facing screen	
Reception	35		
Length	Width	Height	m <sup>2</sup>
8.6	6.73	3.95	58

<b>EXECUTIVE BOARDROOM</b>			
Boardroom	12		
Length	Width	Height	m <sup>2</sup>
8.5	5.9	3.95	50

<b>EXECUTIVE BOARDROOM PARLOUR</b>			
Reception	22		
Rounds	10		
Length	Width	Height	m <sup>2</sup>
8	5	3.95	40

<b>CORNICHE FOYER</b>			
Reception	48		
Length	Width	Height	m <sup>2</sup>
11	8.4	3.65	92



« BACK TO CAPACITY CHARTS

## MEETING ROOMS

*For more information about the meeting rooms, visit our website by clicking on the links below:*

[Corniche Room »](#)

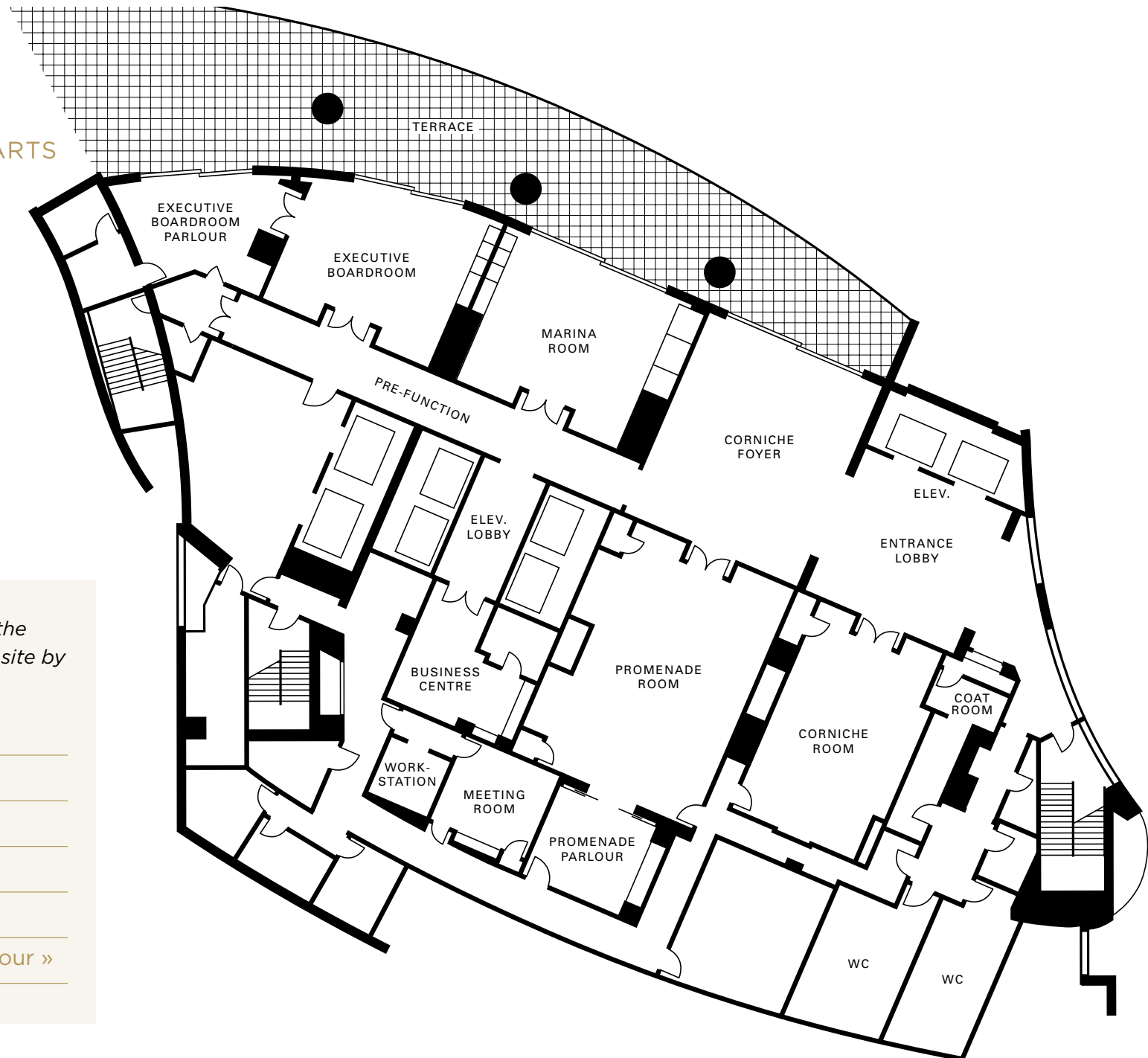
[Corniche Foyer »](#)

[Promenade Room »](#)

[Marina Room »](#)

[Executive Boardroom »](#)

[Executive Boardroom Parlour »](#)



# CONNECT WITH OUR EXPERT PLANNERS TO DISCUSS THE POSSIBILITIES FOR YOUR MEETING, SPECIAL EVENT OR WEDDING

---

FOUR SEASONS HOTEL BEIRUT  
1418 Professor Wafic Sinno Avenue  
2020 4107 Minet El Hosn, Beirut, Lebanon  
Tel. 961 (1) 761780 Fax. 961 (1) 761100

CONNECT WITH US  
[fourseasons.com/beirut](http://fourseasons.com/beirut)



NEED ANYTHING?  
LET'S CHAT.

