



THE SUITE COLLECTION >



FOUR SEASONS HOTEL
Toronto

INTRODUCTION

SUITES

GUEST ROOMS

FLOOR PLANS

IN-ROOM AMENITIES

HOTEL PROFILE

CONTACT US

[CLOSE]



Relax into a spacious suite that feels like your own chic, sophisticated home in the heart of fashionable Yorkville. The 42 suites of Four Seasons Hotel Toronto have been designed on a warm, personal scale by the internationally renowned, Toronto-based design firm, Yabu Pushelberg. Sleek, contemporary interiors feature a soothing, neutral colour palette. Floor-to-ceiling views flow from the downtown skyline to the vast canopy of trees to the north, sheltering the mansion-lined streets of Rosedale. To enhance your suite experience, thoughtful Four Seasons service is at your call around the clock.

INTRODUCTION

SUITES

Royal

Presidential

Bellair & Cumberland

Yorkville

One-Bedroom

GUEST ROOMS

FLOOR PLANS

IN-ROOM AMENITIES

HOTEL PROFILE

CONTACT US

[CLOSE]

ROYAL SUITE

ONE BEDROOM: 245 M² (2,635 SQ. FT.) / ALSO AVAILABLE WITH TWO OR THREE BEDROOMS

[VIEW SUITE DETAILS >](#)



INTRODUCTION

SUITES

Royal

Presidential

Bellair & Cumberland

Yorkville

One-Bedroom

GUEST ROOMS

FLOOR PLANS

IN-ROOM AMENITIES

HOTEL PROFILE

CONTACT US

[CLOSE]

ROYAL SUITE

[IN-ROOM AMENITIES](#) / [ROOM COMPARISON](#) / [RATES AND AVAILABILITY](#)



The largest and most prestigious suite at Four Seasons Hotel Toronto, the Royal Suite is located on the 21st floor – the Hotel’s top level. The dramatically long living and dining area presents a full wall of windows with a magnificent 180-degree view of northern Toronto, from charming Yorkville to the mansion-lined streets of Rosedale. The dining table for eight is served from a fully equipped kitchen. Two of the bedrooms include a dressing area, as well as a distinctly designed bathroom with corner windows. Of special note is the Royal Suite’s spacious private office, featuring its own direct entrance from the hallway.

[VIEW ROOM FLOOR PLAN >](#)



INTRODUCTION

SUITES

Royal

Presidential

Bellair & Cumberland

Yorkville

One-Bedroom

GUEST ROOMS

FLOOR PLANS

IN-ROOM AMENITIES

HOTEL PROFILE

CONTACT US

[CLOSE]

PRESIDENTIAL SUITE

ONE BEDROOM: 197 M² (2,120 SQ. FT.) / ALSO AVAILABLE WITH TWO OR THREE BEDROOMS

[VIEW SUITE DETAILS >](#)



Royal

Presidential

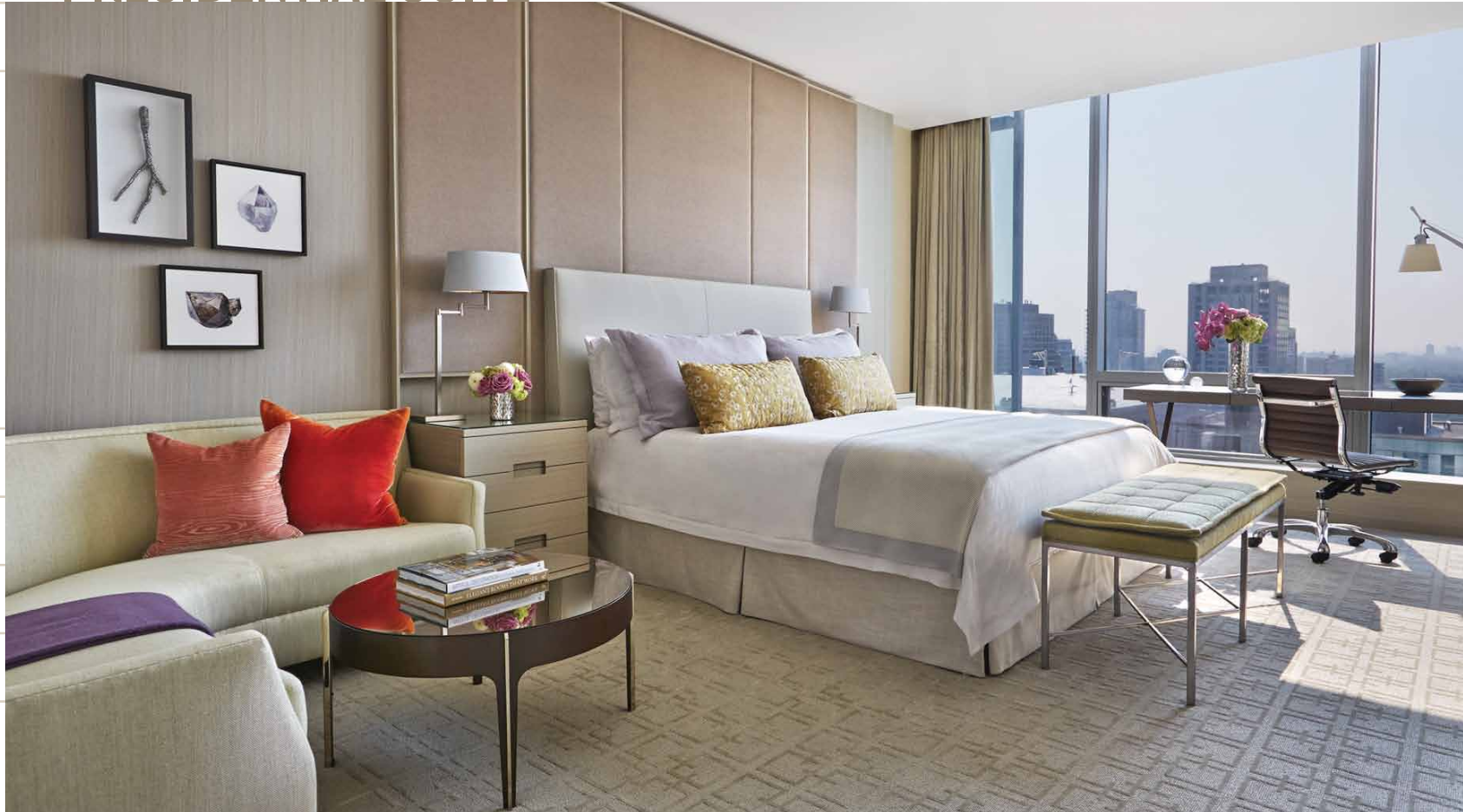
Bellair & Cumberland

Yorkville

One-Bedroom

[CLOSE]

PRESIDENTIAL SUITE



Sleek, spacious and spectacular, the Presidential Suite makes a grand impression for entertaining, informal meetings or sumptuous relaxation. Host guests in the extra-long living area with a wall of windows presenting a panorama of northern Toronto from the 20th floor. At the far end of the living area is an executive desk and at the other end is a dining table for eight, served from a complete kitchen with service entrance. Two of the bedrooms include a dressing area, as well as a distinctly designed bathroom with corner windows.

[VIEW ROOM FLOOR PLAN >](#)



BELLAIR & CUMBERLAND SUITES

ONE BEDROOM: 130 M² (1,395 SQ. FT.) / ALSO AVAILABLE WITH TWO BEDROOMS

[VIEW SUITE DETAILS >](#)

[INTRODUCTION](#)

[SUITES](#)

[Royal](#)

[Presidential](#)

[Bellair & Cumberland](#)

[Yorkville](#)

[One-Bedroom](#)

[GUEST ROOMS](#)

[FLOOR PLANS](#)

[IN-ROOM AMENITIES](#)

[HOTEL PROFILE](#)

[CONTACT US](#)

[CLOSE]



BELLAIR & CUMBERLAND SUITES

[IN-ROOM AMENITIES](#) / [ROOM COMPARISON](#) / [RATES AND AVAILABILITY](#)

[INTRODUCTION](#)

[SUITES](#)

[Royal](#)

[Presidential](#)

[Bellair & Cumberland](#)

[Yorkville](#)

[One-Bedroom](#)

[GUEST ROOMS](#)

[FLOOR PLANS](#)

[IN-ROOM AMENITIES](#)

[HOTEL PROFILE](#)

[CONTACT US](#)

[CLOSE]



With a glamorous residential atmosphere, the identically designed Bellair and Cumberland Suites provide a sense of serene exclusivity on the 19th and 18th floors. The living/dining area is perfect for entertaining up to six guests, with service from a full kitchen – especially appealing for long-term stays. The two bedrooms are well separated to provide an extra measure of peace and privacy. The master bedroom is enhanced by a large closet and dressing area with windows, and a stunning bathroom with north-west corner views.

[VIEW ROOM FLOOR PLAN >](#)



INTRODUCTION

SUITES

- Royal
- Presidential
- Bellair & Cumberland
- Yorkville**
- One-Bedroom

GUEST ROOMS

FLOOR PLANS

IN-ROOM AMENITIES

HOTEL PROFILE

CONTACT US

[CLOSE]

YORKVILLE SUITES

ONE BEDROOM: 97 M² (1,040 SQ. FT.) / SOME AVAILABLE WITH TWO BEDROOMS

[VIEW SUITE DETAILS >](#)



INTRODUCTION

SUITES

- Royal
- Presidential
- Bellair & Cumberland
- Yorkville**
- One-Bedroom

GUEST ROOMS

FLOOR PLANS

IN-ROOM AMENITIES

HOTEL PROFILE

CONTACT US

[CLOSE]

YORKVILLE SUITES

[IN-ROOM AMENITIES](#) / [ROOM COMPARISON](#) / [RATES AND AVAILABILITY](#)



Like chic city apartments, one-bedroom Yorkville Suites are spacious and airy with premier locations on the corners of the 15th to 17th floors. Floor-to-ceiling windows bathe the interiors in natural light. The oversized living area includes lounge seating, a dining table for up to six people, as well as a desk facing the windows. A powder room with shower is ideal for guests sleeping on the L-shaped pull-out sofa bed. The extra-spacious king bedroom features comfortable chairs, a TV and a generous dressing area with closet. Two doors access the deluxe granite bathroom. Some Yorkville Suites are available with two bedrooms.

[VIEW ROOM FLOOR PLAN >](#)



INTRODUCTION

SUITES

Royal

Presidential

Bellair & Cumberland

Yorkville

One-Bedroom

GUEST ROOMS

FLOOR PLANS

IN-ROOM AMENITIES

HOTEL PROFILE

CONTACT US

[CLOSE]

ONE-BEDROOM SUITES

62 M² (670 SQ. FT.) TO 67 M² (725 SQ. FT.) / SOME AVAILABLE WITH TWO BEDROOMS

[VIEW SUITE DETAILS >](#)



INTRODUCTION

SUITES

Royal

Presidential

Bellair & Cumberland

Yorkville

One-Bedroom

GUEST ROOMS

FLOOR PLANS

IN-ROOM AMENITIES

HOTEL PROFILE

CONTACT US

[CLOSE]

ONE-BEDROOM SUITES

IN-ROOM AMENITIES / ROOM COMPARISON / RATES AND AVAILABILITY



[VIEW ROOM FLOOR PLAN >](#)

Perfect as Toronto pieds-à-terre, our Corner, Deluxe Corner and Premier One-Bedroom Suites feature distinct spaces for living and sleeping – allowing maximum comfort and privacy for casual business meetings or entertaining friends. The king bedroom features its own sitting area and TV. The deluxe master bathroom is enhanced by a powder room with shower – ideal for guests sleeping on the L-shaped pull-out sofa bed. Some suites are available with two bedrooms.



INTRODUCTION

SUITES

GUEST ROOMS

FLOOR PLANS

IN-ROOM AMENITIES

HOTEL PROFILE

CONTACT US

[CLOSE]

GUEST ROOMS

46.5 TO 48 M² (500 TO 515 SQ. FT.)

[VIEW SUITE DETAILS >](#)



GUEST ROOMS

[IN-ROOM AMENITIES](#) / [ROOM COMPARISON](#) / [RATES AND AVAILABILITY](#)

[INTRODUCTION](#)

[SUITES](#)

[GUEST ROOMS](#)

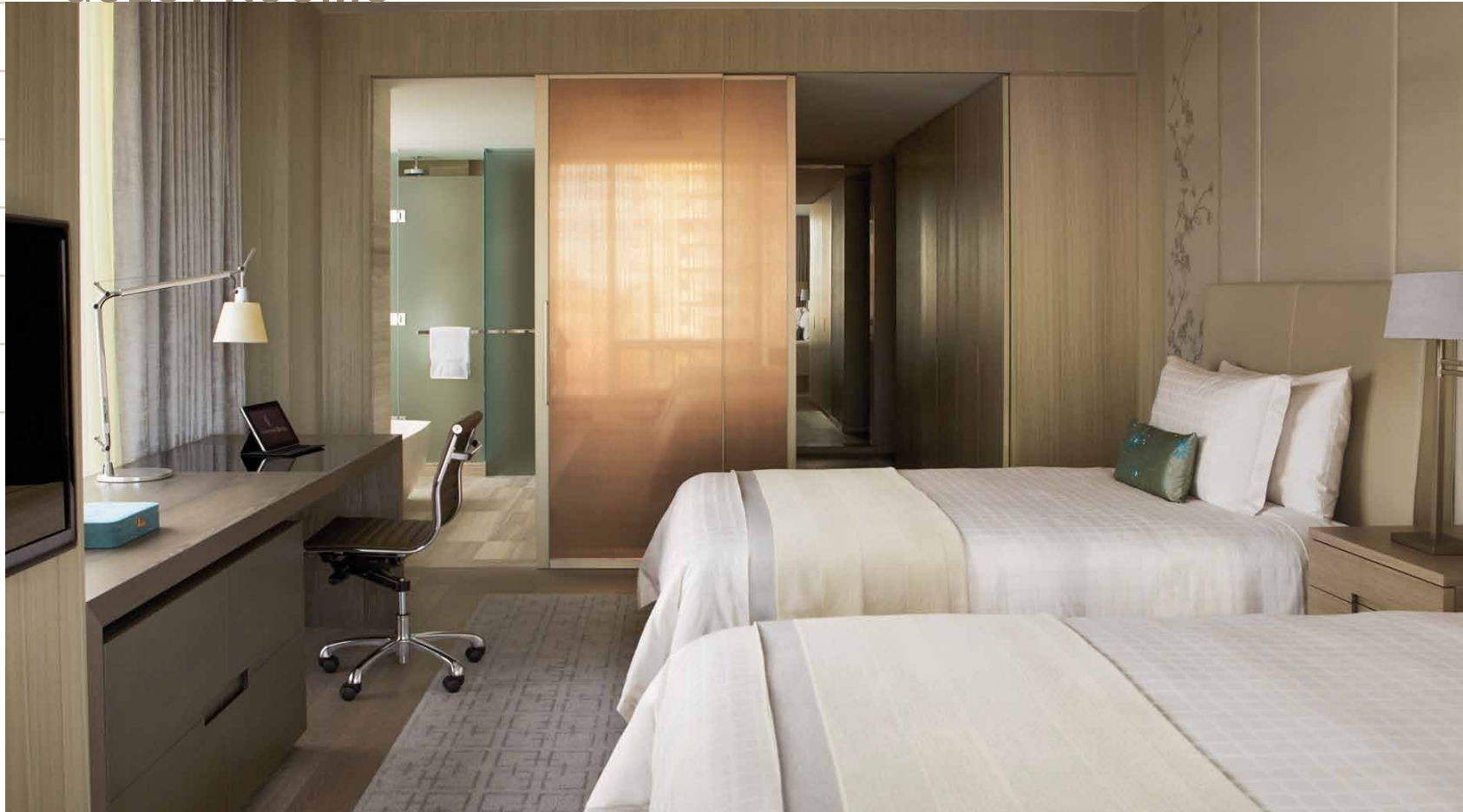
[FLOOR PLANS](#)

[IN-ROOM AMENITIES](#)

[HOTEL PROFILE](#)

[CONTACT US](#)

[CLOSE]



[VIEW ROOM FLOOR PLAN >](#)

A welcoming retreat after a long day of business or sightseeing, our Superior, Deluxe and Premier Guest Rooms are generously spacious and comfortable. The smartly combined living and sleeping area includes a large writing desk and a sitting area with a crescent-shaped sofa or two chairs. Floor-to-ceiling windows frame the cityscape and allow plenty of natural light. The granite bathroom features a fast-filling soaking tub, a separate glass-enclosed shower, and a television hidden behind the mirror.



INTRODUCTION

SUITES

GUEST ROOMS

FLOOR PLANS

Royal Suite

Presidential Suite

Bellair Suite & Cumberland Suite

Yorkville Suite

One-Bedroom Suite

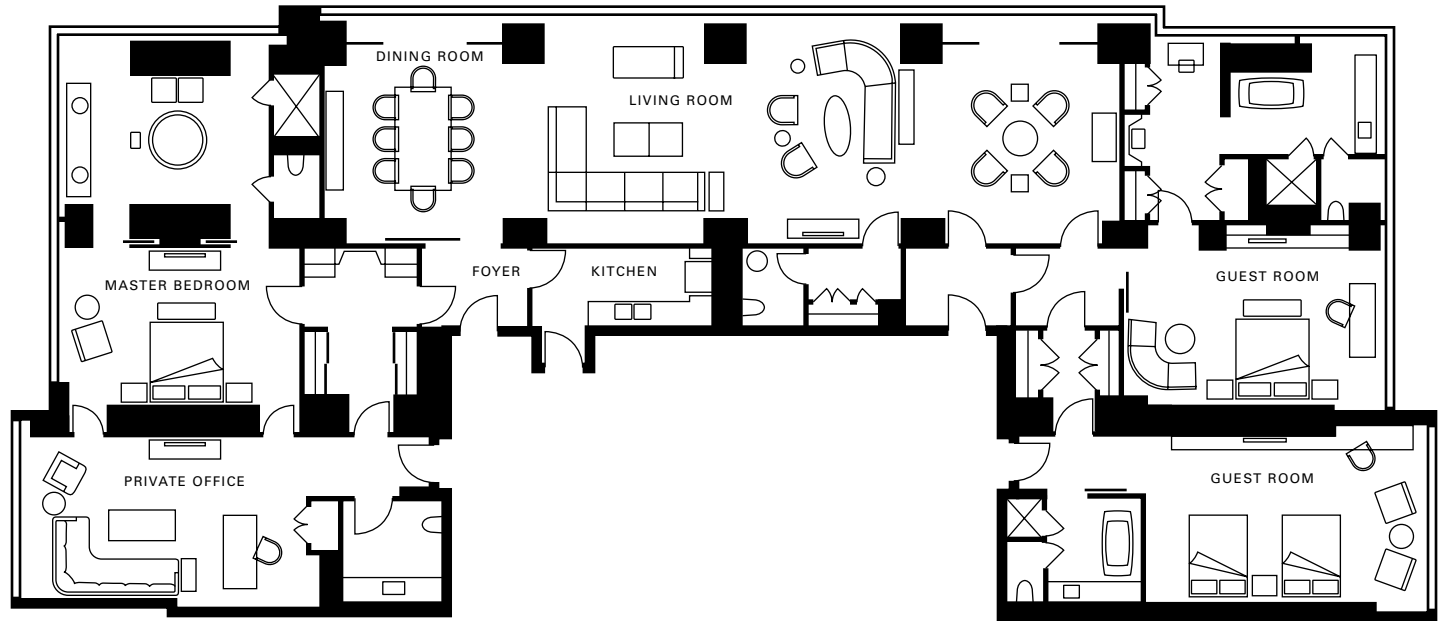
Guest Room

IN-ROOM AMENITIES

HOTEL PROFILE

CONTACT US

[CLOSE]



SUITE CATEGORY	ROYAL SUITE	LIVING / DINING AREA	<ul style="list-style-type: none"> • Large, elegant living space with three sitting areas • Plasma HDTV with DVD player and Bose stereo system • Dining table for eight guests • Large, fully equipped kitchen with Miele refrigerator and dishwasher, AEG stove and Jura Espresso machine; equipped with separate service entrance • Private bar
SIZE	<ul style="list-style-type: none"> • One-bedroom: 245 m² (2,635 sq. ft.) • Two-bedroom: 307 m² (3,305 sq. ft.) • Three-bedroom: 355 m² (3,820 sq. ft.) 	MASTER BEDROOM	<ul style="list-style-type: none"> • Spacious king bedroom with plasma HDTV • Oversized bathroom with unique features including corner windows, a double vanity and a freestanding egg-shaped tub • Walk-in closet/dressing area • Connection to the private office
NUMBER OF SUITES	1	PRIVATE OFFICE	<ul style="list-style-type: none"> • Separate entrance and powder room • Comfortable writing desk with chair • Den-like lounge seating with plasma HDTV
LOCATION	21st floor	HIGHLIGHTS	<ul style="list-style-type: none"> • Windows that open for fresh air • High-speed Internet access • In-room iPad to access Four Seasons services
VIEW	Corner city views to the north, west and east		
OCCUPANCY	<ul style="list-style-type: none"> • One-bedroom: 2 adults, or 2 adults and 1 child • Two-bedroom: 4 adults, or 2 adults and 2 children • Three-bedroom: 6 adults, or 4 adults and 4 children 		
BEDS	<ul style="list-style-type: none"> • One-bedroom: One king bed • Two-bedroom: Two king beds • Three-bedroom: Two king beds and two double beds 		
BATHROOMS	<ul style="list-style-type: none"> • Three full granite bathrooms with fast-filling, deep soaking tub, separate glass-enclosed shower, and a television hidden behind the mirror • Two guest powder rooms 		



INTRODUCTION

SUITES

GUEST ROOMS

FLOOR PLANS

Royal Suite

Presidential Suite

Bellair Suite &
Cumberland Suite

Yorkville Suite

One-Bedroom Suite

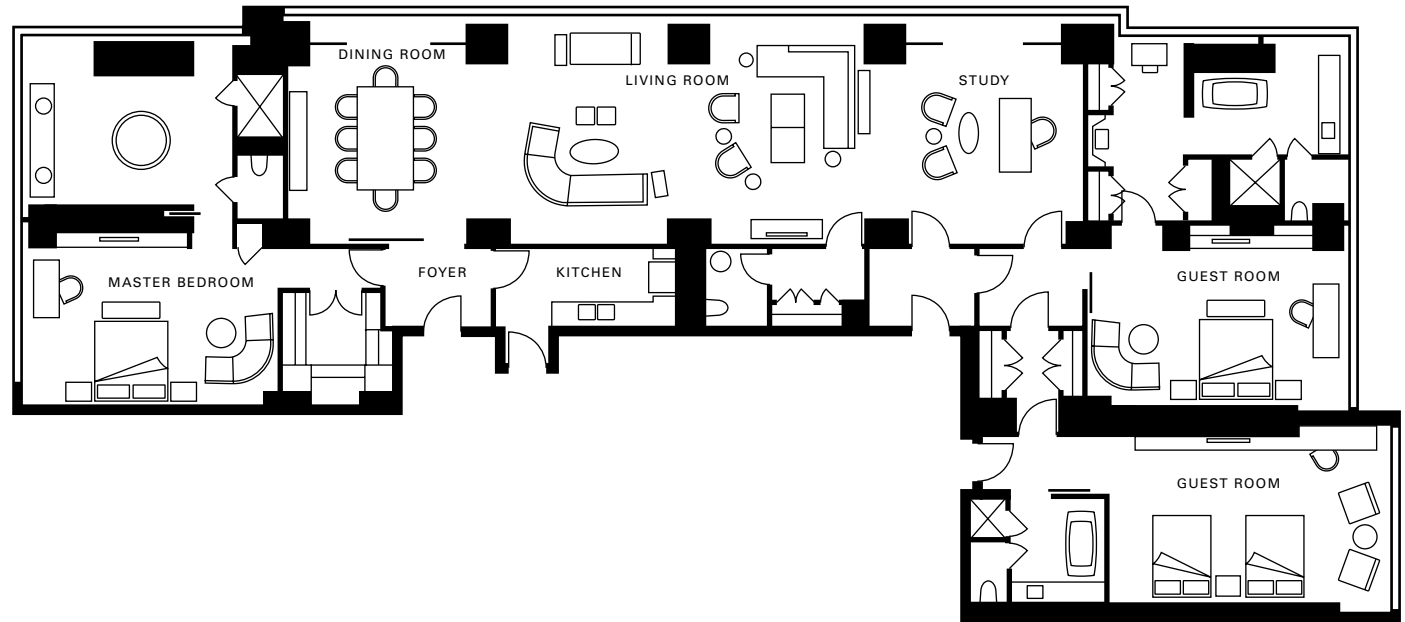
Guest Room

IN-ROOM AMENITIES

HOTEL PROFILE

CONTACT US

[CLOSE]



SUITE CATEGORY	PRESIDENTIAL SUITE	LIVING / DINING AREA	<ul style="list-style-type: none">• Large, elegant living space with two sitting areas• Plasma HDTV with DVD player and Bose stereo system• Executive desk and comfortable chairs• Dining table for eight guests• Large, fully equipped kitchen with Miele refrigerator and dishwasher, AEG stove and Jura Espresso machine; equipped with separate service entrance
SIZE	<ul style="list-style-type: none">• One-bedroom: 197 m² (2,120 sq. ft.)• Two-bedroom: 259 m² (2,790 sq. ft.)• Three-bedroom: 307 m² (3,305 sq. ft.)	MASTER BEDROOM	<ul style="list-style-type: none">• Spacious king bedroom with plasma HDTV, lounge seating and desk• Oversized bathroom with unique features including corner windows, a double vanity and a freestanding egg-shaped tub• Walk-in closet/dressing area• Private bar
NUMBER OF SUITES	1	HIGHLIGHTS:	<ul style="list-style-type: none">• Windows that open for fresh air• Super-deluxe Jura espresso machine• High-speed Internet access• In-room iPad to access Four Seasons services
LOCATION	20th floor		
VIEW	Corner city views to the north, west and east		
OCCUPANCY	<ul style="list-style-type: none">• One-bedroom: 2 adults, or 2 adults and 1 child• Two-bedroom: 4 adults, or 2 adults and 2 children• Three-bedroom: 6 adults, or 4 adults and 4 children		
BEDS	<ul style="list-style-type: none">• One-bedroom: One king bed• Two-bedroom: Two king beds• Three-bedroom: Two king beds and two double beds		
BATHROOMS	<ul style="list-style-type: none">• Three full granite bathrooms with fast-filling, deep soaking tub, separate glass-enclosed shower, and a television hidden behind the mirror• Guest powder room		



INTRODUCTION

SUITES

GUEST ROOMS

FLOOR PLANS

Royal Suite

Presidential Suite

**Bellair Suite &
Cumberland Suite**

Yorkville Suite

One-Bedroom Suite

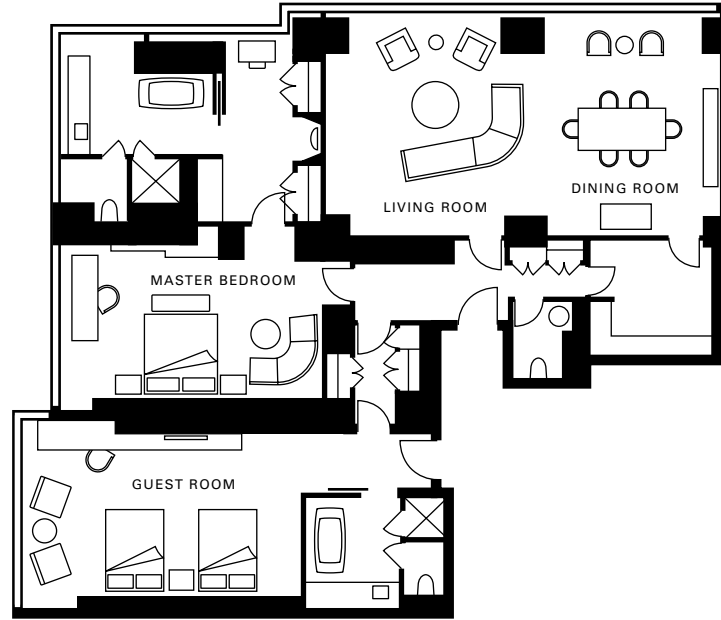
Guest Room

IN-ROOM AMENITIES

HOTEL PROFILE

CONTACT US

[CLOSE]



SUITE CATEGORY	BELLAIR SUITE & CUMBERLAND SUITE	LIVING / DINING AREA	<ul style="list-style-type: none">• Comfortable crescent-shaped sofa for TV viewing and enjoying the Bose stereo• Dining table for six• Large, fully equipped kitchen with Miele refrigerator and dishwasher, AEG stove and Jura Espresso machine
SIZE	<ul style="list-style-type: none">• One-bedroom: 130 m² (1,395 sq. ft.)• Two-bedroom: 177 m² (1,910 sq. ft.)	BEDROOMS:	<ul style="list-style-type: none">• Each bedroom features a large writing desk• Second bedroom features a walk-in closet• Master bedroom with oversized closet and dressing area with windows• Master bathroom with corner windows and a window in the WC
NUMBER OF SUITES	1 of each type	HIGHLIGHTS:	<ul style="list-style-type: none">• Windows that open for fresh air• Super-deluxe Jura espresso machine• High-speed Internet access• In-room iPad to access Four Seasons services
LOCATION	<ul style="list-style-type: none">• Bellair on 19th floor• Cumberland on 18th floor		
VIEW	Corner city views to the north and west		
OCCUPANCY	<ul style="list-style-type: none">• One-bedroom: 2 adults, or 2 adults and 1 child in a crib• Two-bedroom: 4 adults, or 2 adults and 2 children		
BEDS	<ul style="list-style-type: none">• One-bedroom: One king bed• Two-bedroom: One king bed and two double beds• One crib (by request)		
BATHROOMS	<ul style="list-style-type: none">• Two full granite bathrooms with fast-filling, deep soaking tub, separate glass-enclosed shower, and a television hidden behind the mirror• Guest powder room		



INTRODUCTION

SUITES

GUEST ROOMS

FLOOR PLANS

Royal Suite

Presidential Suite

Bellair Suite & Cumberland Suite

Yorkville Suite

One-Bedroom Suite

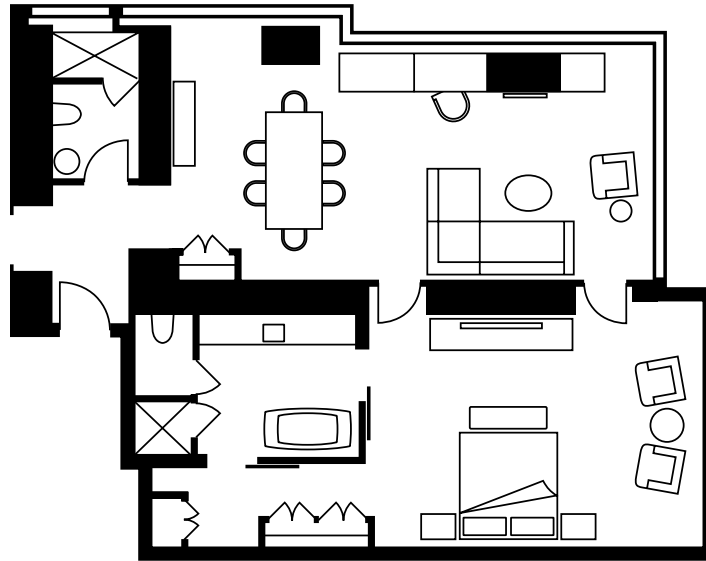
Guest Room

IN-ROOM AMENITIES

HOTEL PROFILE

CONTACT US

[CLOSE]



SUITE CATEGORY	YORKVILLE SUITE	LIVING / DINING AREA	<ul style="list-style-type: none"> • Comfortable sofa for TV viewing and enjoying the Bang & Olufsen stereo • Desk directly facing the windows • Dining table for six
SIZE	<ul style="list-style-type: none"> • One-bedroom: 97 m² (1,040 sq. ft.) • Two-bedroom: 145 m² (1,555 sq. ft.) Some Yorkville Suites may offer two bedrooms by connecting to an additional guest room with one king bed or two double beds	BEDROOMS:	<ul style="list-style-type: none"> • Comfortable sitting area with TV • Dressing area with abundant closet space • Two doors from the living room to bedroom increase the natural light and extend the views from both rooms
NUMBER OF SUITES	6	HIGHLIGHTS:	<ul style="list-style-type: none"> • Windows that open for fresh air • Deluxe Nespresso machine and tea maker • In-room iPad to access Four Seasons services
LOCATION	15th to 17th floors		
VIEW	Corner city views to the east, west and south		
OCCUPANCY	<ul style="list-style-type: none"> • One-bedroom: 3 adults, or 2 adults and 2 children • Two-bedroom: 5 adults, or 4 adults and 2 children 		
BEDS	<ul style="list-style-type: none"> • One-bedroom: One king bed with sofabed • Two-bedroom: Two king beds with sofabed 		
BATHROOMS	<ul style="list-style-type: none"> • One full granite bathroom with a fast-filling, deep soaking tub, a separate glass-enclosed shower, and a television hidden behind the mirror • Guest powder room with shower 		

INTRODUCTION

SUITES

GUEST ROOMS

FLOOR PLANS

Royal Suite

Presidential Suite

Bellair Suite &
Cumberland Suite

Yorkville Suite

One-Bedroom Suite

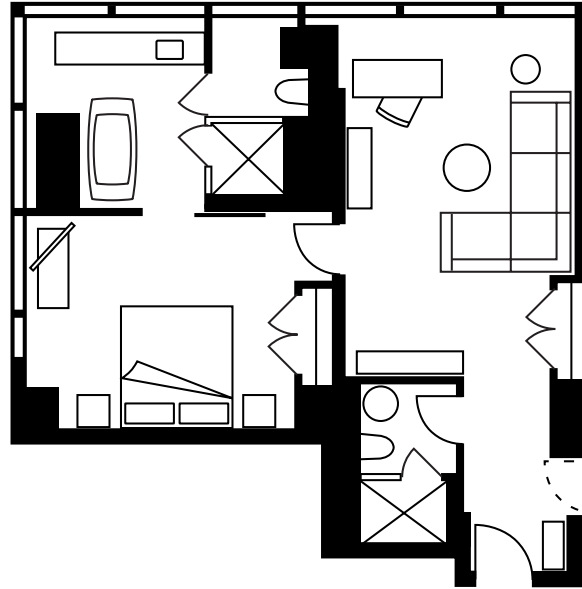
Guest Room

IN-ROOM AMENITIES

HOTEL PROFILE

CONTACT US

[CLOSE]



SUITE CATEGORY	ONE-BEDROOM SUITE	BATHROOMS	<ul style="list-style-type: none">• One full granite bathroom with a fast-filling, deep soaking tub, a separate glass-enclosed shower, and a television hidden behind the mirror• Guest powder room with shower
SIZE	<ul style="list-style-type: none">• One-bedroom: 62 m² (670 sq. ft.) to 67 m² (725 sq. ft.)• Two-bedroom: 109 m² (1,170 sq. ft.) Deluxe and Deluxe Corner One-Bedroom Suites may be connected to an additional guest room with one king bed or two double beds	HIGHLIGHTS:	<ul style="list-style-type: none">• Desk directly facing the view• Windows that open for fresh air• Abundant closet space• Espresso machine and tea maker• High-speed Internet access• In-room iPad to access Four Seasons services
NUMBER OF SUITES	32		
LOCATION	10th to 19th floors		
VIEW	North-east and north-west city views		
OCCUPANCY	<ul style="list-style-type: none">• One-bedroom: 3 adults, or 2 adults and 2 children• Two-bedroom: 6 adults, or 4 adults and 2 children		
BEDS	<ul style="list-style-type: none">• One-bedroom: One king bed and one sofa bed• Two-bedroom: Two king beds and one sofa bed; or one king, two doubles and one sofa bed• One crib (by request)		

INTRODUCTION

SUITES

GUEST ROOMS

FLOOR PLANS

Royal Suite

Presidential Suite

Bellair Suite &
Cumberland Suite

Yorkville Suite

One-Bedroom Suite

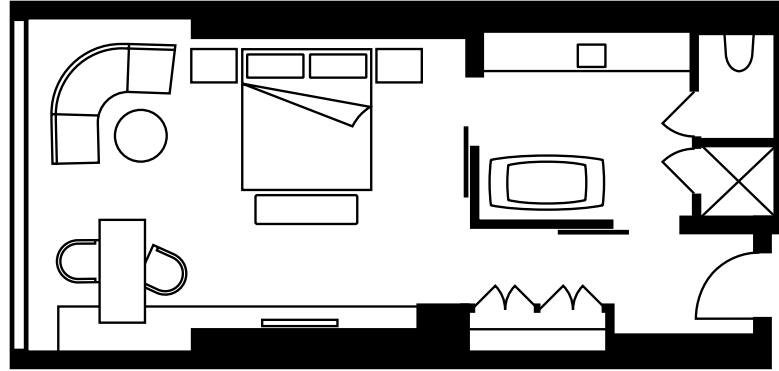
Guest Room

IN-ROOM AMENITIES

HOTEL PROFILE

CONTACT US

[CLOSE]



SUITE CATEGORY	GUEST ROOM	BATHROOMS	• One full granite bathroom with a fast-filling, deep soaking tub, a separate glass-enclosed shower, and a television hidden behind the mirror
SIZE	46.5 to 48 m ² (500 to 515 sq. ft.)	HIGHLIGHTS:	• Sitting area • Writing desk with two chairs • Windows that open for fresh air • Abundant closet space • Espresso machine and tea maker • In-room iPad to access Four Seasons services
NUMBER OF SUITES	217		
LOCATION	4th to 21st floors		
VIEW	West and east city views; some overlook the fountain and garden		
OCCUPANCY	• King bed: 2 adults, or 2 adults and 1 child • Two double beds: 3 adults, or 2 adults and 2 children		
BEDS	• One king bed or two double beds • One crib (by request)		

INTRODUCTION

SUITES

GUEST ROOMS

FLOOR PLANS

IN-ROOM AMENITIES

HOTEL PROFILE

CONTACT US

[CLOSE]



IN-ROOM AMENITIES

BED & BATH

- Signature Four Seasons beds
- Down duvets and pillows
- Hypoallergenic pillows on request
- Hair dryer
- Make-up mirror
- Thick terry bathrobes

TECHNOLOGY

- Wired high-speed Internet access
- Wireless high-speed Internet access
- Convenient desk-side charging station for electronic devices

- In-room iPad to access Four Seasons services

- iPod docking station/clock radio
- Multi-line telephone(s) with voicemail
- Fax machine on request
- High-definition televisions

ROOM FEATURES

- Complimentary daily newspaper
- In-room safe (large enough for laptops 15 in/38 cm in width)
- Refrigerated private bar
- Espresso machine and tea maker

GUEST SERVICES

- Express check-in/check-out
- 24-hour In-Room Dining
- Complimentary overnight shoeshine
- Twice-daily housekeeping, including evening turndown
- Expert, multilingual concierge team, available 24 hours a day

INTRODUCTION

SUITES

GUEST ROOMS

FLOOR PLANS

IN-ROOM AMENITIES

HOTEL PROFILE

Neighbourhood

Dining

Spa & Fitness

Concierge

CONTACT US

[CLOSE]



Make your home away from home at Four Seasons Hotel Toronto, located on the first 21 floors of a 55-storey glass tower. Sleek, contemporary comfort fills the 259 sunlit guest rooms – including the 42 spacious luxury suites. The location is in the heart of Yorkville, downtown Toronto’s most glamorous neighbourhood for shopping and dining.

NEIGHBOURHOOD

INTRODUCTION

SUITES

GUEST ROOMS

FLOOR PLANS

IN-ROOM AMENITIES

HOTEL PROFILE

Neighbourhood

Dining

Spa & Fitness

Concierge

CONTACT US

[CLOSE]



In the city's most desirable location, Four Seasons Hotel Toronto soars at the corner of Yorkville Avenue and Bay Street. Enjoy the walkable village charm of the Yorkville neighbourhood – steps from stylish Bloor Street with all its designer shops, restaurants, galleries and world-class museums. It's just a 10-minute drive to the financial and entertainment districts.



DINING

INTRODUCTION

SUITES

GUEST ROOMS

FLOOR PLANS

IN-ROOM AMENITIES

HOTEL PROFILE

Neighbourhood

Dining

Spa & Fitness

Concierge

CONTACT US

[CLOSE]



[LEARN MORE ABOUT DINING >](#)

Savour the modern French cuisine of Michelin-starred chef Daniel Boulud at Four Seasons Hotel Toronto. Upstairs at Café Boulud, meet for power breakfasts and elegant dining in a comfortable setting overlooking the Yorkville streetscape. At dbar, enjoy lunch, cocktails and casual fare, enhanced by spectacular floor-to-ceiling windows and a spacious seasonal terrace. To dine in the comfort and privacy of your suite, simply request 24-hour In-Room Dining.



SPA & FITNESS

INTRODUCTION

SUITES

GUEST ROOMS

FLOOR PLANS

IN-ROOM AMENITIES

HOTEL PROFILE

Neighbourhood

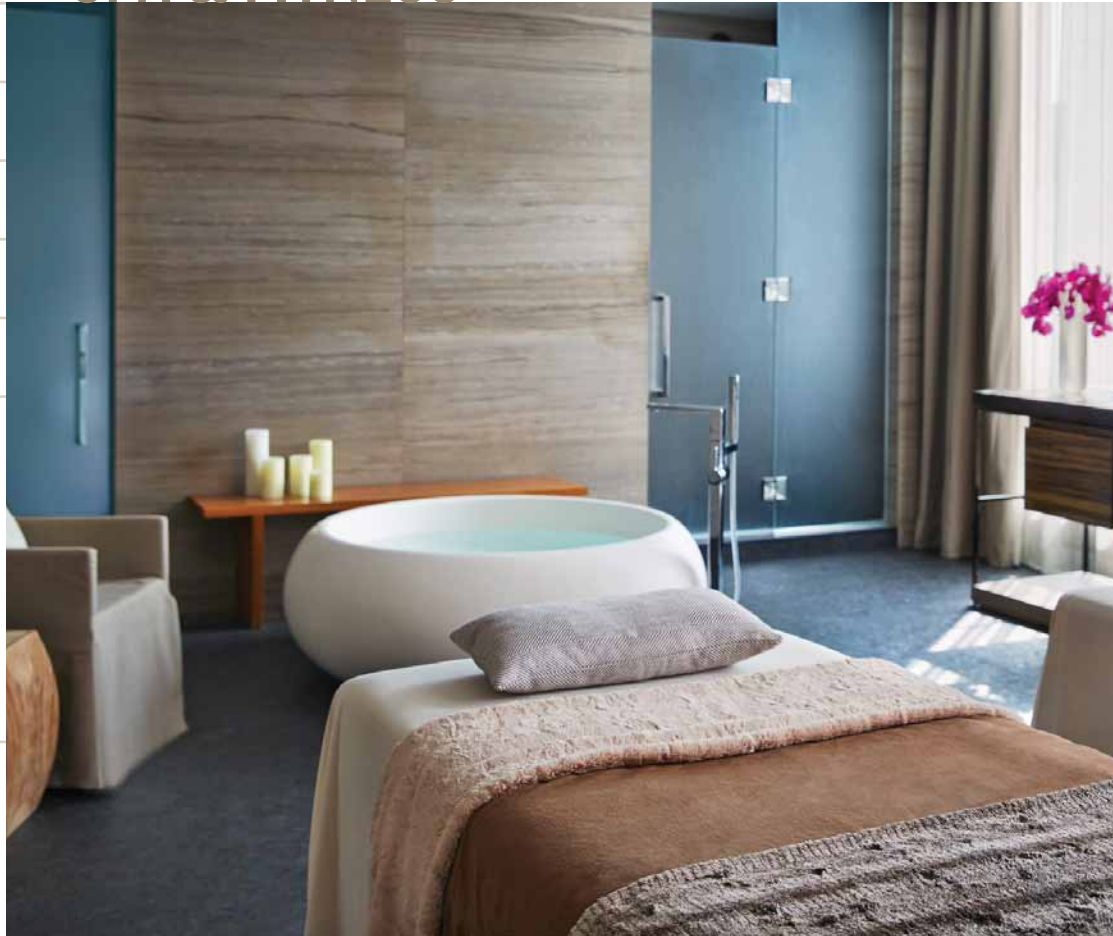
Dining

Spa & Fitness

Concierge

CONTACT US

[CLOSE]



[LEARN MORE ABOUT SPA >](#)

Experience the largest Four Seasons hotel spa in the world. This tranquil oasis in the sky encompasses 2,787 square metres (30,000 square feet), covering the entire ninth floor and featuring 17 treatment rooms. Go for a dip in the indoor pool – with adjacent whirlpool – and warm up in the sun on the indoor/outdoor relaxation deck. Work out in the state-of-the-art fitness centre and the sunny yoga studio. Then discover the artistry of the hair and nail bar. You'll look and feel spectacular.



CONCIERGE

INTRODUCTION

SUITES

GUEST ROOMS

FLOOR PLANS

IN-ROOM AMENITIES

HOTEL PROFILE

Neighbourhood

Dining

Spa & Fitness

Concierge

CONTACT US

[CLOSE]



The Four Seasons concierge team knows all the best of Toronto – and has the connections to make almost anything possible. Whatever your interest – food, fashion, history, sports, art, family activities – the Concierge can orchestrate a perfectly personalised adventure. With Four Seasons, you can count on an unforgettable time in Toronto.



INTRODUCTION

SUITES

GUEST ROOMS

FLOOR PLANS

IN-ROOM AMENITIES

HOTEL PROFILE

CONTACT US

[CLOSE]



CONTACT US

To book your suite stay, or if you have any questions, please contact us:

FOUR SEASONS HOTEL TORONTO

60 Yorkville Avenue

Toronto, Ontario, Canada M4W 0A4

Tel. 416-964-0411 / Fax. 416-964-2301

Email. reservations.toronto@fourseasons.com

Connect with us

fourseasons.com/toronto

